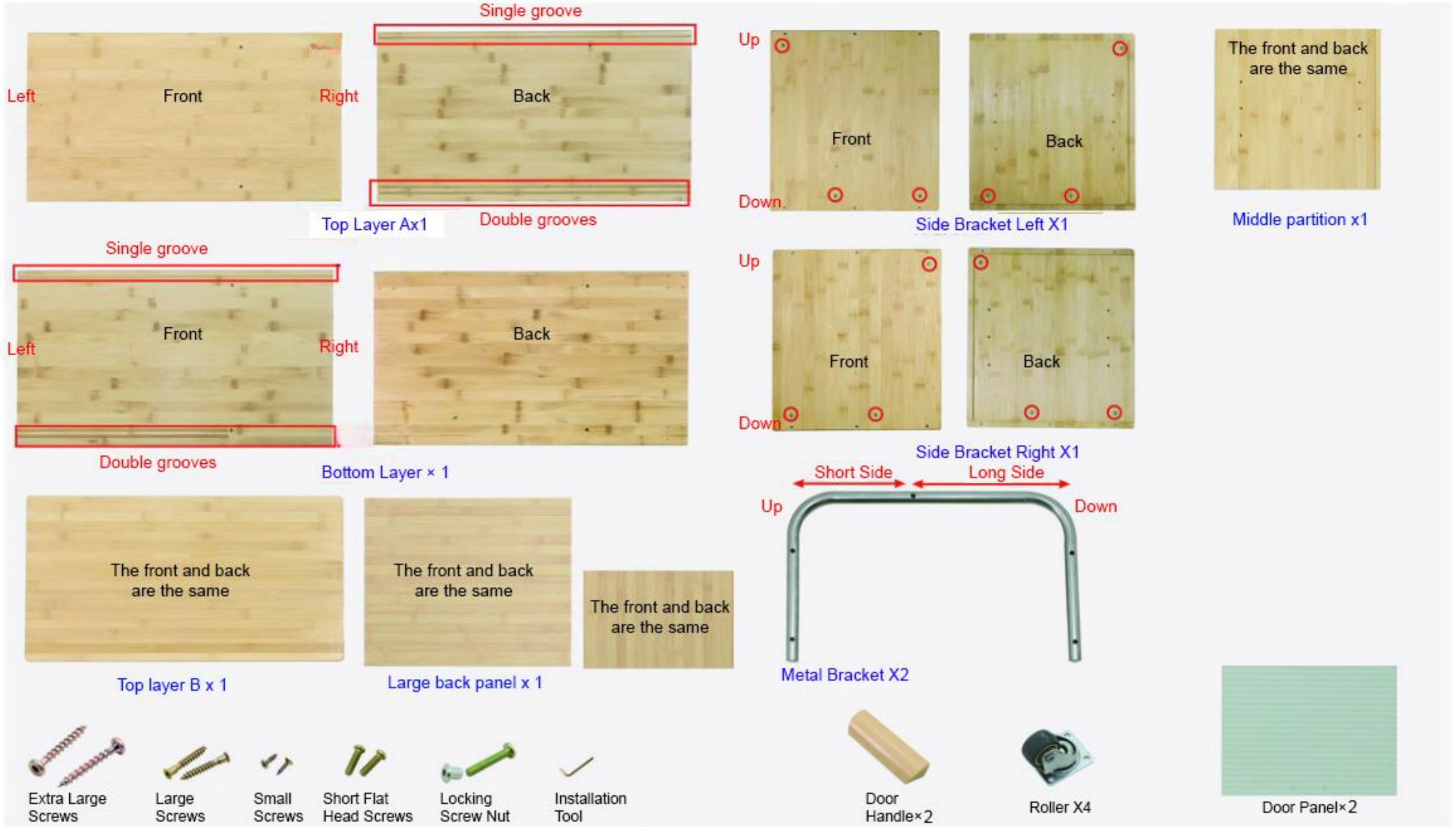


# EDB018 Installation Instruction

Please be sure to use a manual screwdriver and refrain from using an electric drill.



## Accessories List

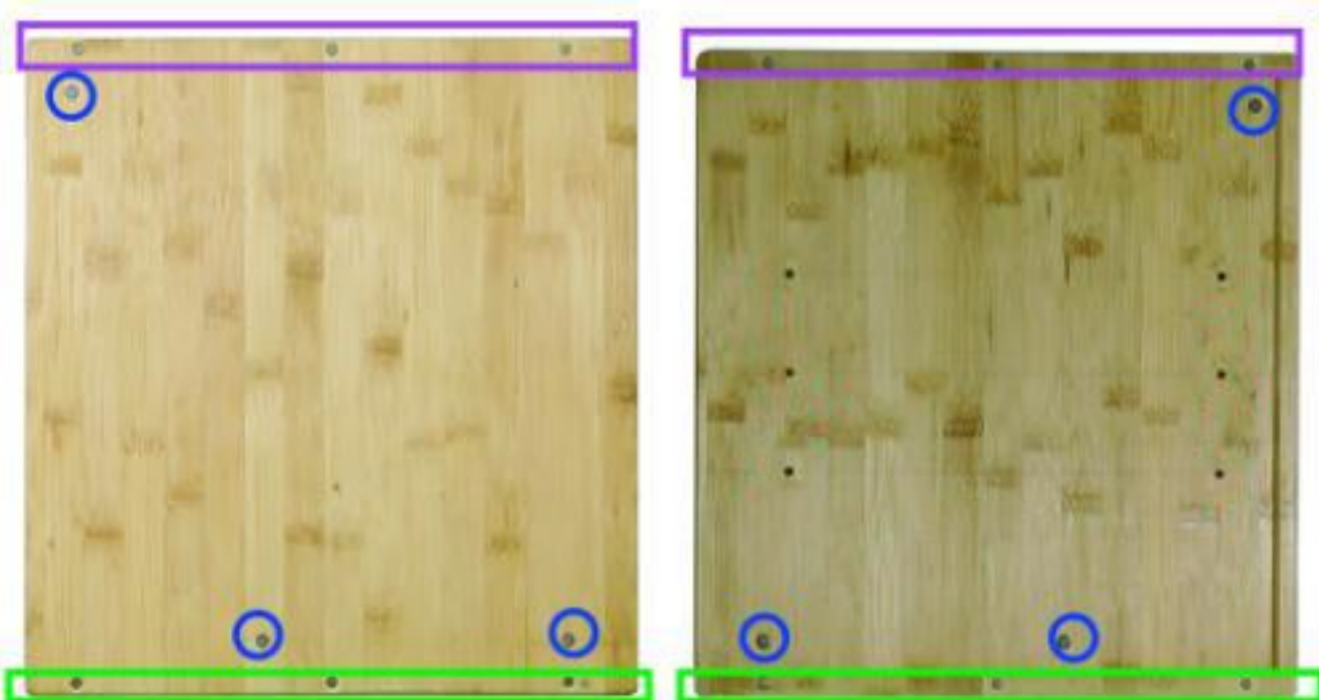


## Layer Hole Position



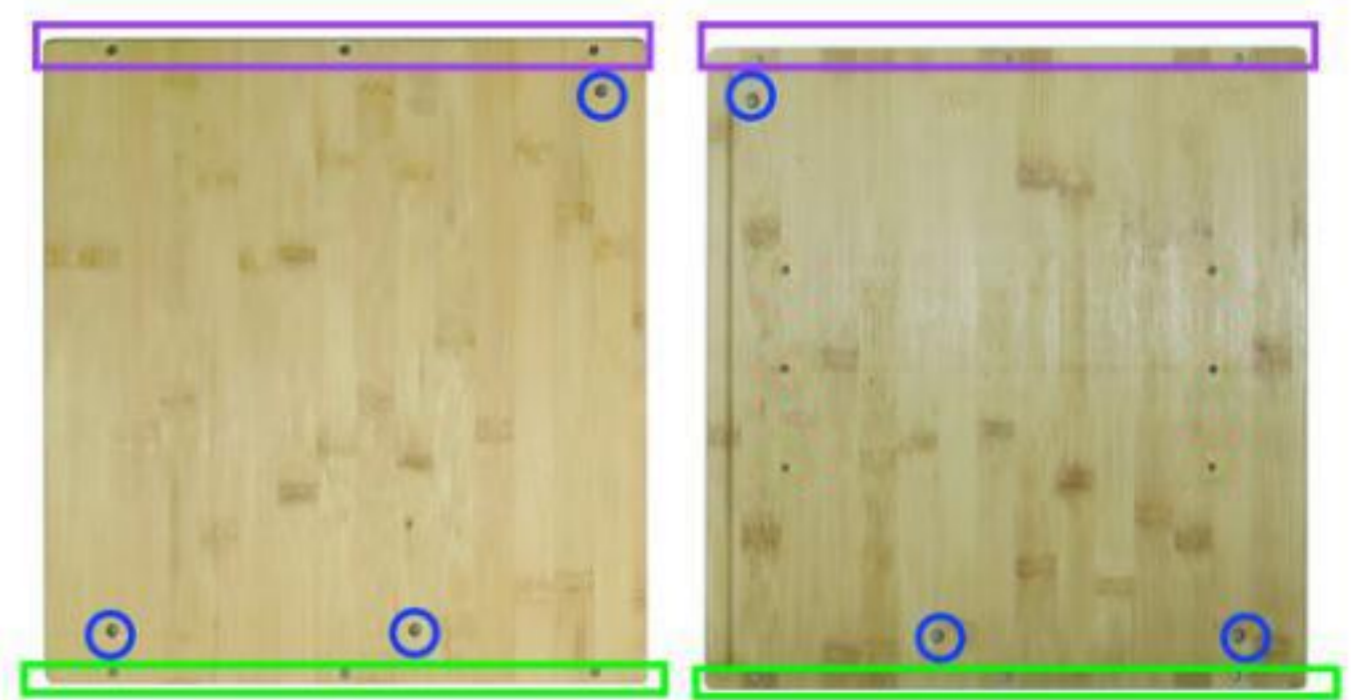
Back Of Bottom Shelf

The Yellow Circle is for Installing the Roller



Side bracket left front

Side bracket left back



Side bracket right front

Side bracket right back

- The blue circle is for installing the metal bracket
- The green circle is used to fix the bottom layer
- The purple circle is for fixing with the top layer A

- The blue circle is for installing the metal bracket
- The green circle is used to fix the bottom layer
- The purple circle is for fixing with the top layer A

# Installation steps



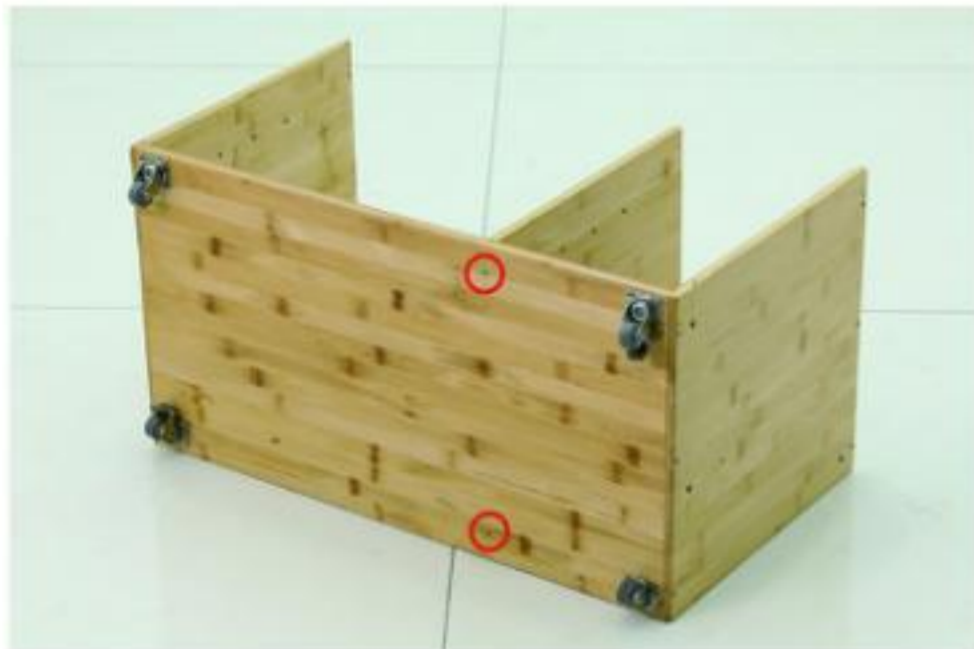
1. Take out the bottom plate and roller and install the roller on the back of the bottom plate with small screws.



2. Take out the side bracket and fix it from the left side of the bottom plate with a large screw. **Note that the groove of the side bracket is aligned with the single groove of the bottom plate.**



3. Take out the side bracket and install it from the right side of the bottom plate with a large screw. **Note that the groove of the side bracket is aligned with the single groove of the bottom plate.**



4. Take out the middle partition and screw in the large screws from the back of the bottom layer to install it. **Note that the partition groove and the bottom layer single groove are aligned.**



5. Take out the small back panel and insert it along the groove



6. Take out the large back panel and insert it along the groove



7. Take out the top layer A and install it with large screws. **Do not tighten the screws at the marked position yet.**



8. Take out the door panel and door handle and install them with short flat head screws



9. Take out the installed door panel and insert it into the double recess of the top layer A and the bottom layer. **Note that the inside and outside of the slots should correspond to each other.**



10. Insert another door panel in the same way



11. Take out the large screw and tighten it at the marked position



12. Take out the metal bracket and install it with the locking screws and nuts. **Pay attention to distinguish the upper and lower parts of the metal bracket. When installing the locking screws, hold one side and then tighten the other side.**



13. Take out the top layer B and install it with extra large screws