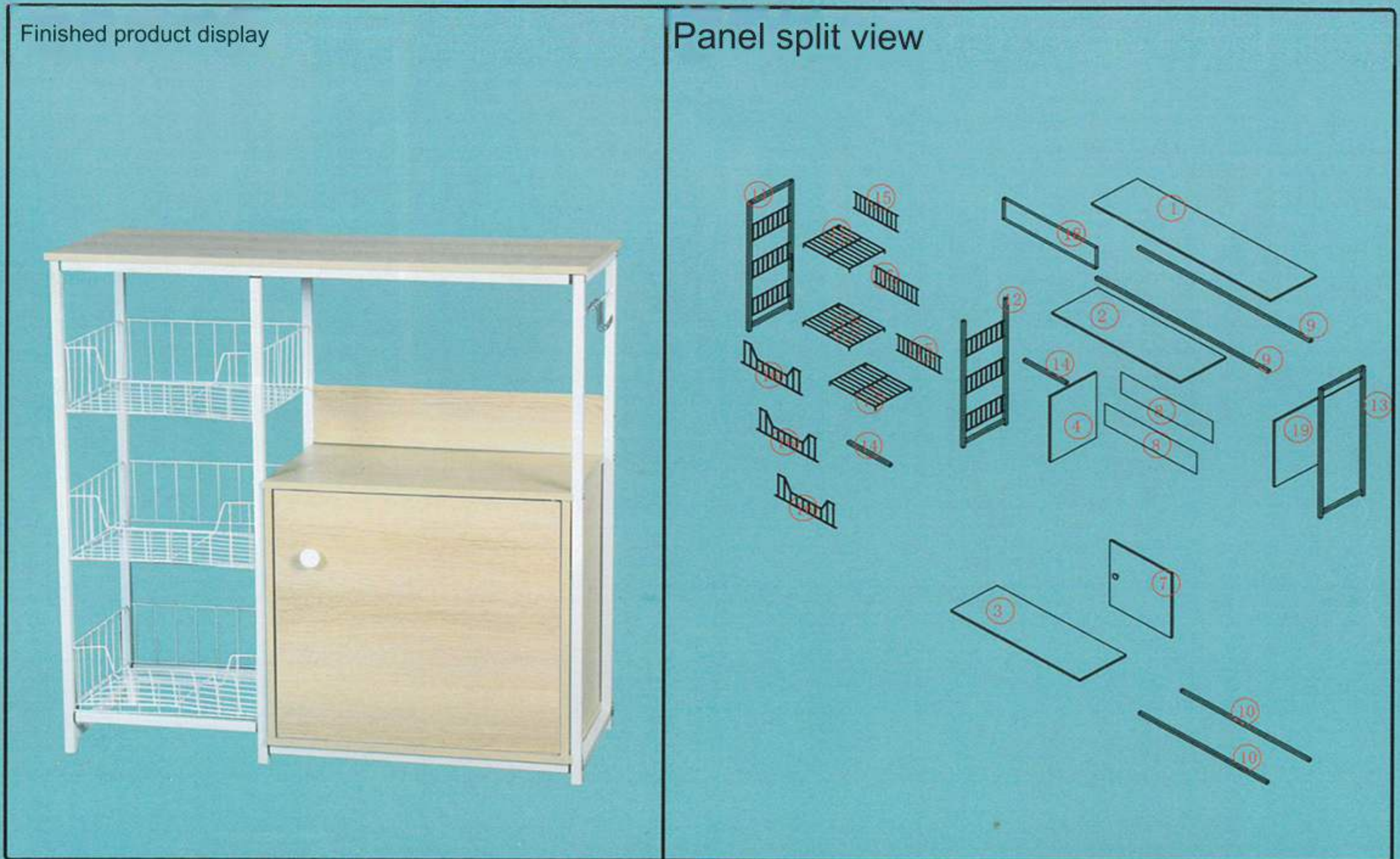


# WCK006-80CM



Please be sure to use a manual screwdriver and refrain from using an electric drill.



Product accessories and quantity:

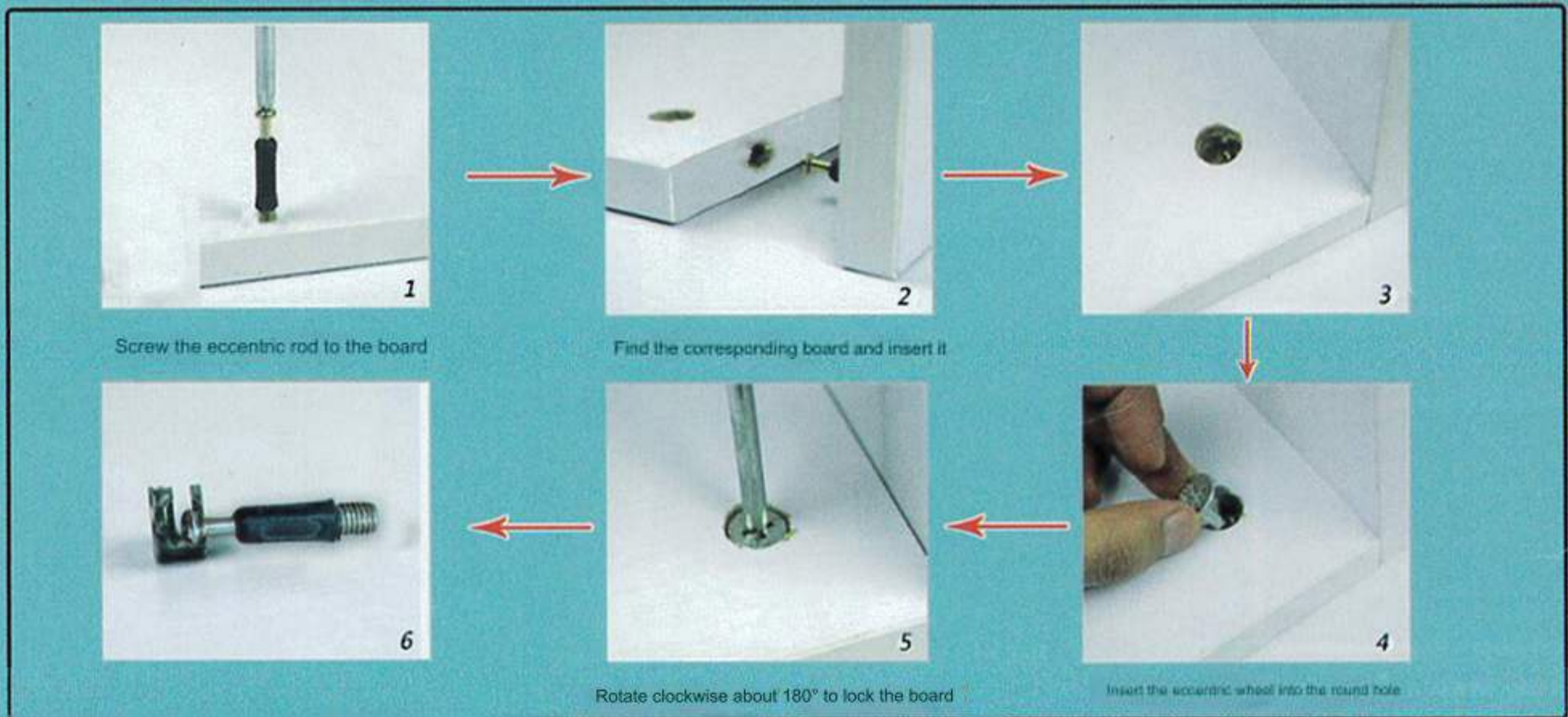
6*35 flat head screws	6*20 flat head screws	Plastic bulkhead	3.5*12 self-tapping screws	Eccentric wheel + eccentric rod	iron shelf pin	4*16 handle screw	Built-in door catch	Single hole door iron absorber
E6 × 14	E2 × 7	N19 × 7	A1 × 2	D14 × 5	K0 × 2	B8 × 2	L18 × 1	L19 × 1
Spring spacer pin	5*40 pointed screws	small nails	hook up	Xiaobai holds hands	4*40 self-tapping screws	screwdriver		
L8 × 1	C1 × 14	K20 × 20	S29 × 4	J0 × 1	B4 × 5	1		

Kind tips:

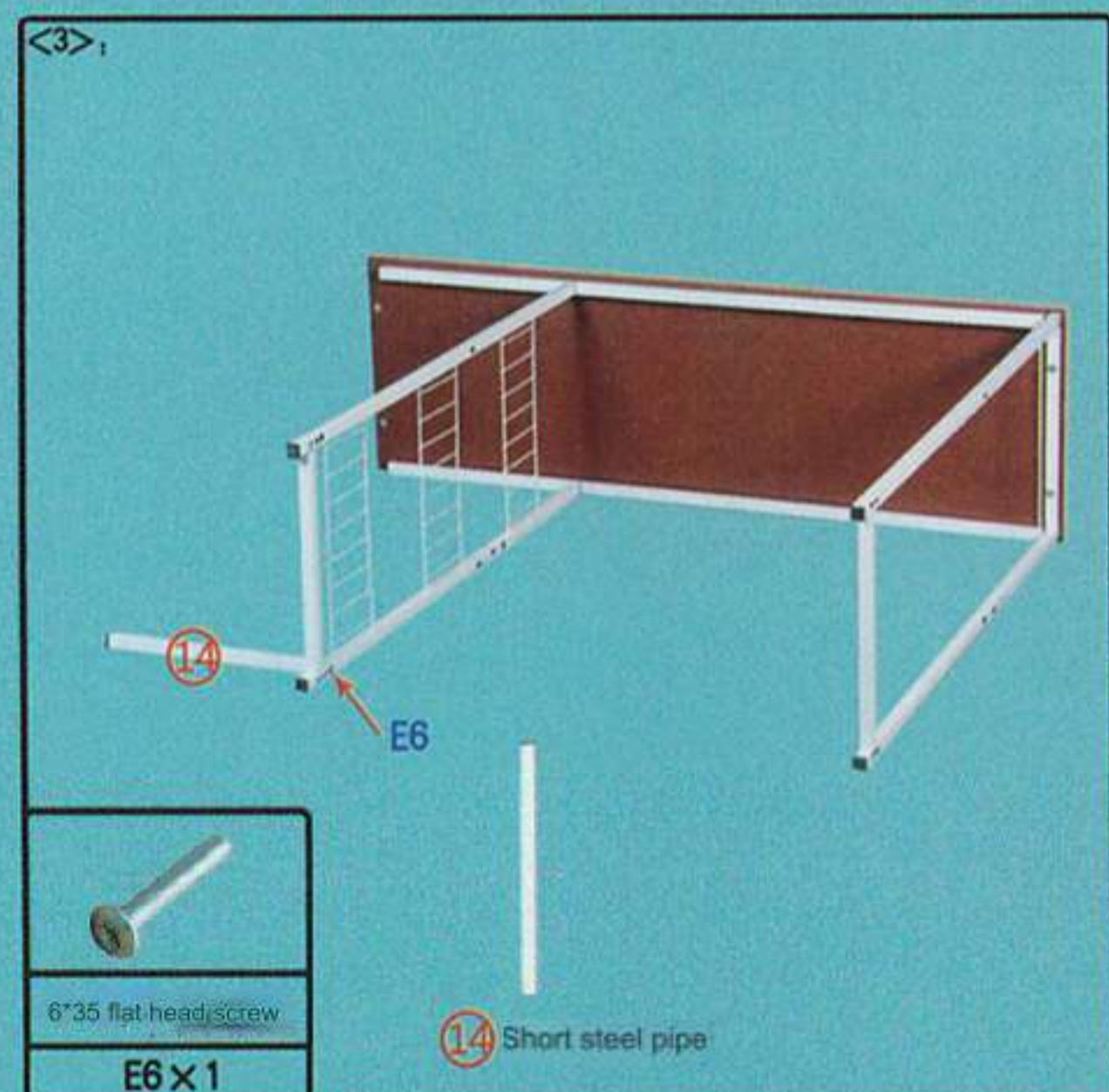
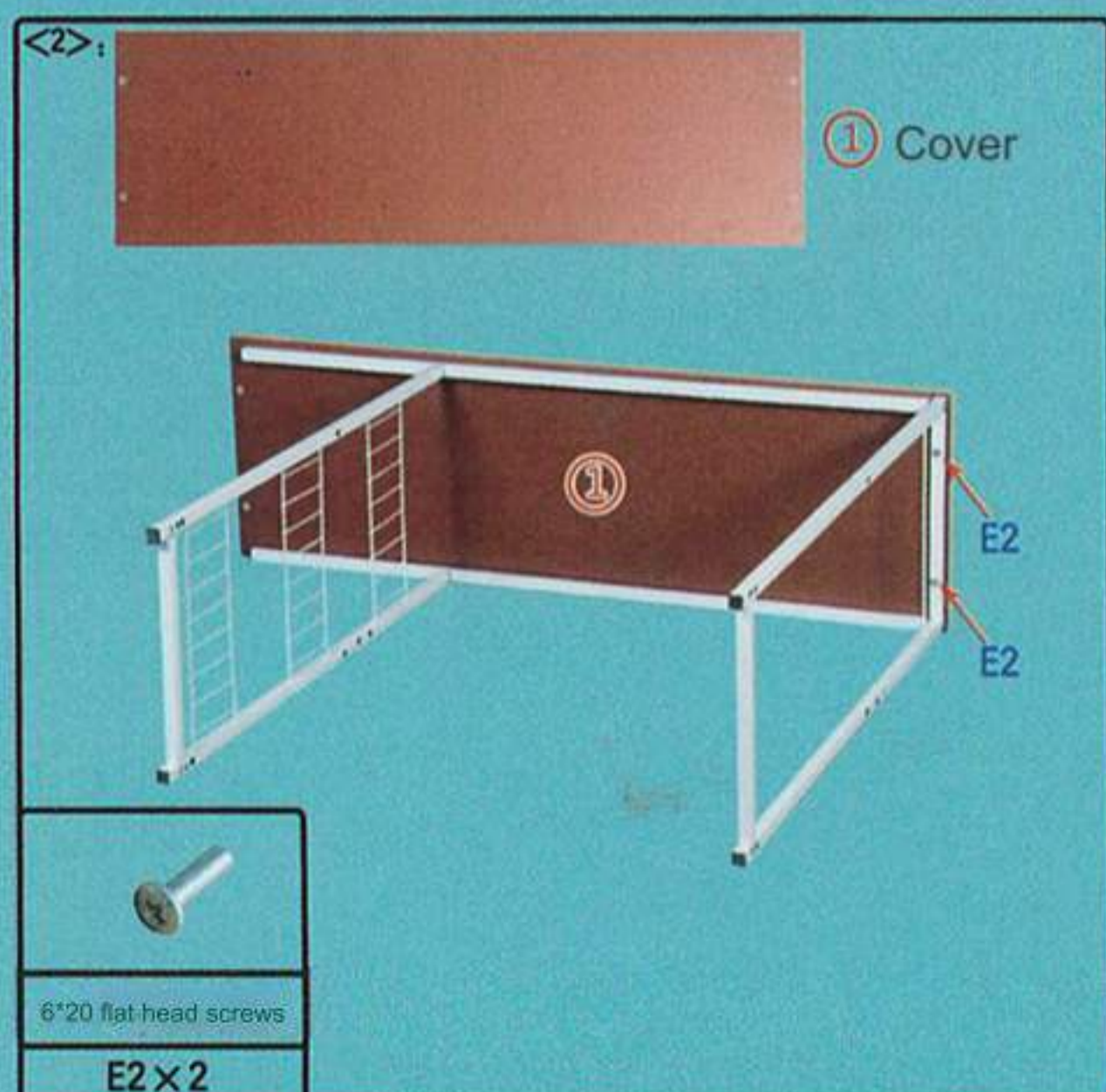
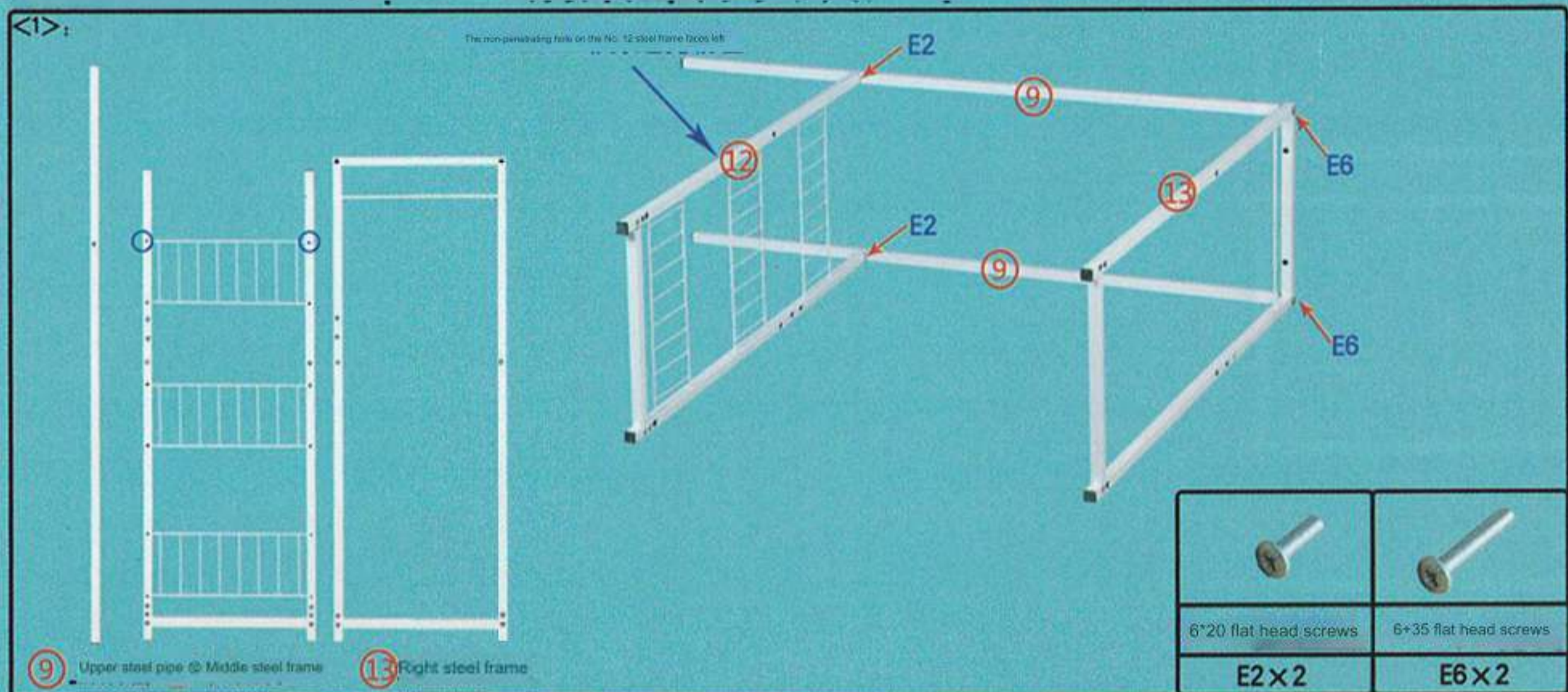
1. Please distinguish the boards according to the drawings when installing.
2. Tighten the screws 70%, and then tighten them again after everything is completed!
3. Some boards have a red side, and the red side faces down or inward.
4. Please refer to the actual product for product color. The contents shown in the manual are for reference only.



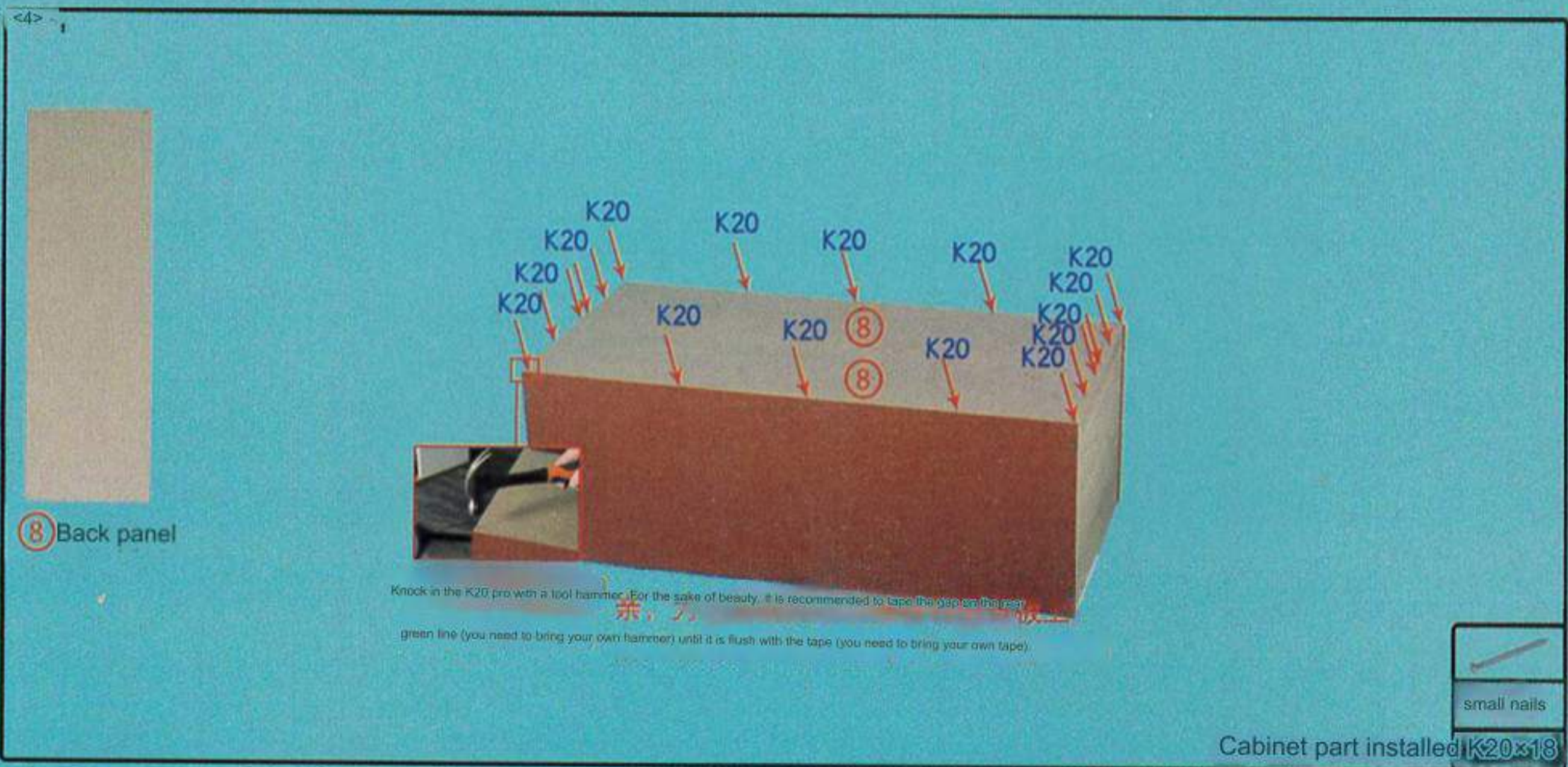
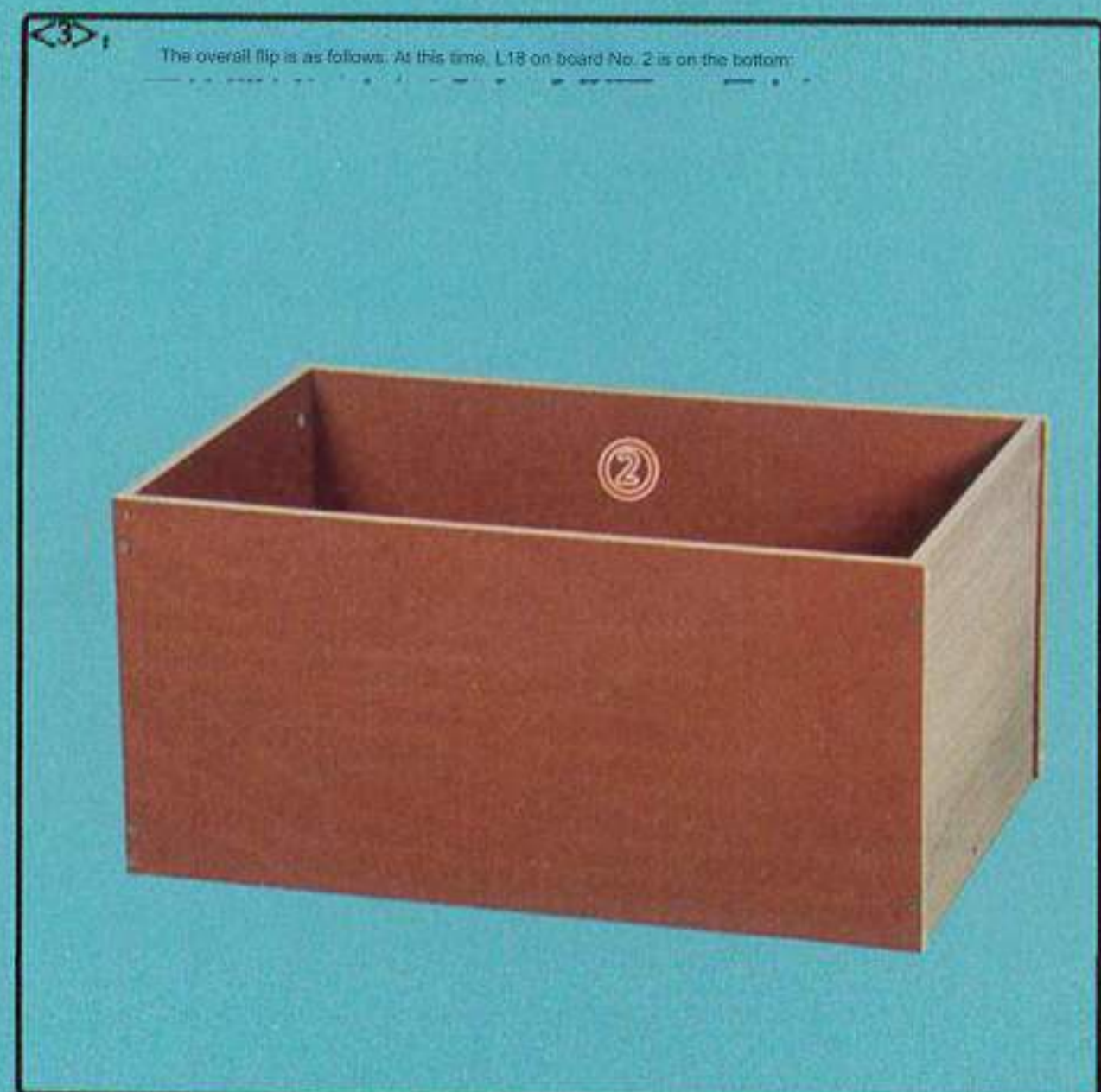
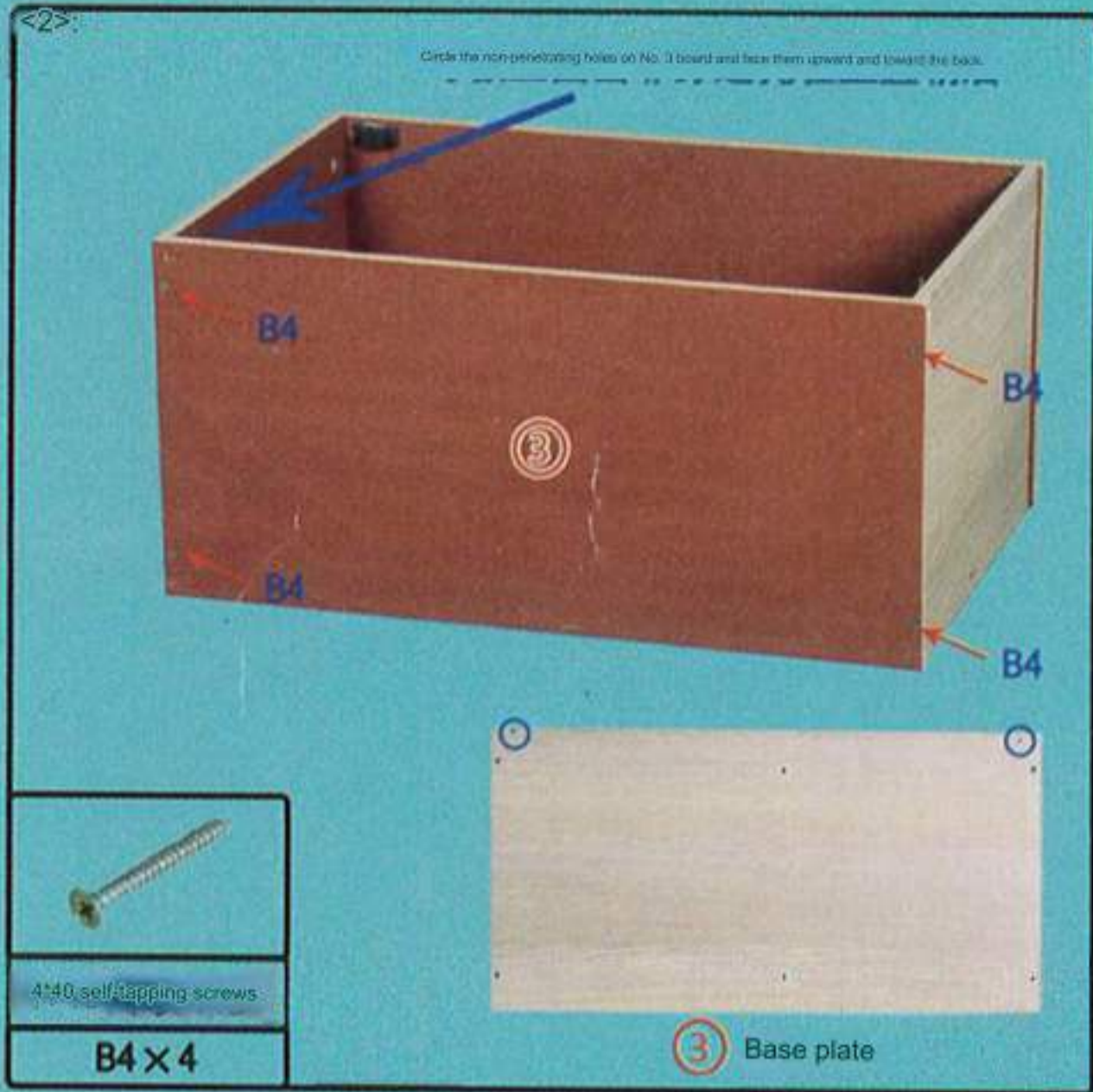
Installation principle of eccentric parts:



Start the installation; Step 1: The steel frame part is installed as follows:







Step 3: The overall installation is as follows:

