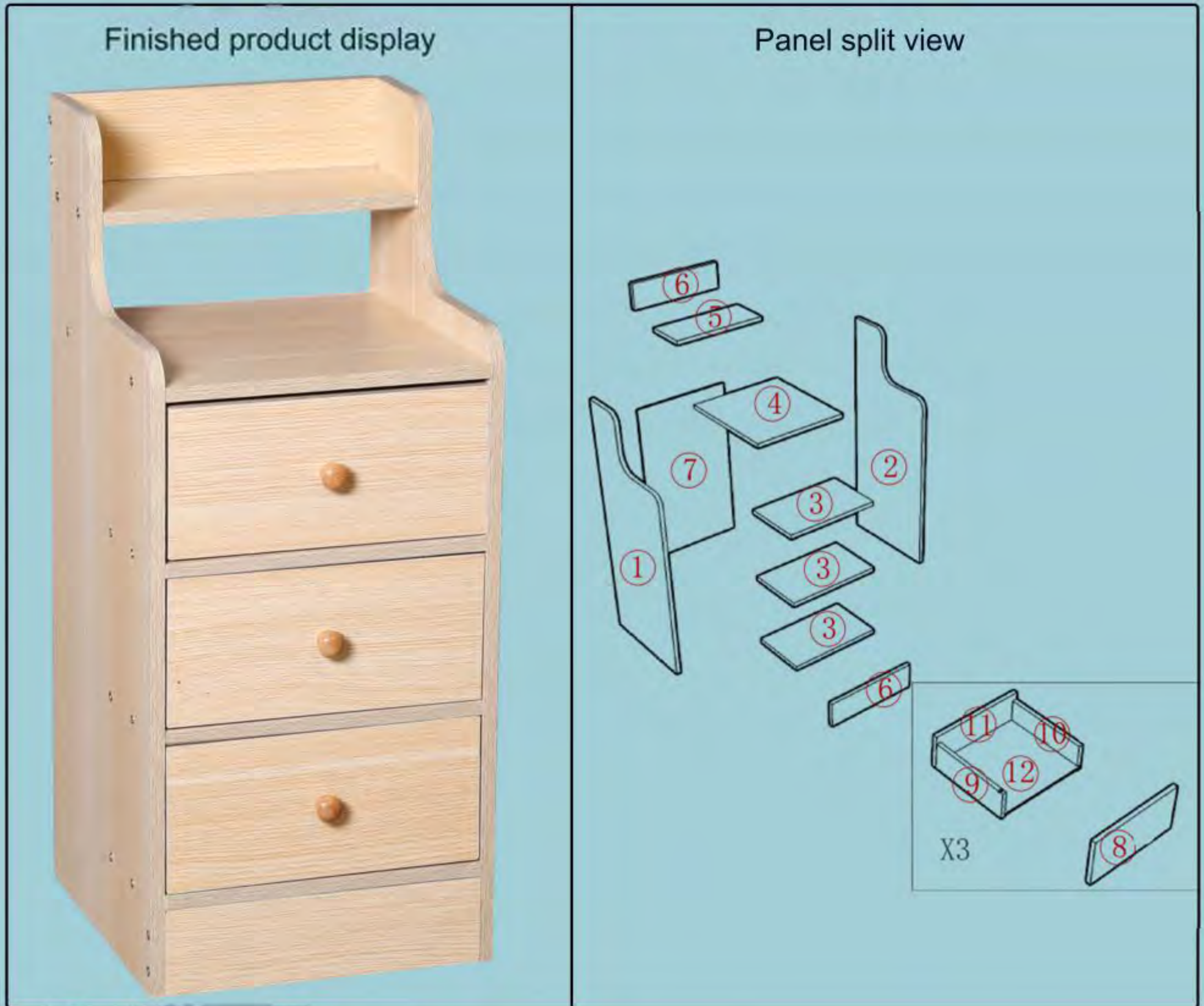


CBD013-WOD/WHT

Please be sure to use a manual screwdriver and refrain from using an electric drill.

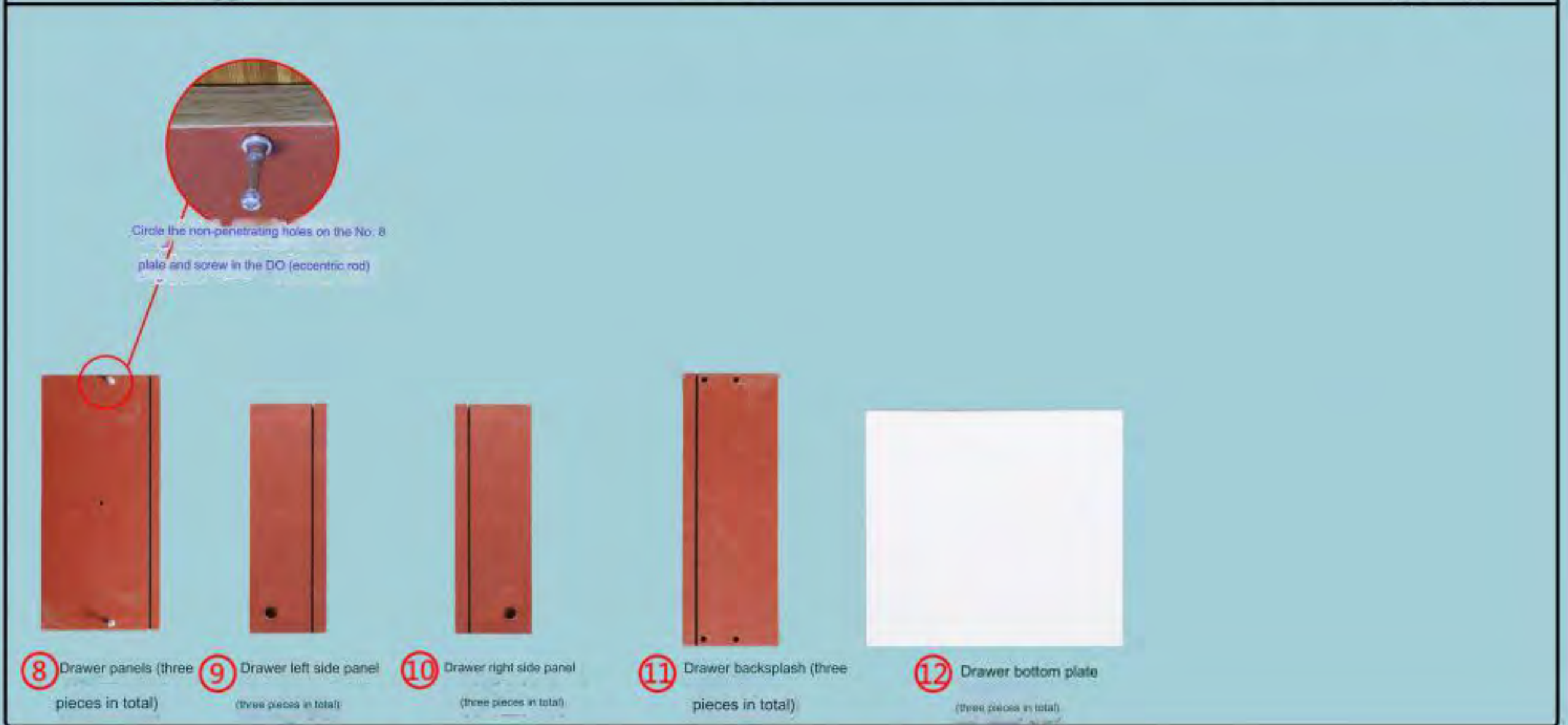


Product accessories and quantity:

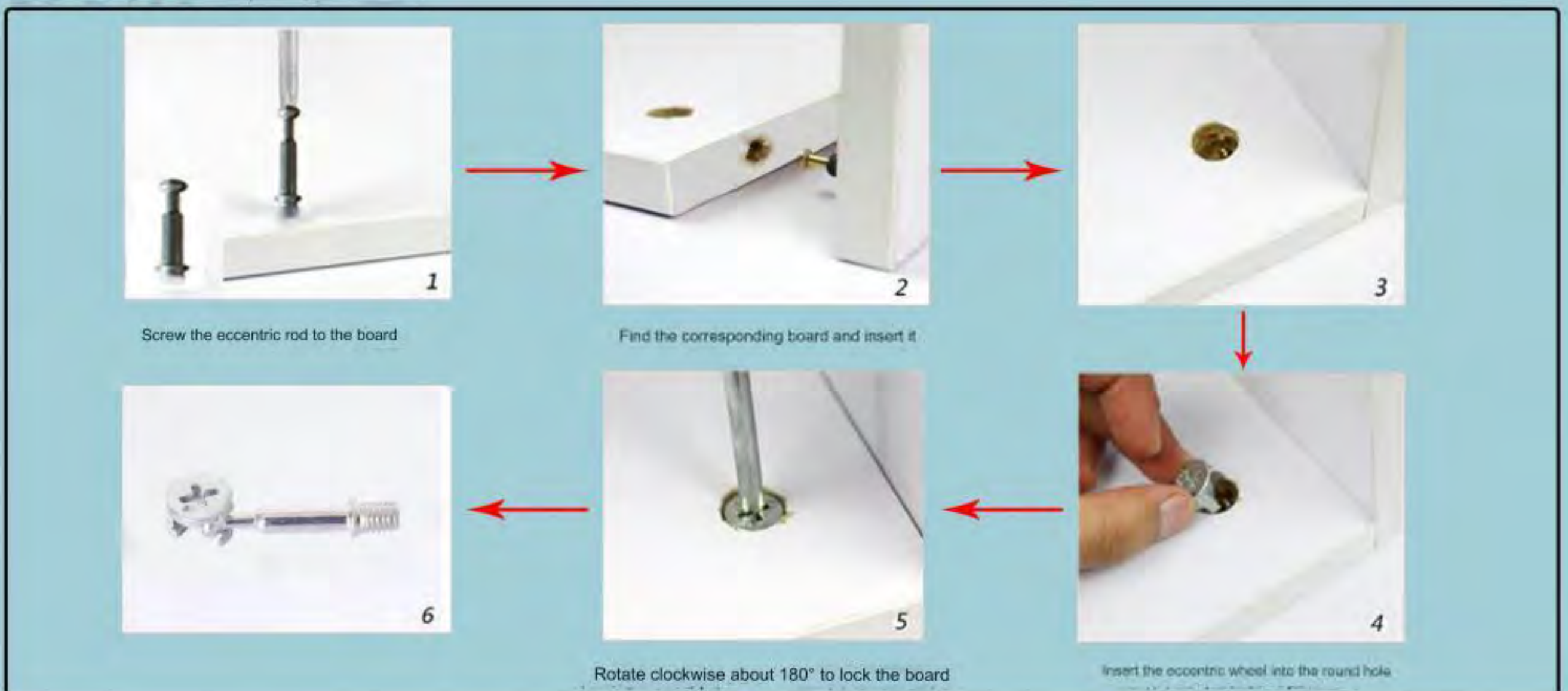
Eccentric wheel + eccentric rod	4*18 handle screw	iron shelf pin	Solid wood saled handle	small nails	4*40 self-tapping screws	screwdriver
D0×7	B0×4	K0×7	J11×3	K20×9	B4×42	1

Kind tips:

1. Please distinguish the boards according to the drawings when installing.
2. Tighten the screws 70%, and then tighten them again after everything is completed!
3. Some boards have a red side, and the red side faces down or inward.
4. Please refer to the actual product for product color. The contents shown in the manual are for reference only.



Installation principle of eccentric parts:



Start the installation; Step 1: Install the drawer part as follows:

<1>:

⑧ Drawer panel

⑨ Drawer left panel ⑩: Drawer right panel

Put in DO (eccentric wheel)

Eccentric wheel + eccentric rod
D0 × 2

<2>:

⑫ Drawer bottom

Insert the No. 12 plate first, then rotate the DO (eccentric wheel) clockwise to lock the plate

<3>:

⑫ Drawer backslash

⑪

B4
B4
B4
B4

4*40 self-tapping screws
B4 × 4

<4>:

B0

J11

Solid wood salad handle	4*18 handle screw
J11 × 1	B0 × 1

<5>: Install the remaining two identical drawers in the same way.

The drawer installation is completed. There are three drawers in total.

Step 2: The overall installation is as follows:

<1>:

⑤ Top plate

① Left side panel ② Right side panel

The non-penetrating holes on boards 1 and 2 are on top and opposite each other.

B4

B4

B4

B4

⑤

4*40 self-tapping screws

B4 × 4

<2>:

④ Large laminate

B4

B4

B4

B4

B4

4*40 self-tapping screws

B4 × 4

<3>:

③ Small laminate

B4

B4

B4

B4

B4

B4

B4

B4

B4

B4

B4

4*40 self-tapping screws

B4 × 12

<4>:

⑥ Pull plate

B4

B4

B4

B4

4*40 self-tapping screws

B4 × 4

<5>:

The overall flip is as follows:

⑥ Pull plate

B4

B4

4*40 self-tapping screws

B4 × 4

