







TV002-120CM Installation Instruction

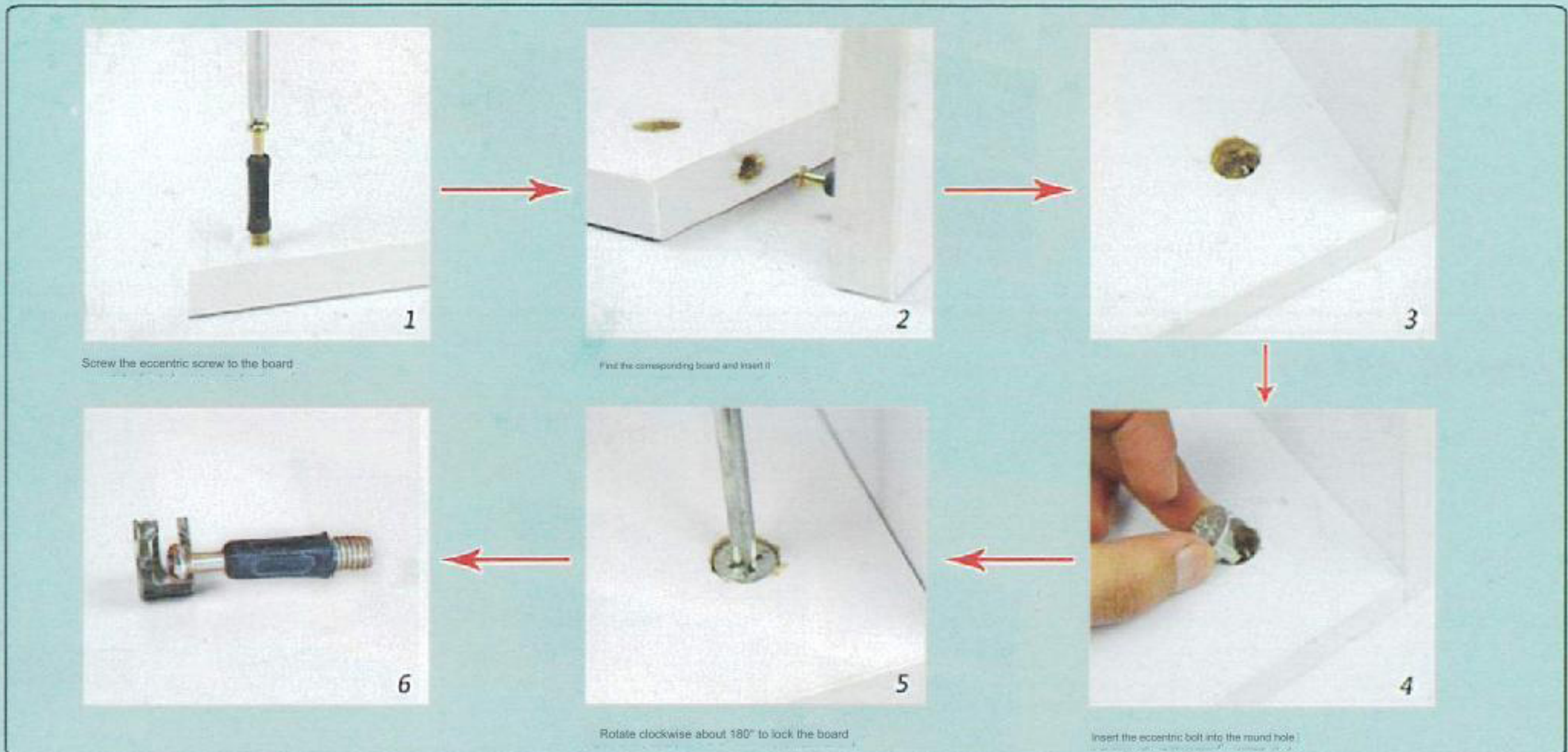
Please be sure to use a manual screwdriver and refrain from using an electric drill.



					
"Eccentric screw	eccentric bolt	3.5CM self-tapping screws	metal pin	3CM flat head screws	small nails
A*10	B*10	C*18	D*3	E*5	F*10

Warm reminder: Tighten the screws 70% during installation, and then tighten them again after everything is completed!

Installation principle of eccentric parts:



Board name and serial number:



The serial numbers in the installation diagram are out of order not because of the lack of search. You just need to compare the serial numbers to install them.

Cover plate
①

Hole spacing is the same



Left side panel
②

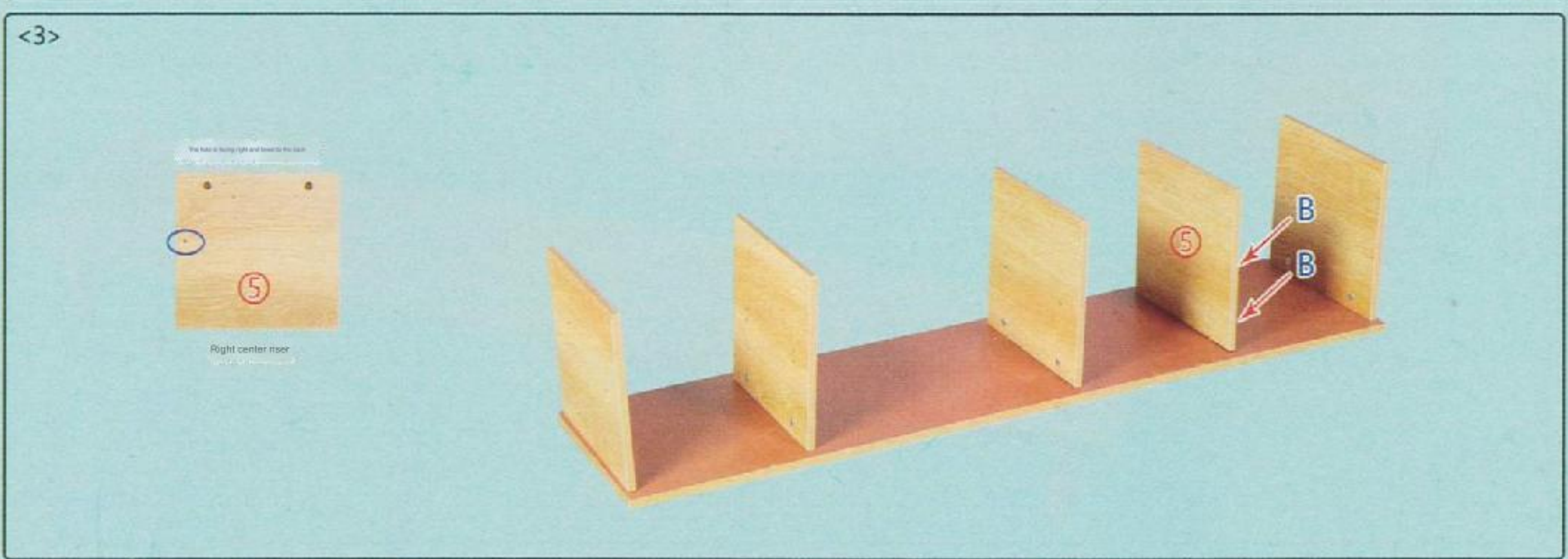
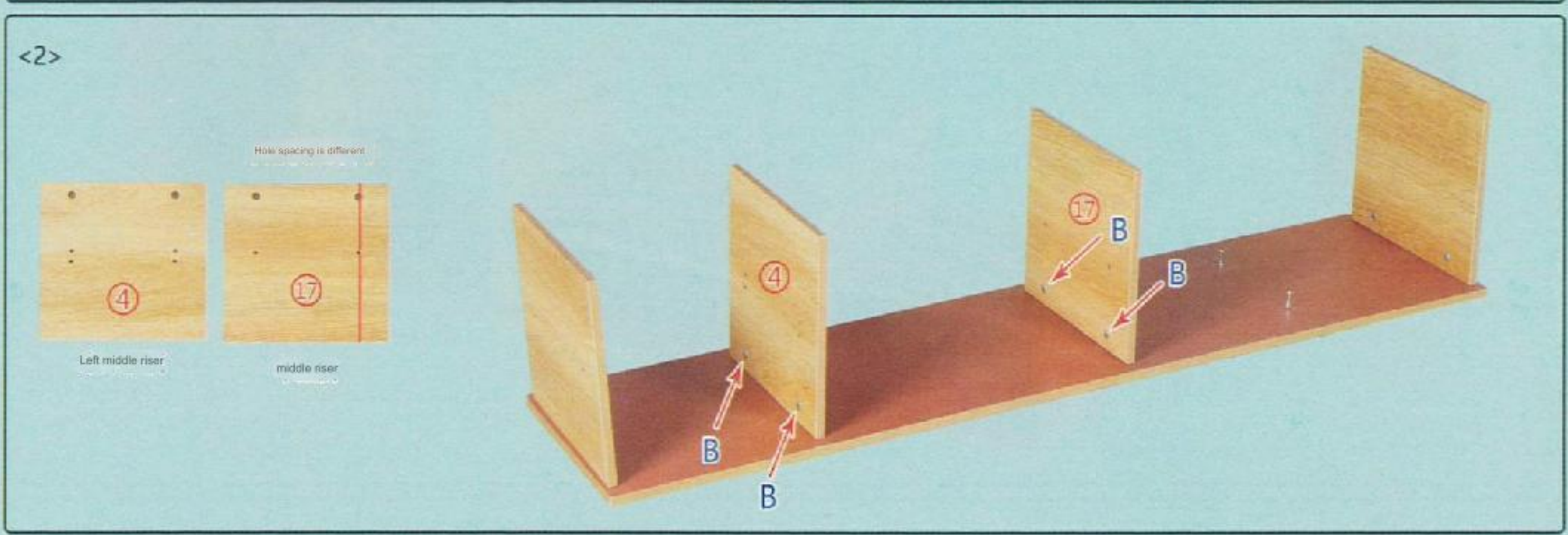
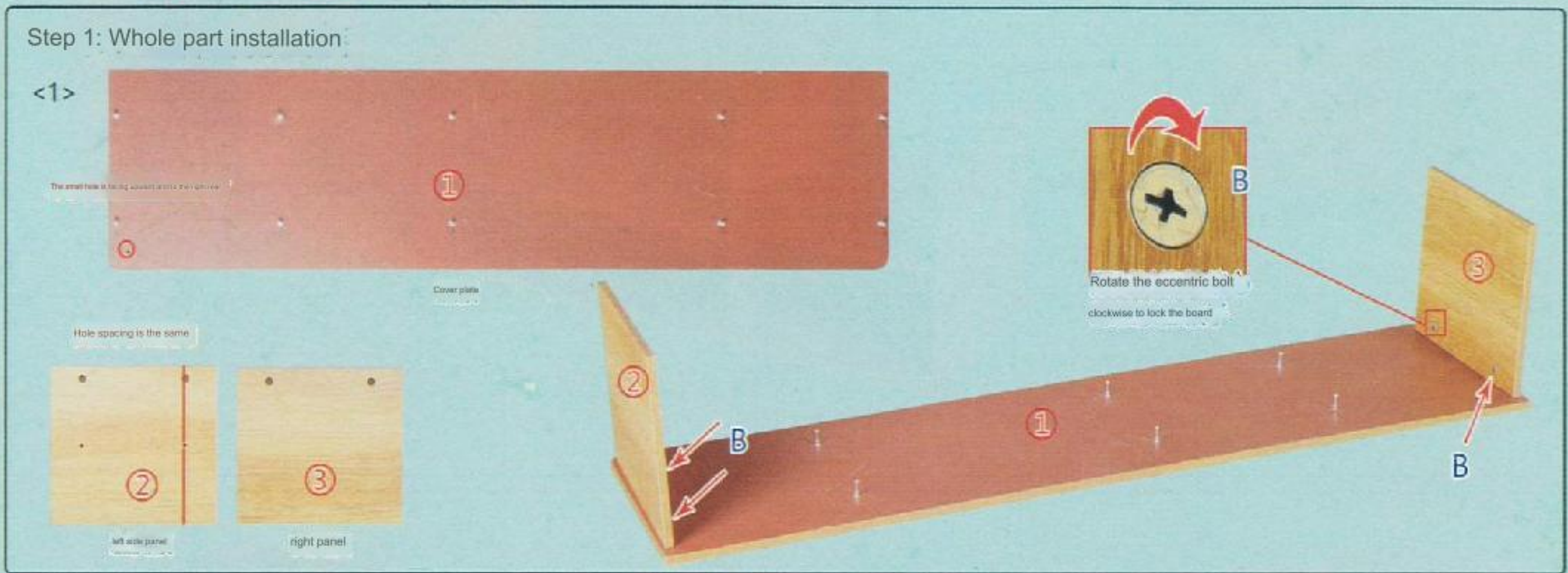
Right side panel
③

Back plate (left)
④

Back plate (right)
⑤

Large laminate
⑧

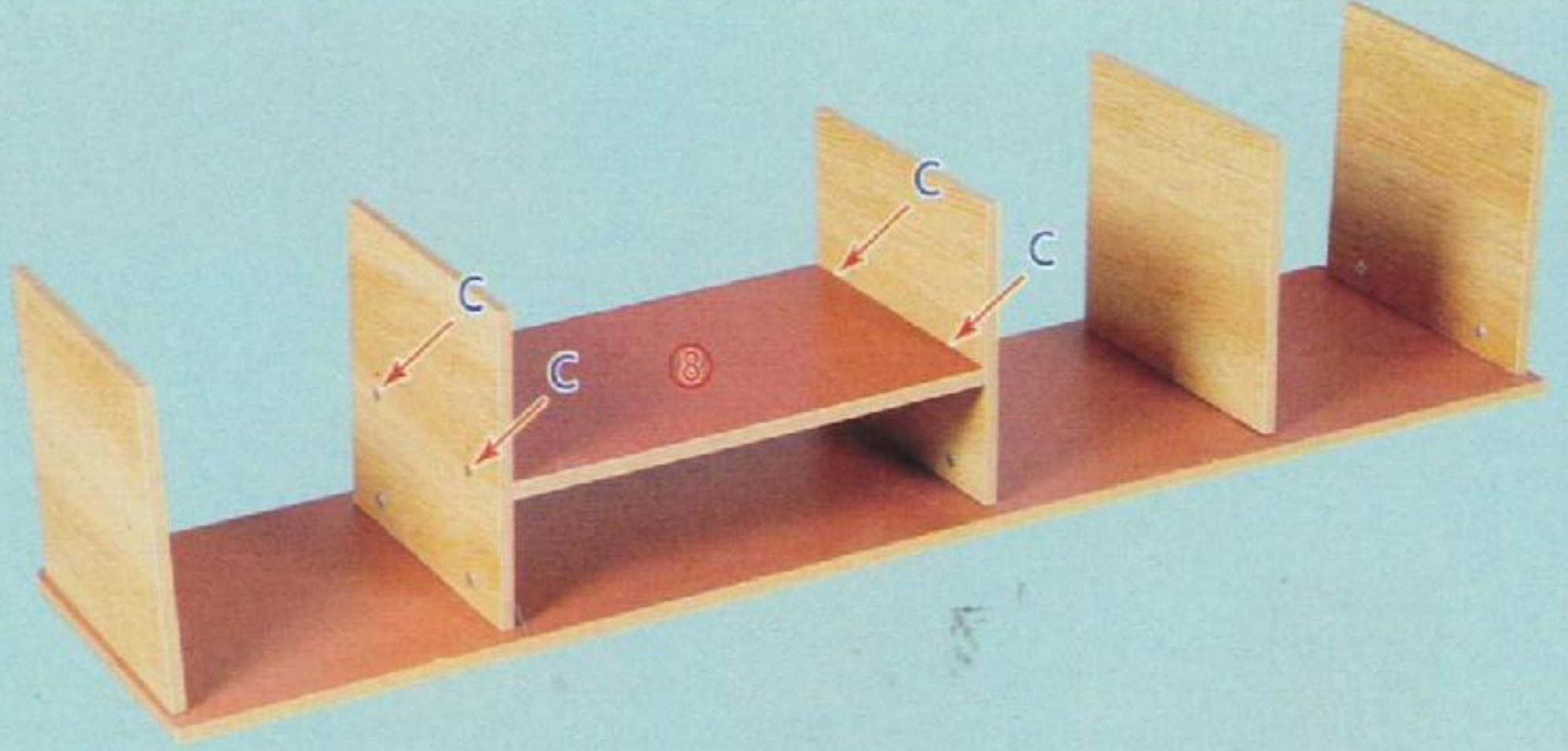
Small laminate
⑨



<4>



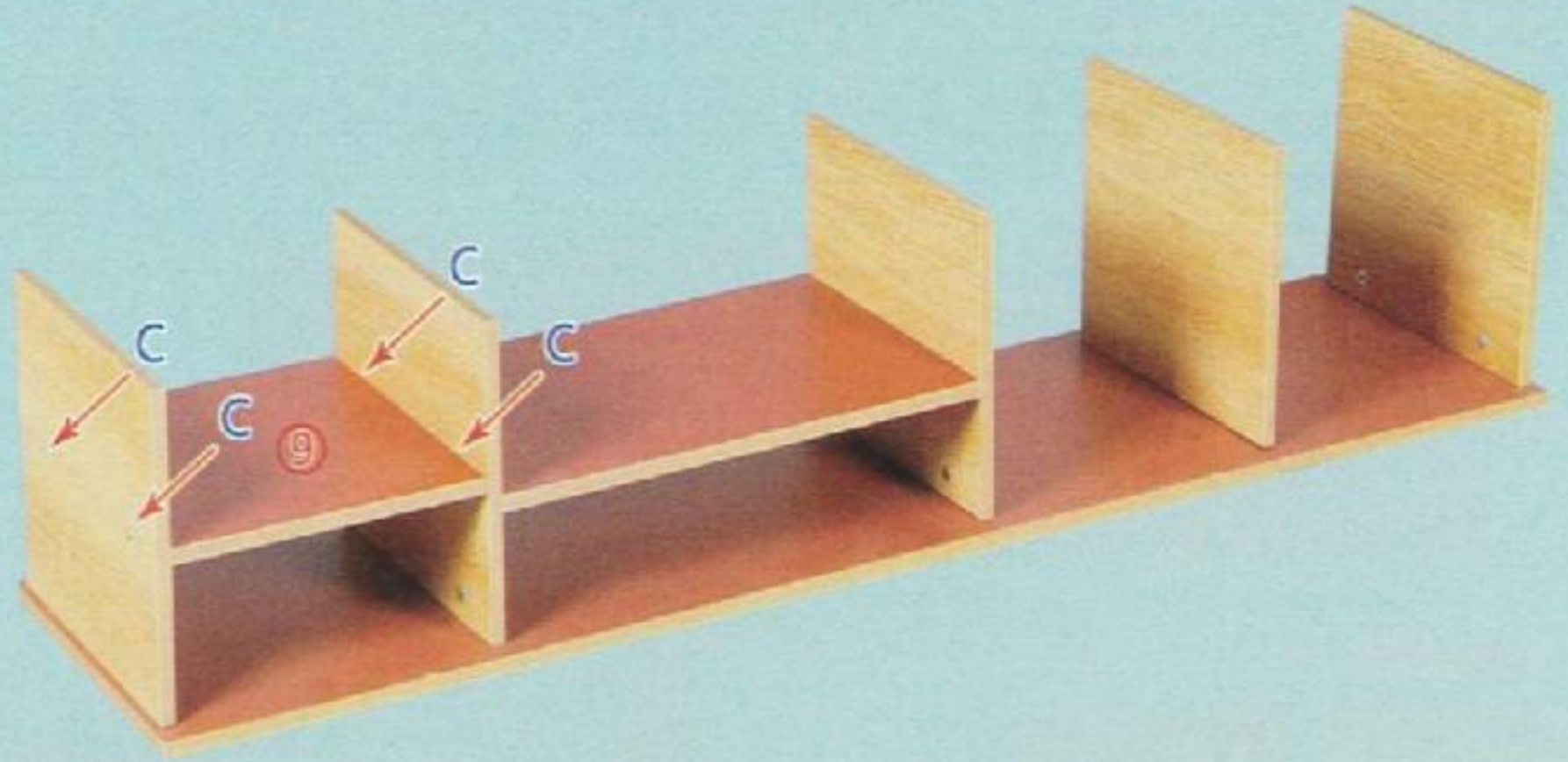
large laminate



<5>



small laminate

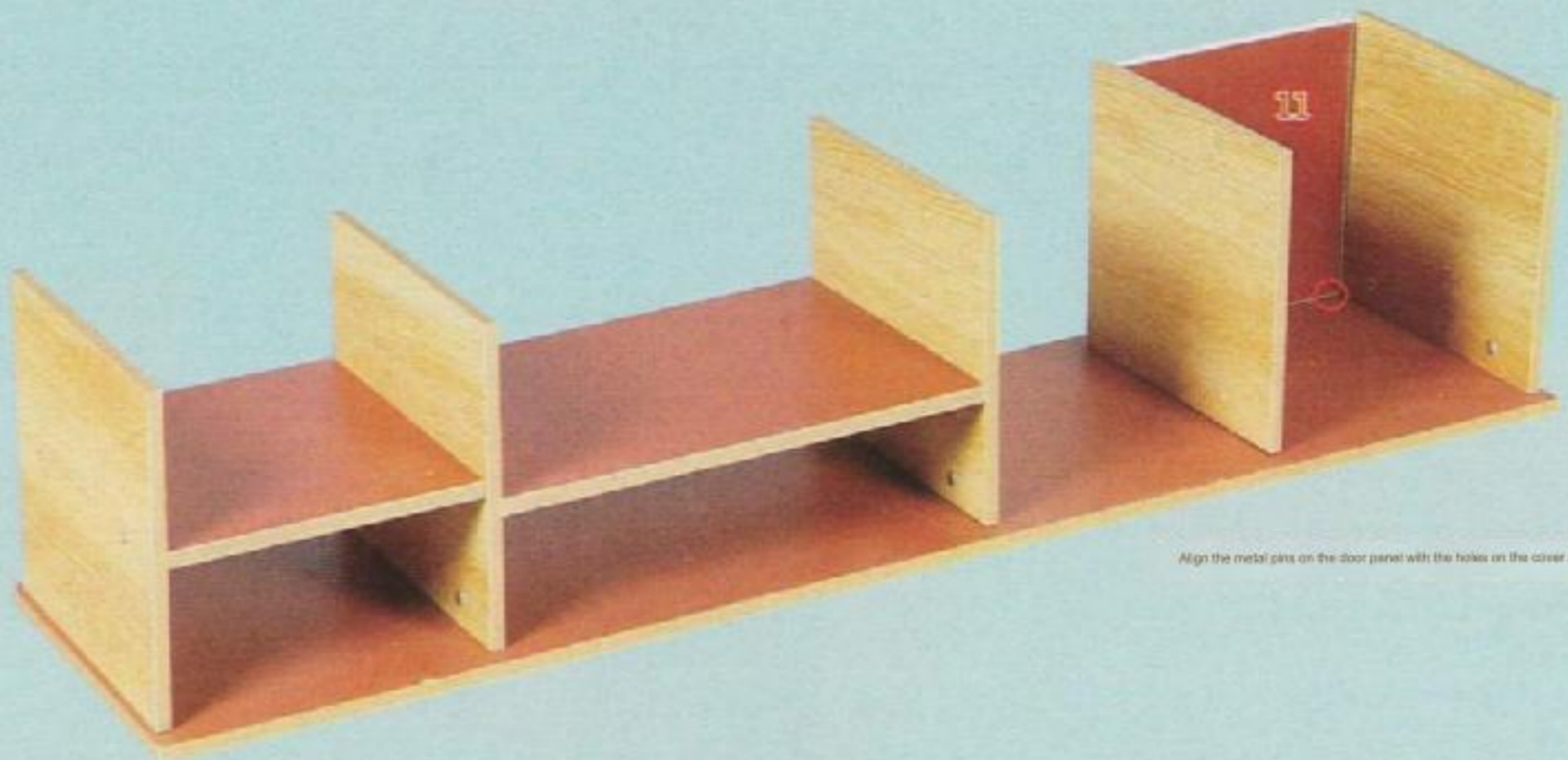


<6>



Arc to the lower left

D door panel



Align the metal pins on the door panel with the holes on the cover and insert them.

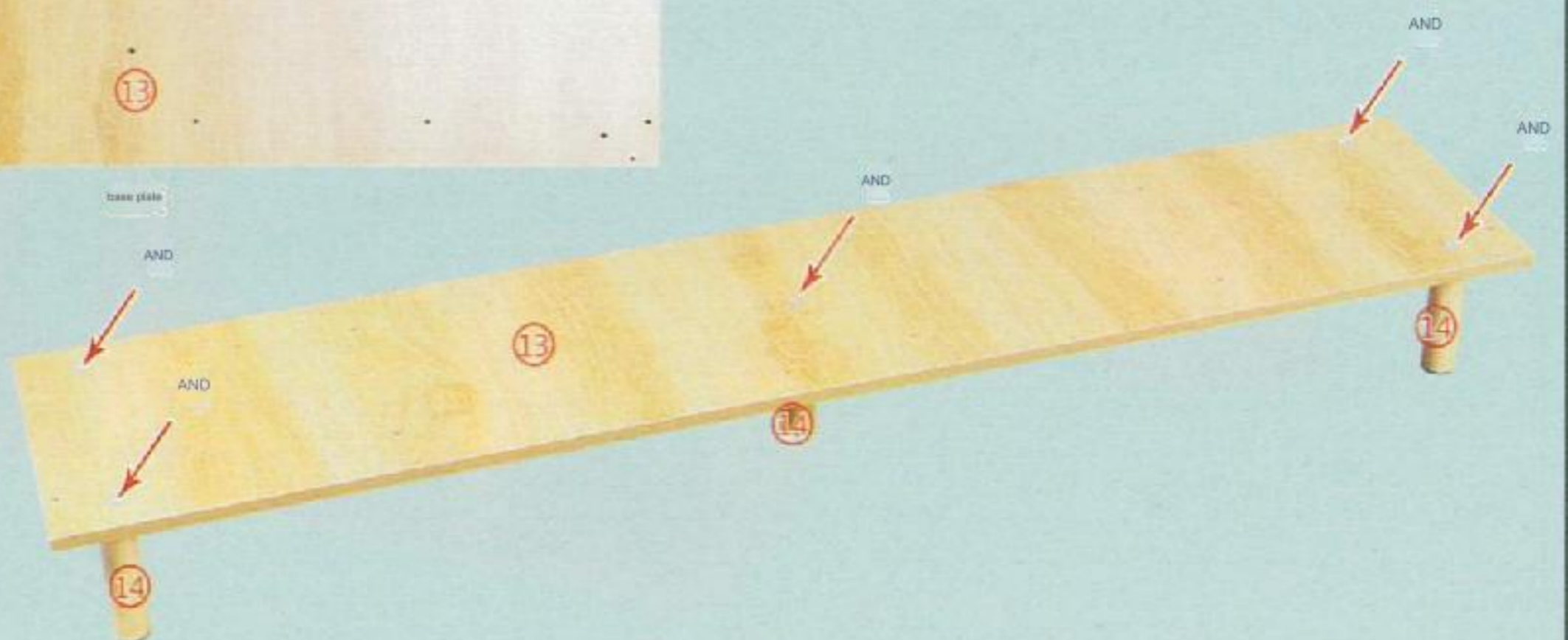
<7>



base plate

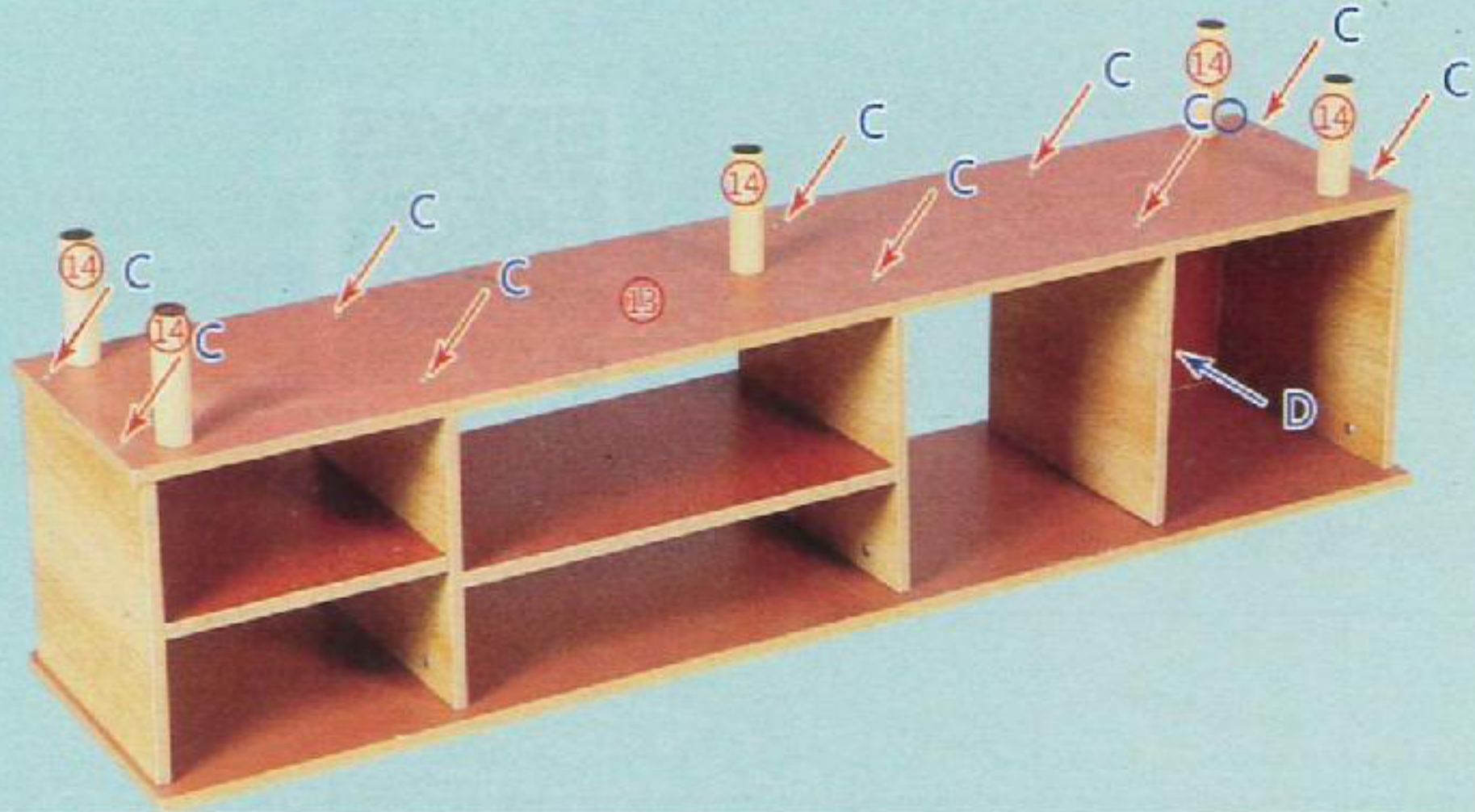


cover pins
(five in total)



<8>

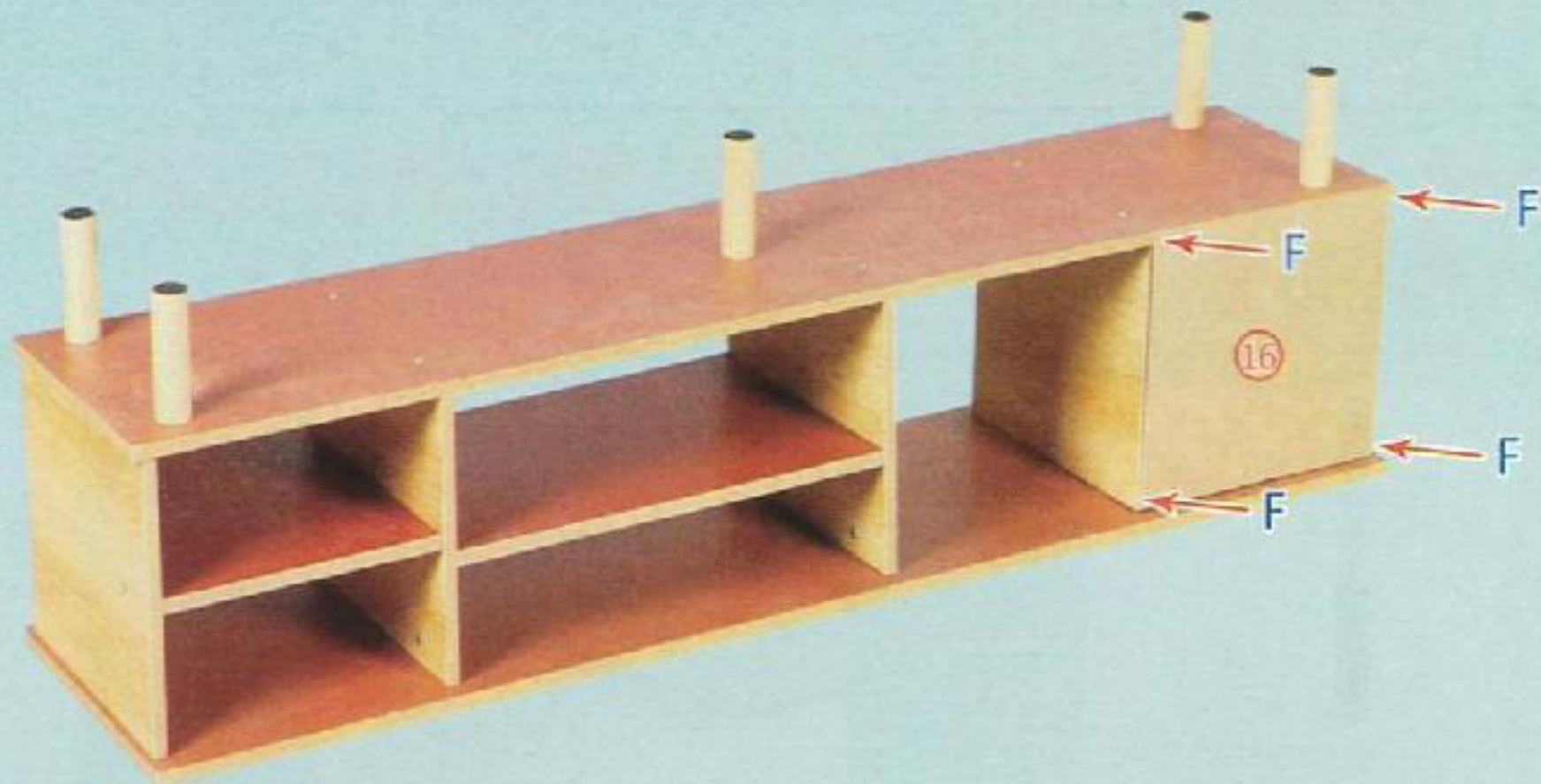
Align the small holes on the base plate with the metal pins on the door panel and place them



<9>



back panel



<10> The overall arrangement is completed and the installation is completed.



Complete picture!