

Furniture installation



TV003 Installation Instruction



Installation process of TV cabinet coffee table

TV003





D0*40



D0*40



B3*20



A1*32



K20*20



L56*4



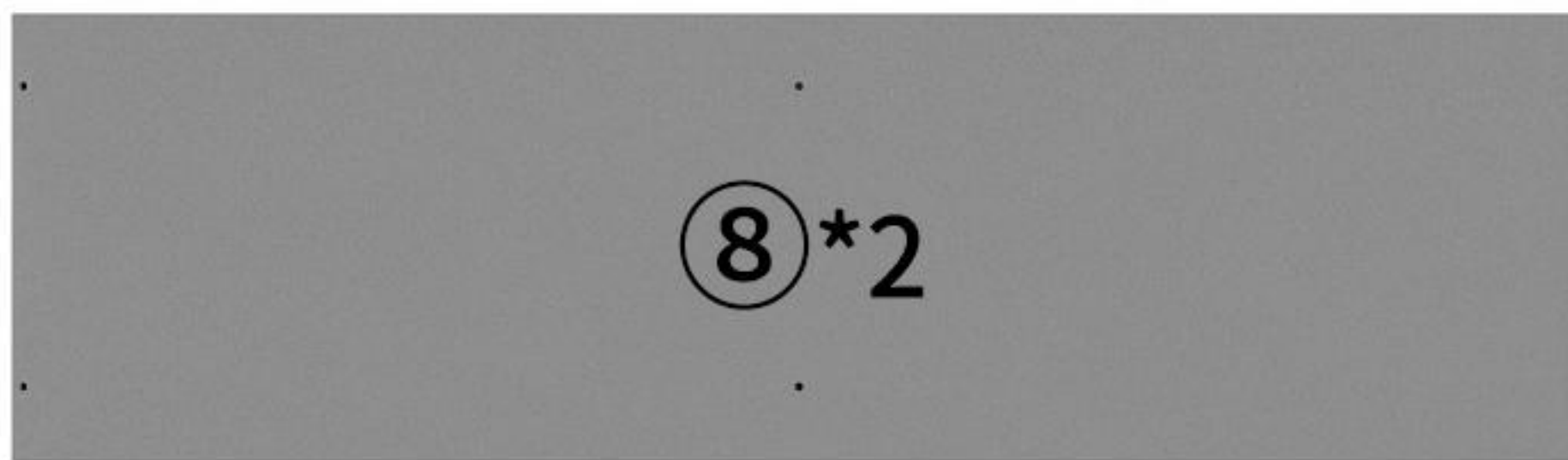
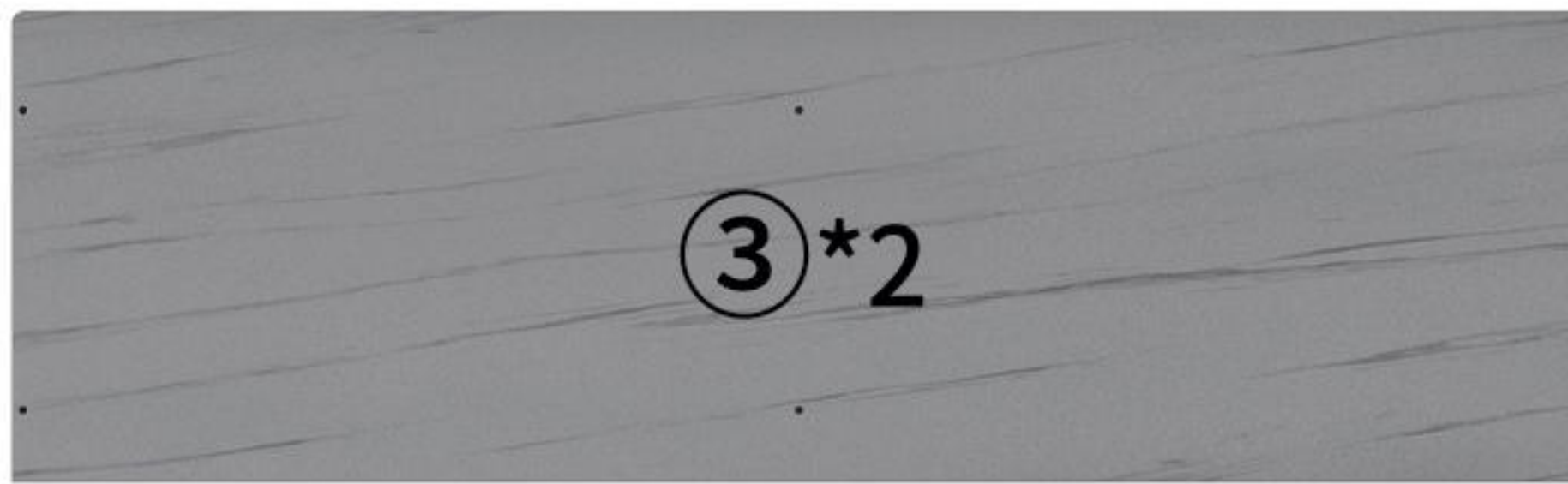
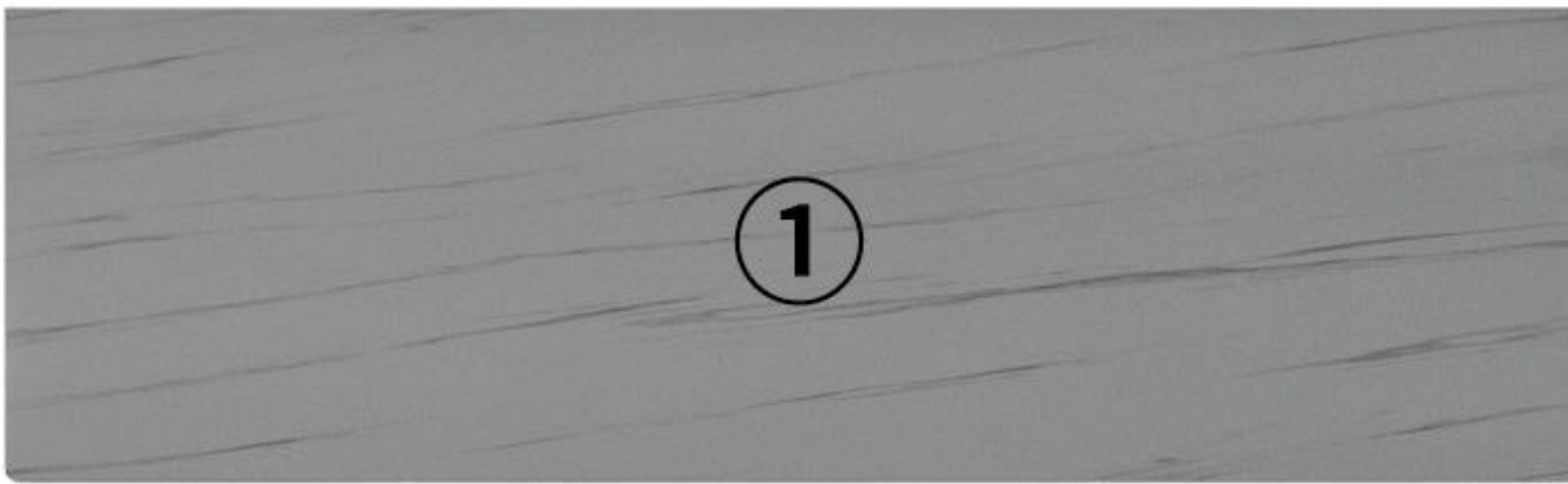
L55*4



D7*2



Screwdriver

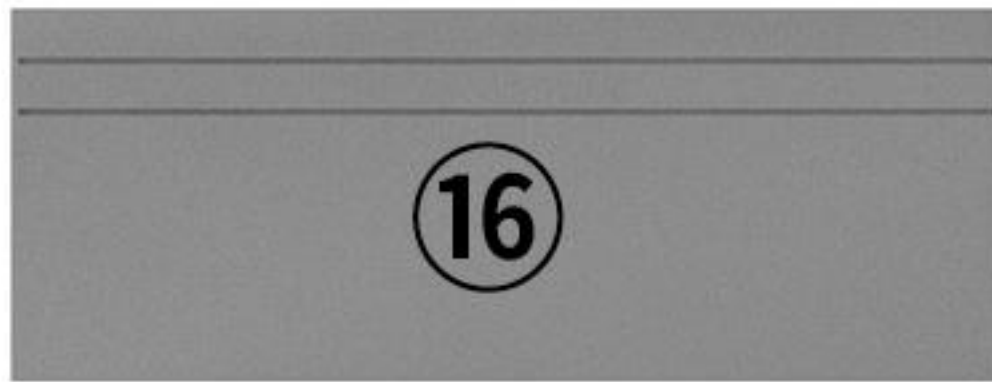




⑦*2



15



16



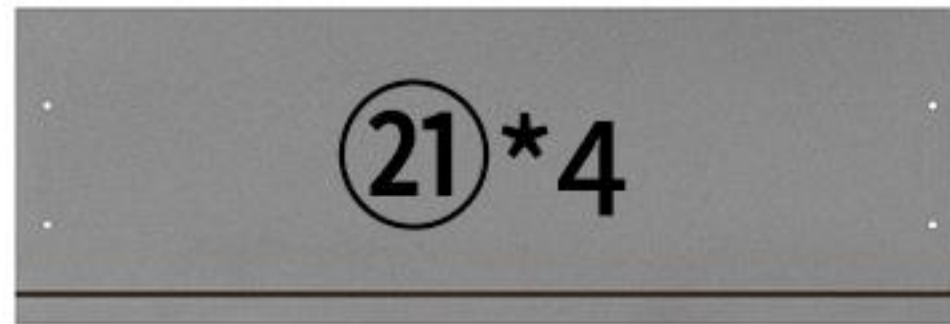
17



19*4



20*4



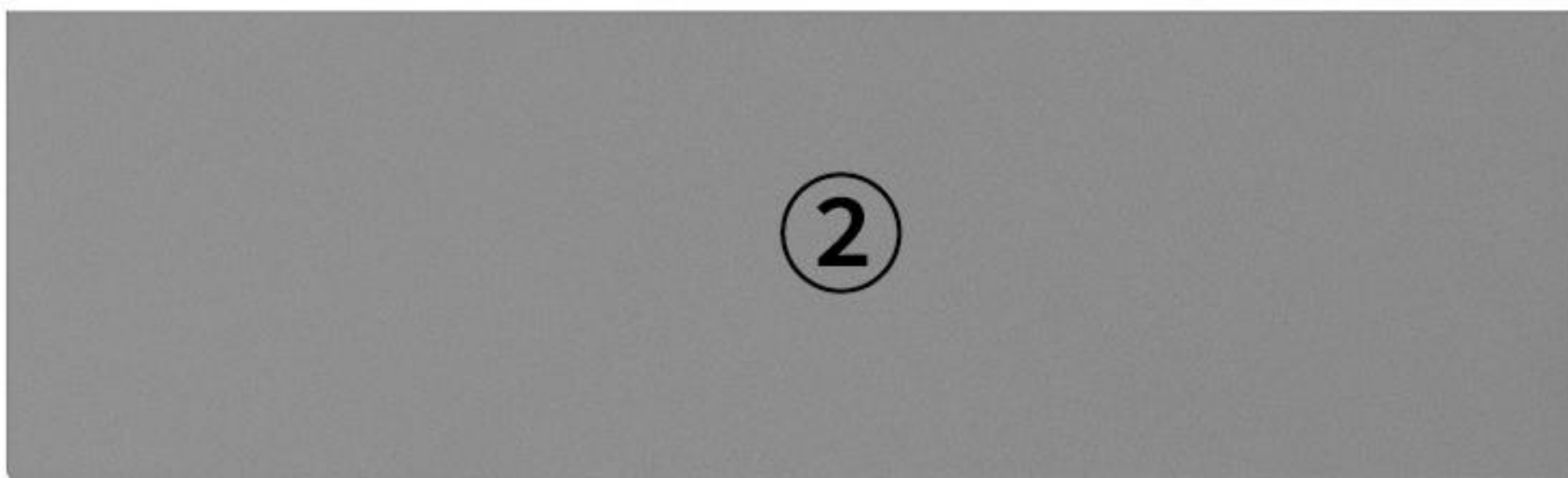
21*4



18



23*2



2

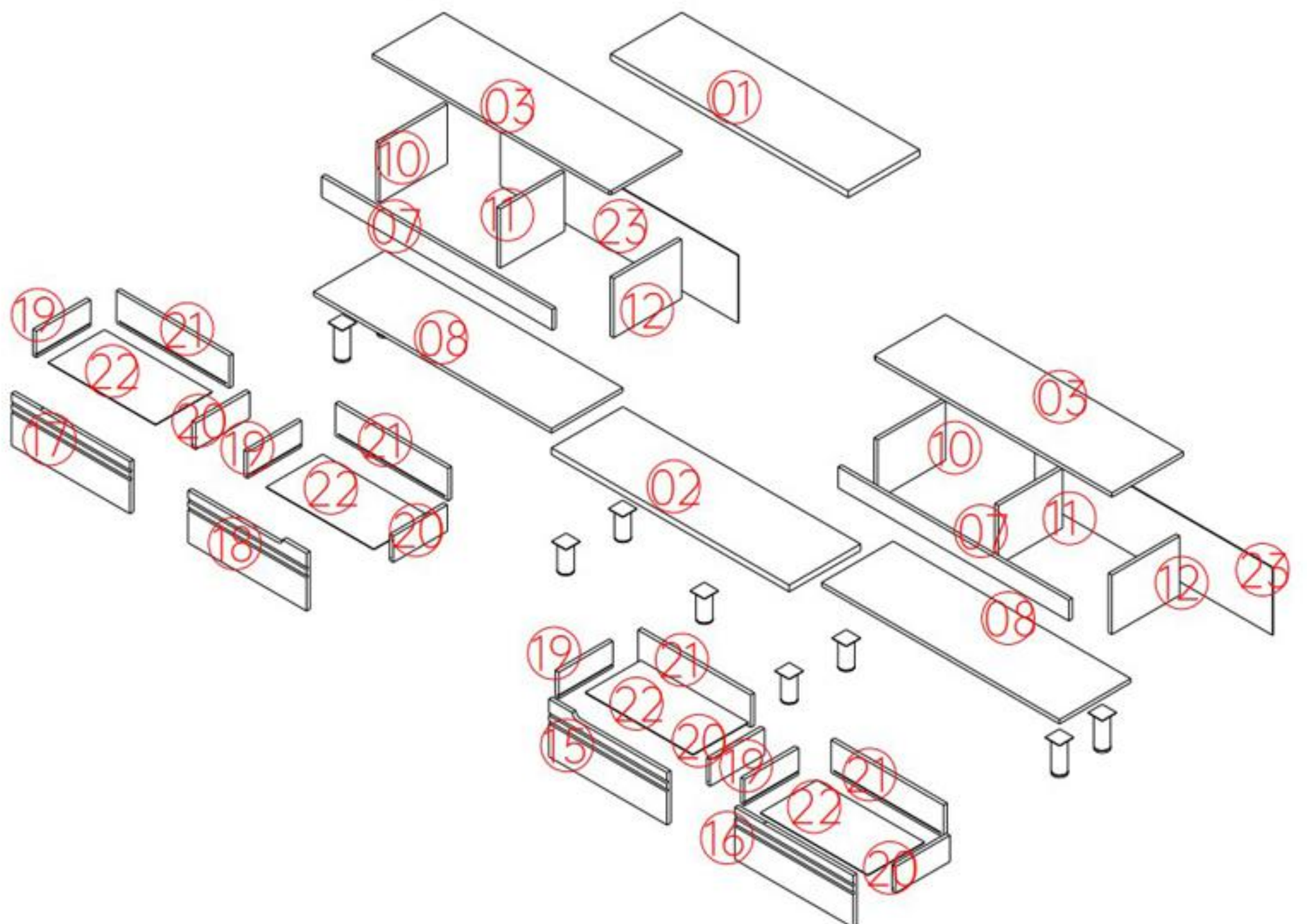


22*4

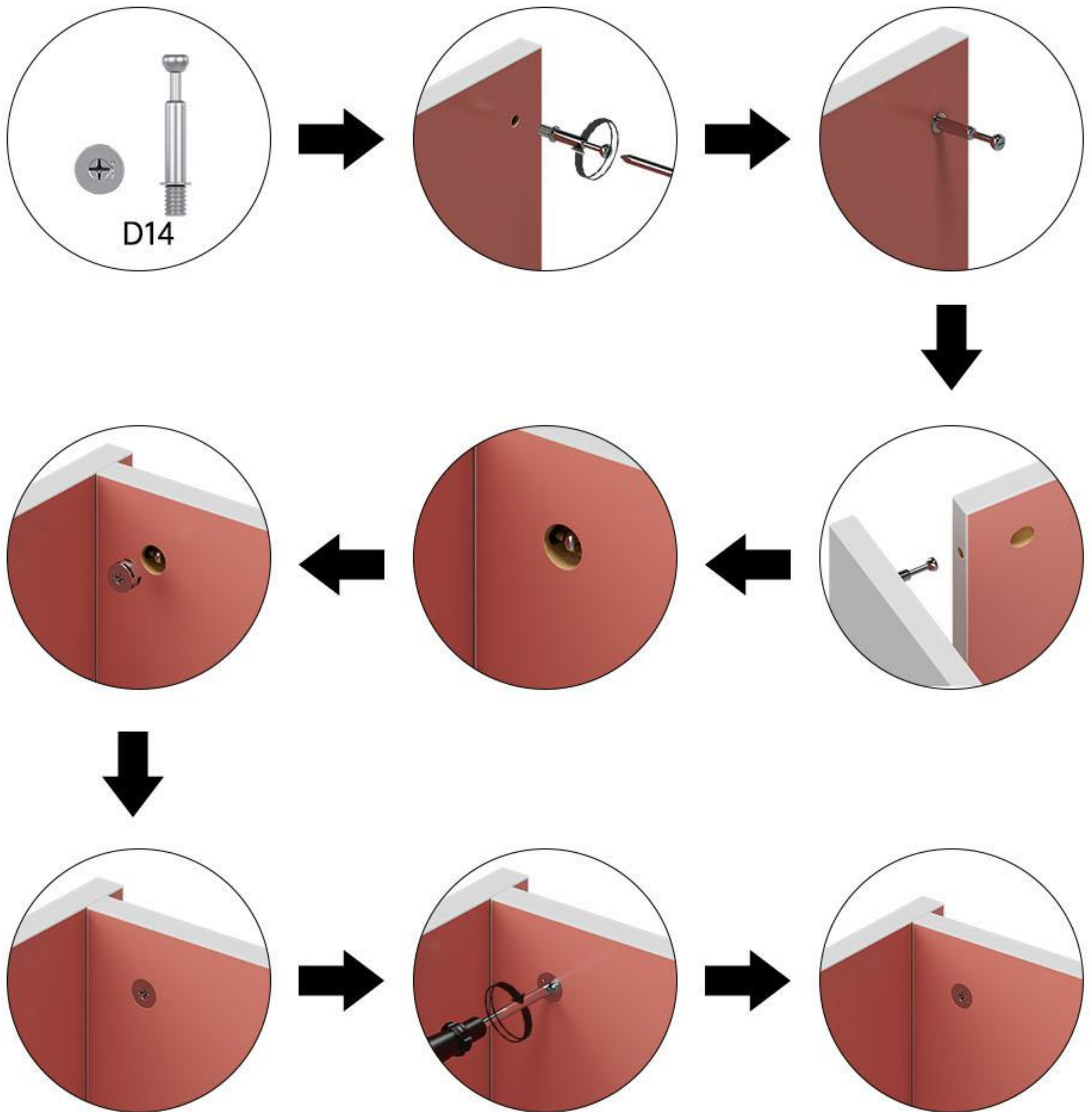
Presentation of finished product



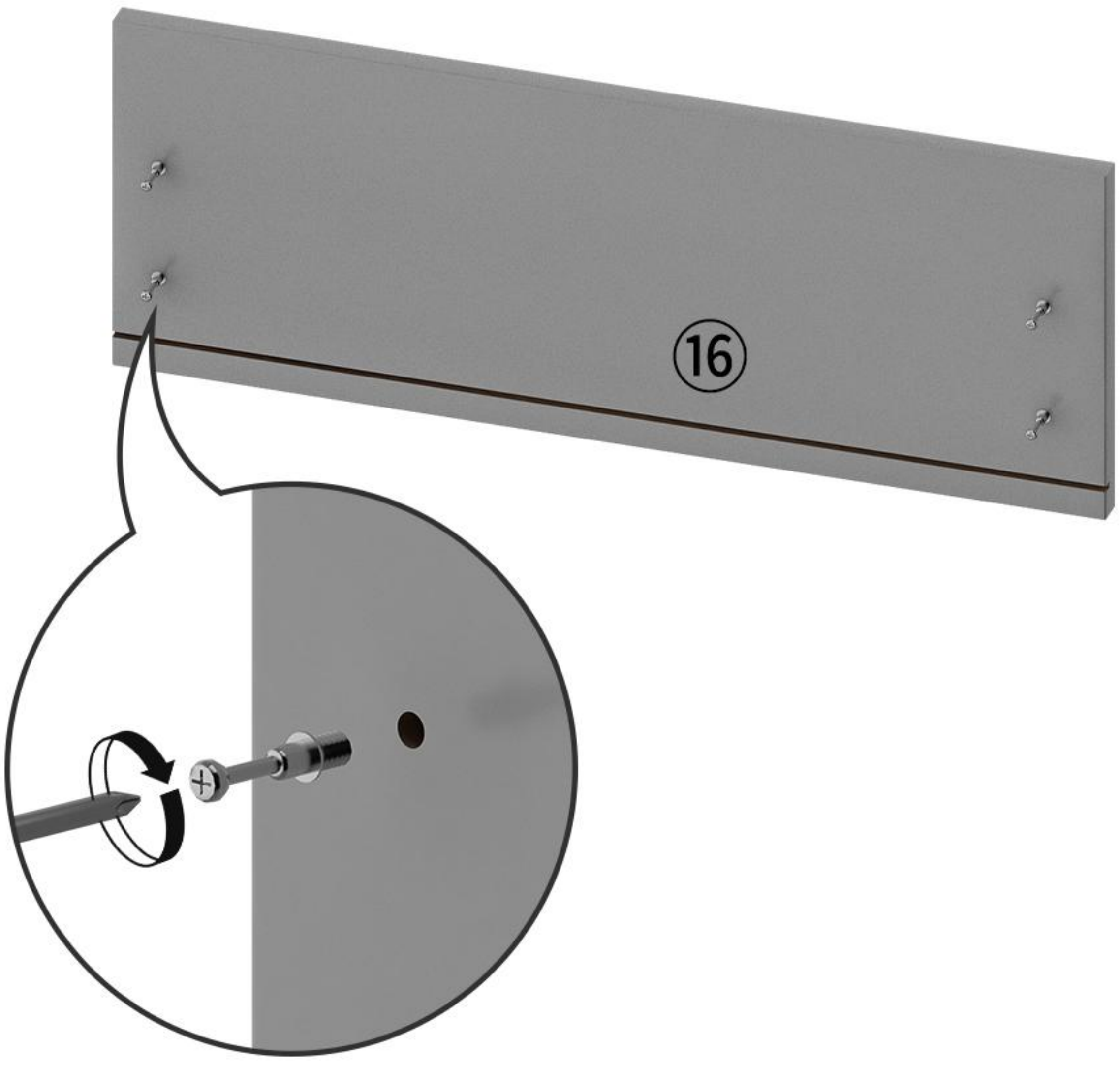
Product Split Diagram



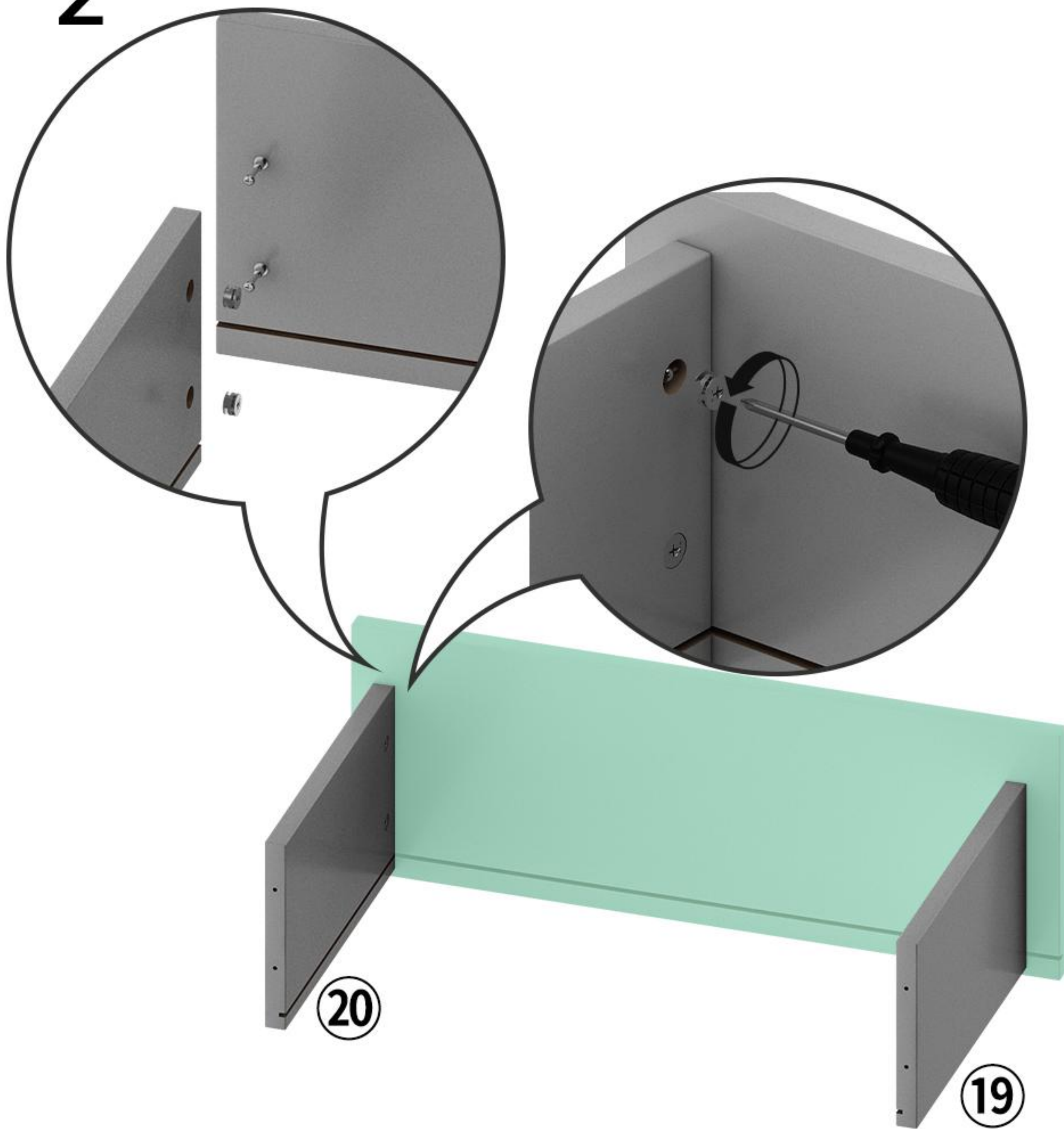
Installation method of eccentric screw



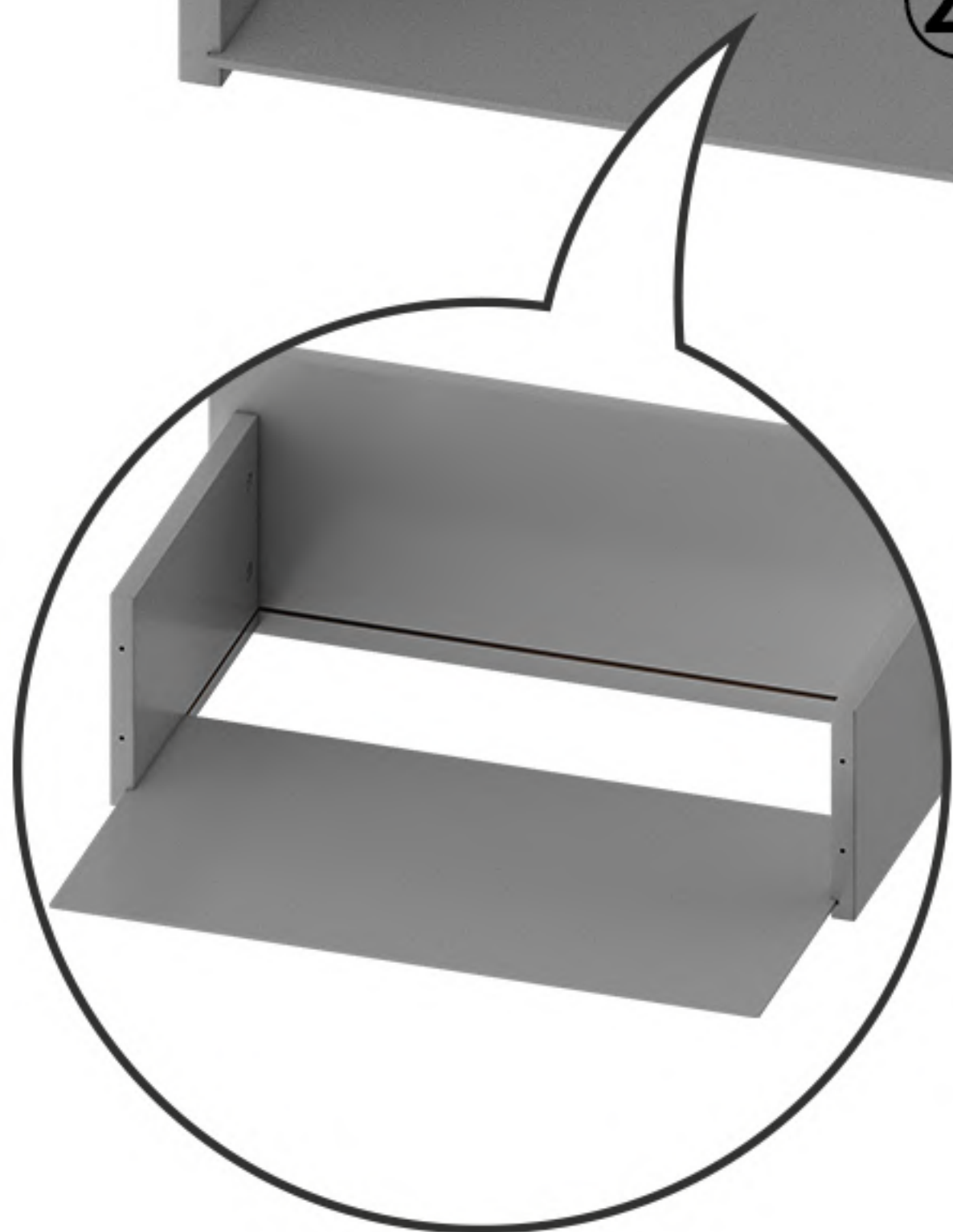
1



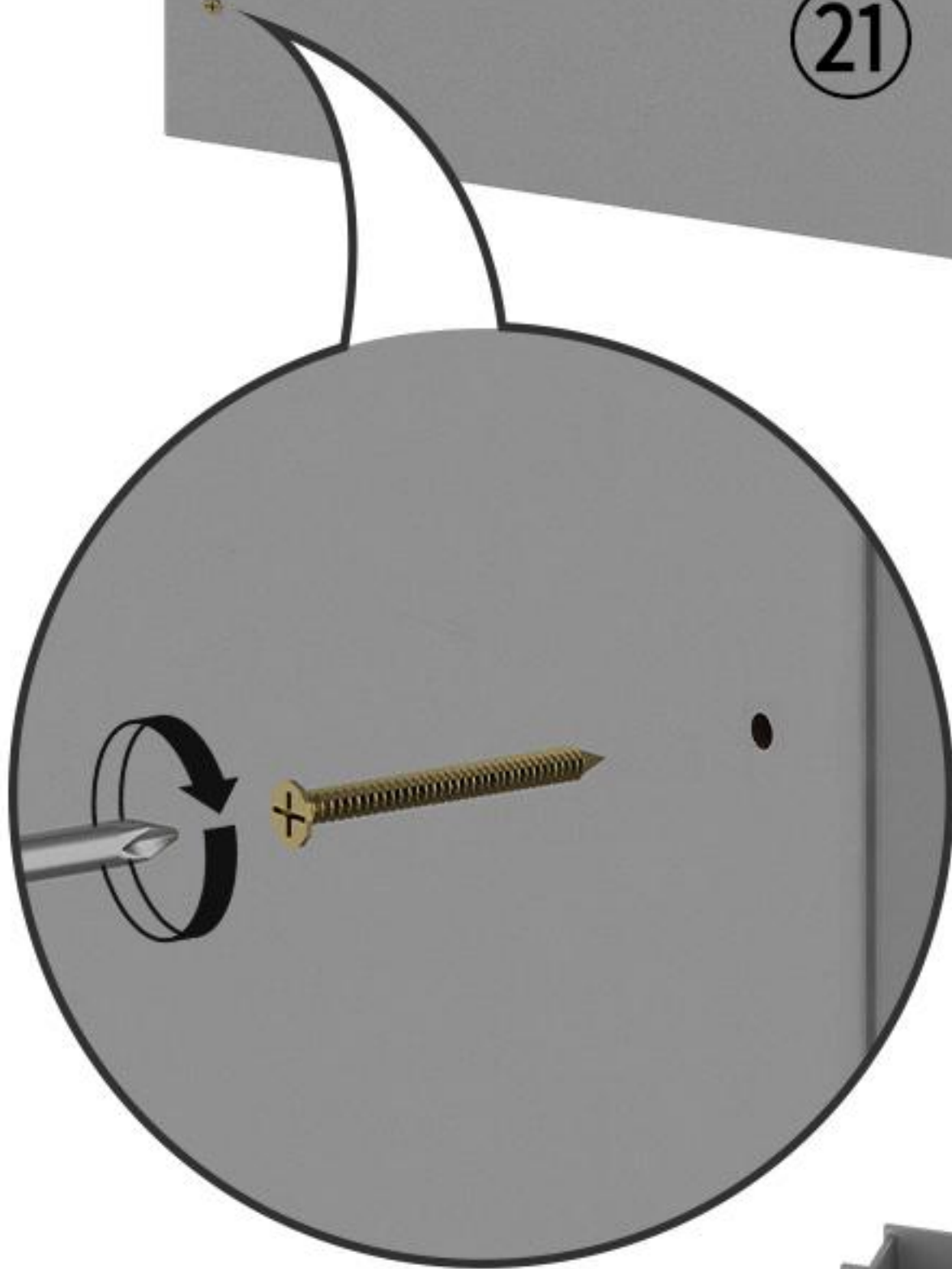
2



3



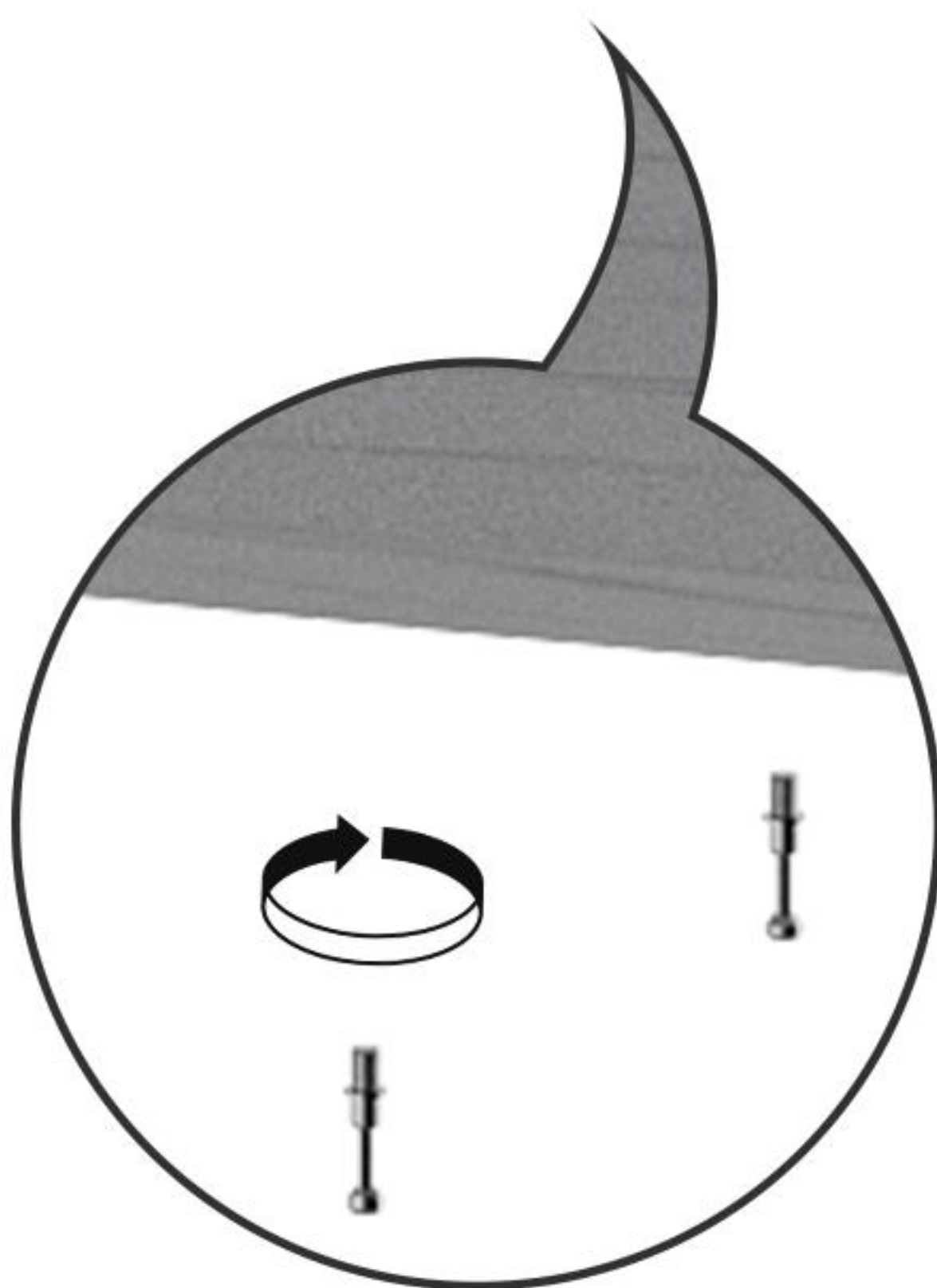
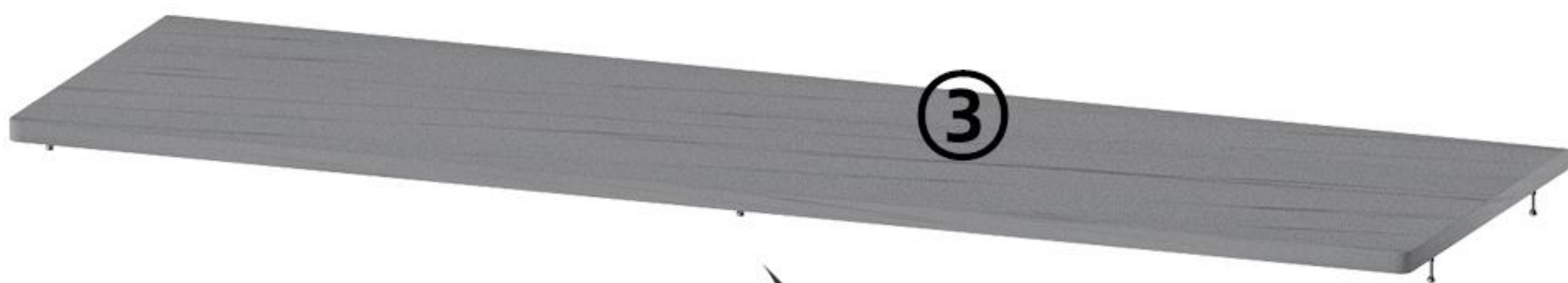
4



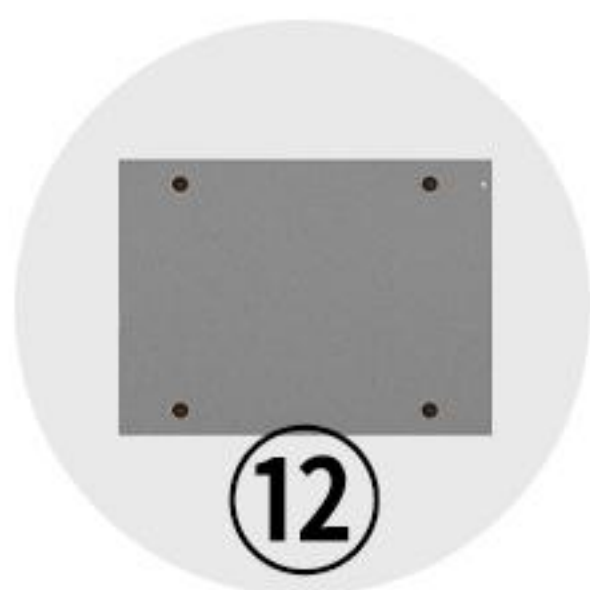
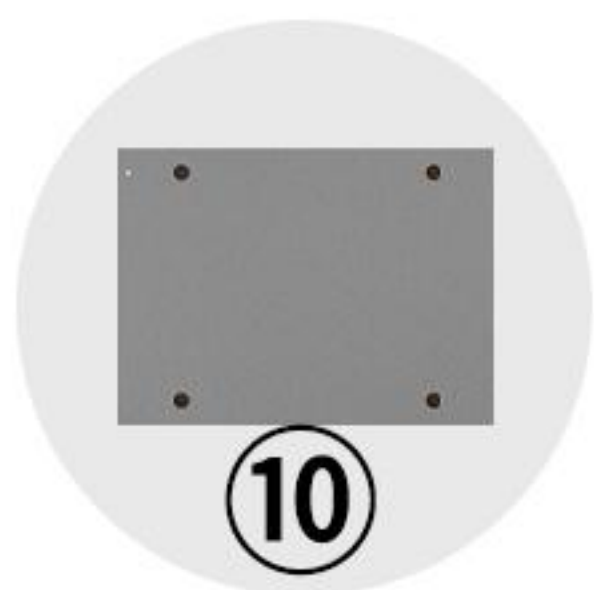
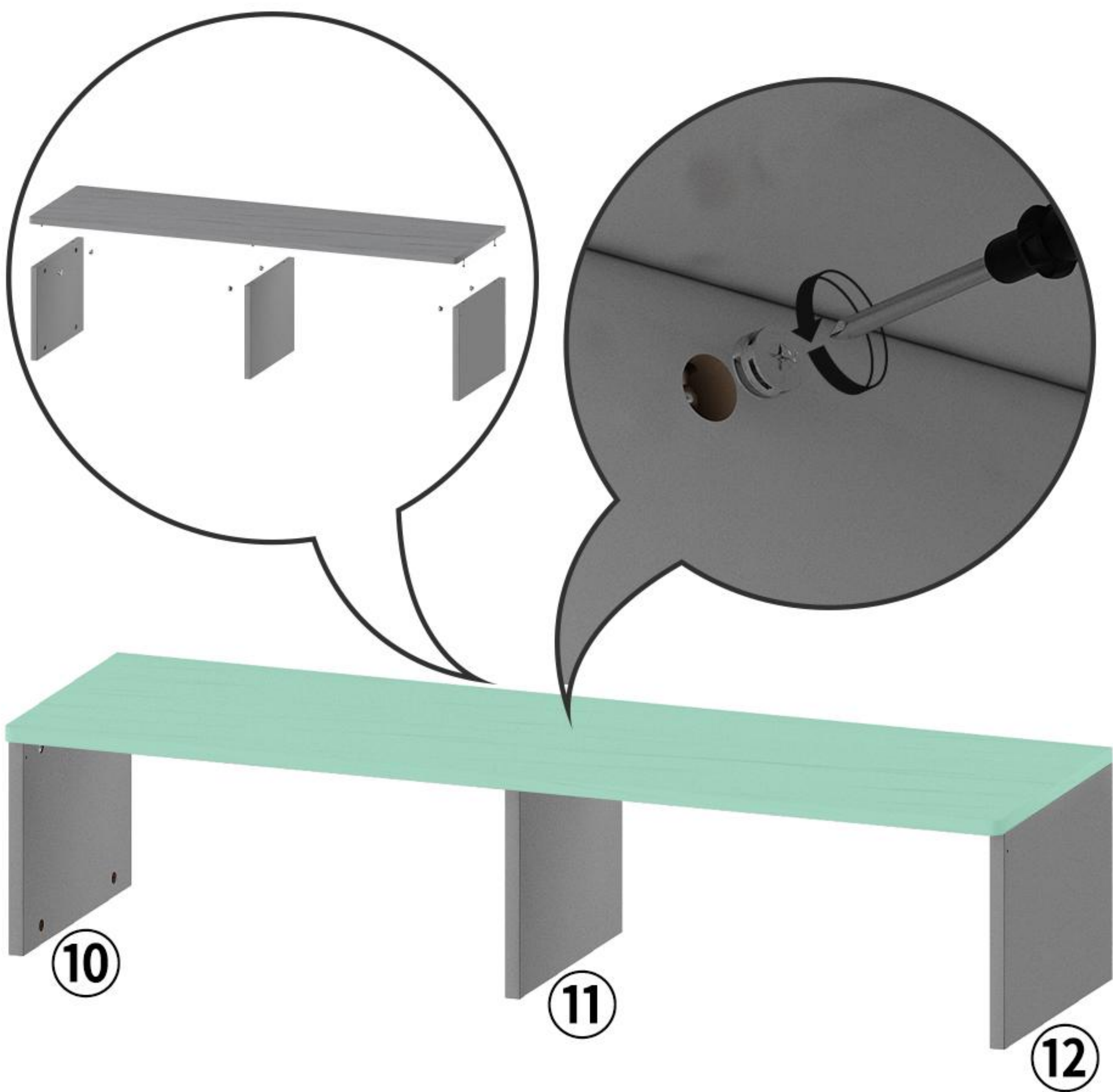
The four drawers are installed in the same way. Refer to the product breakdown diagram for installation.



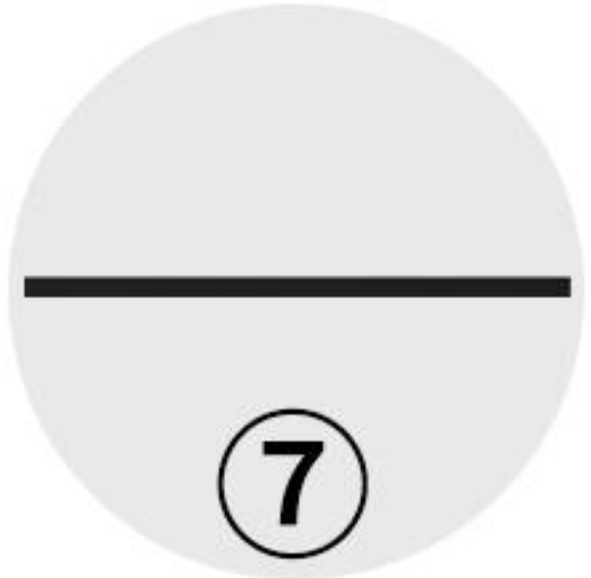
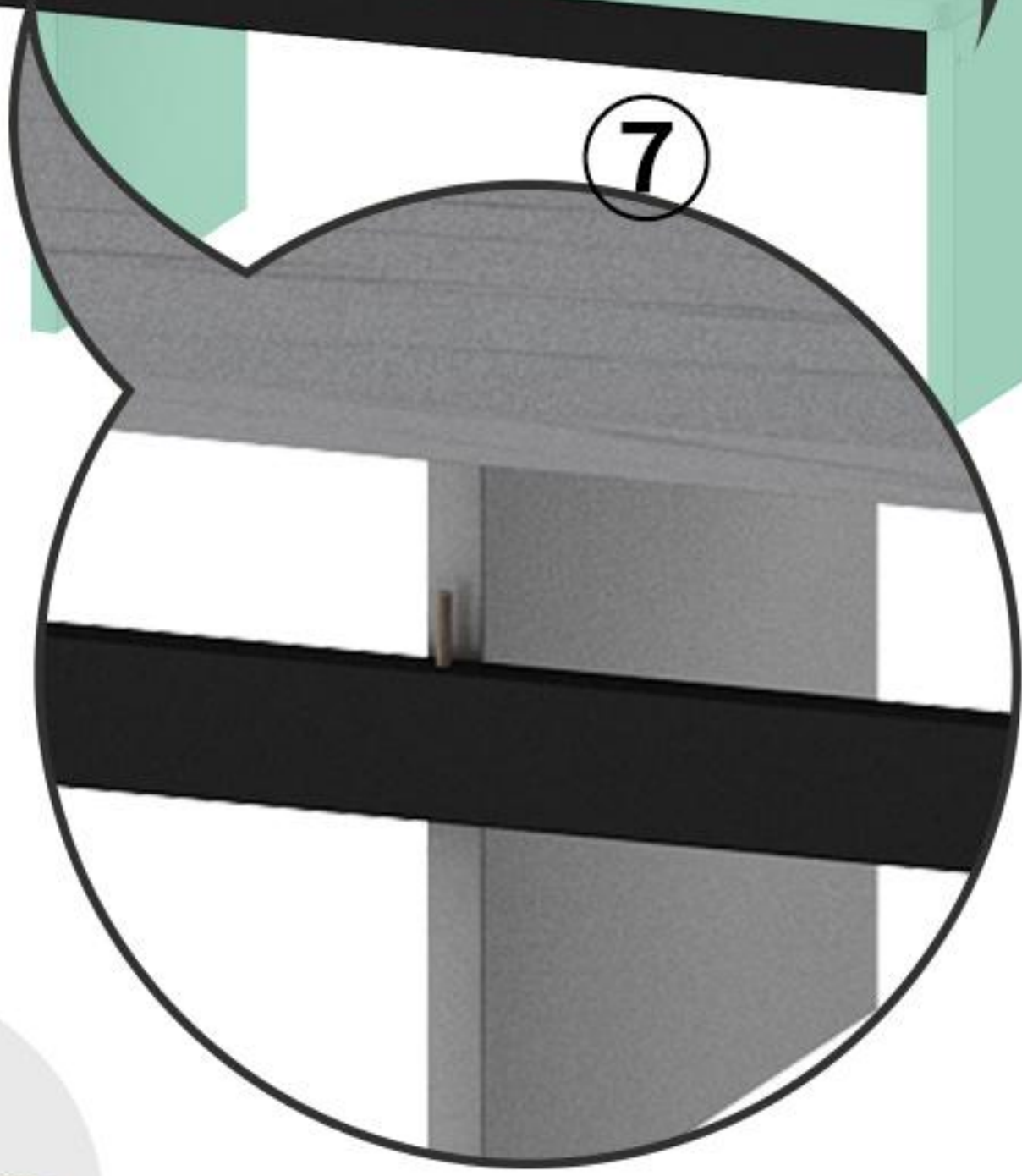
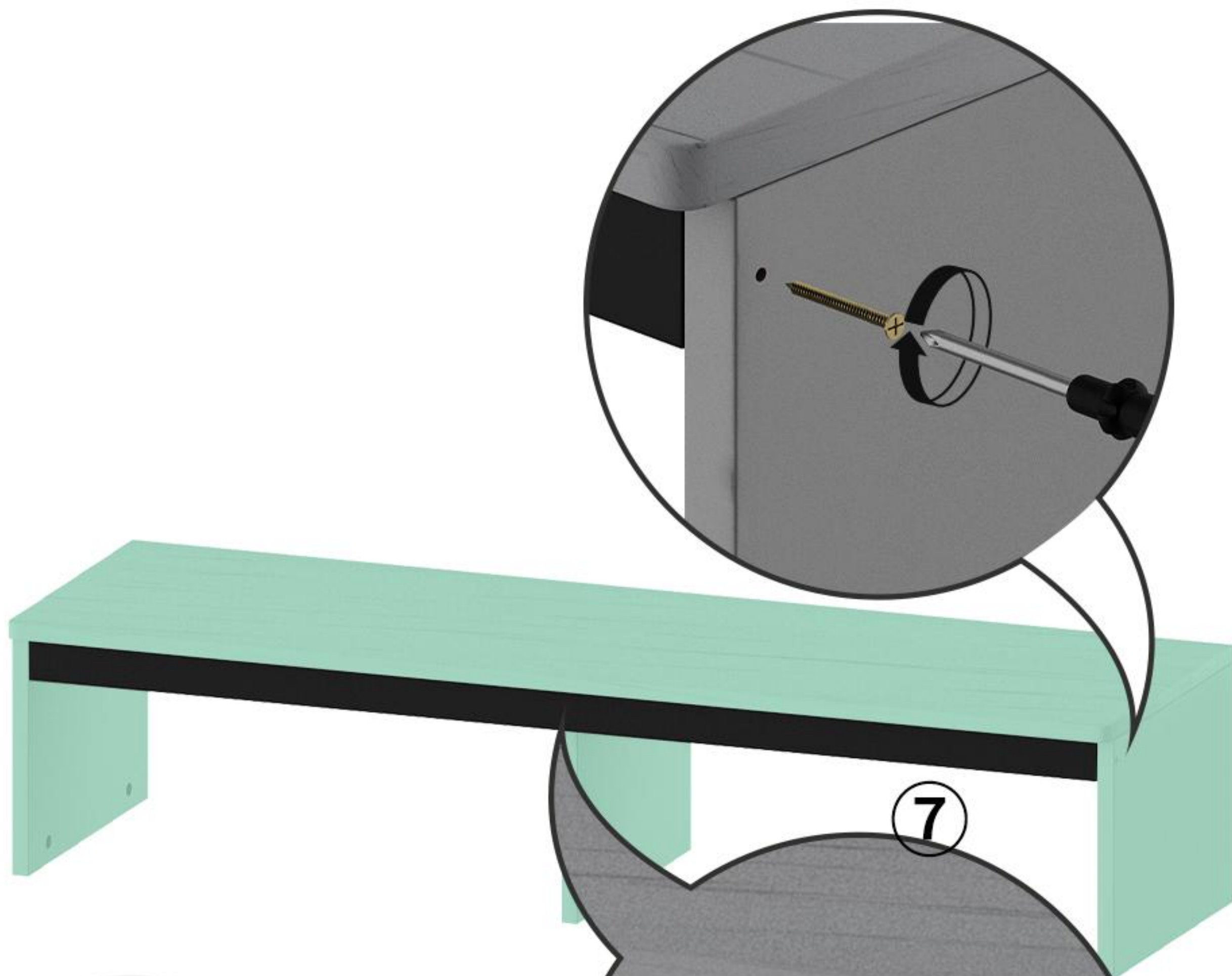
5



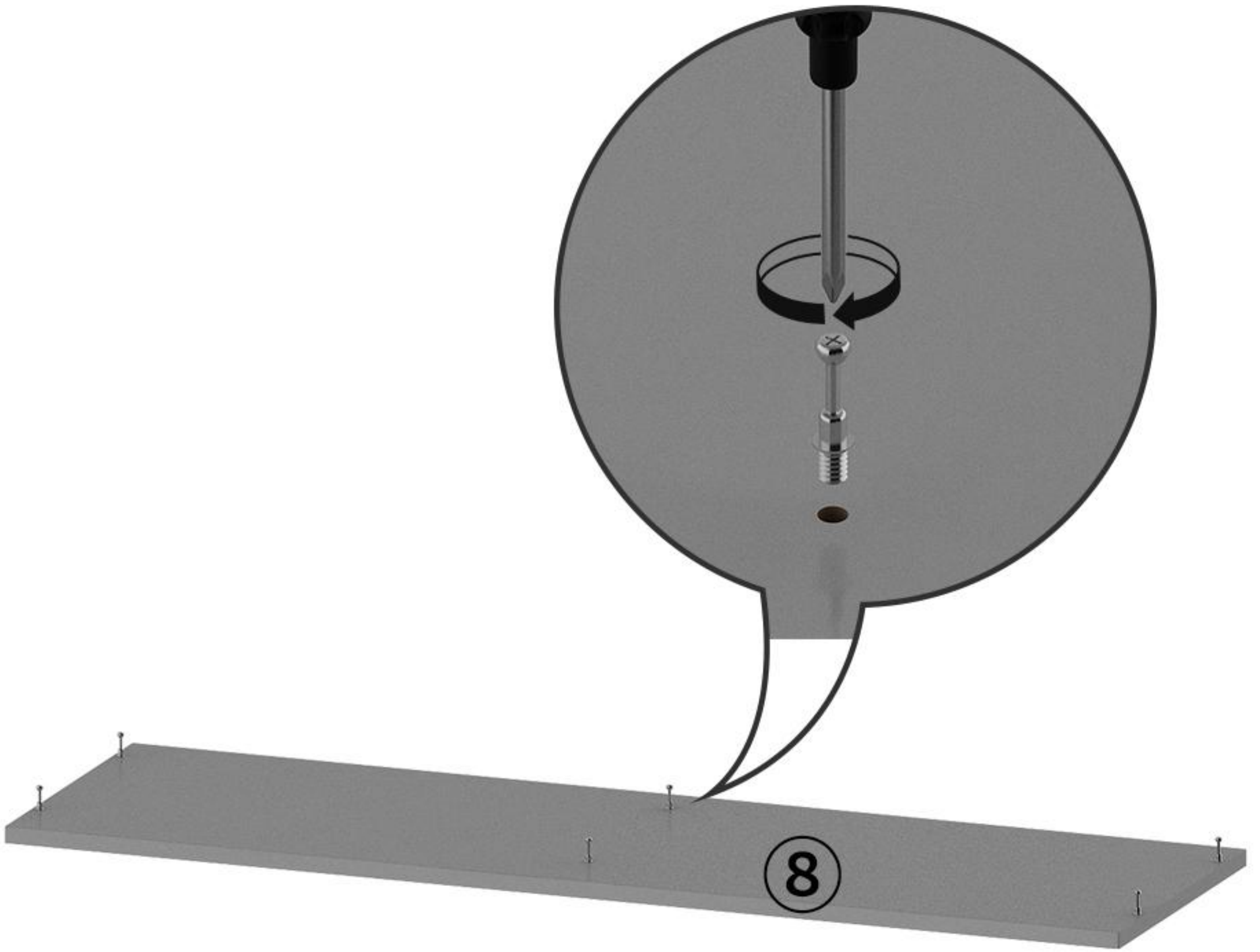
6



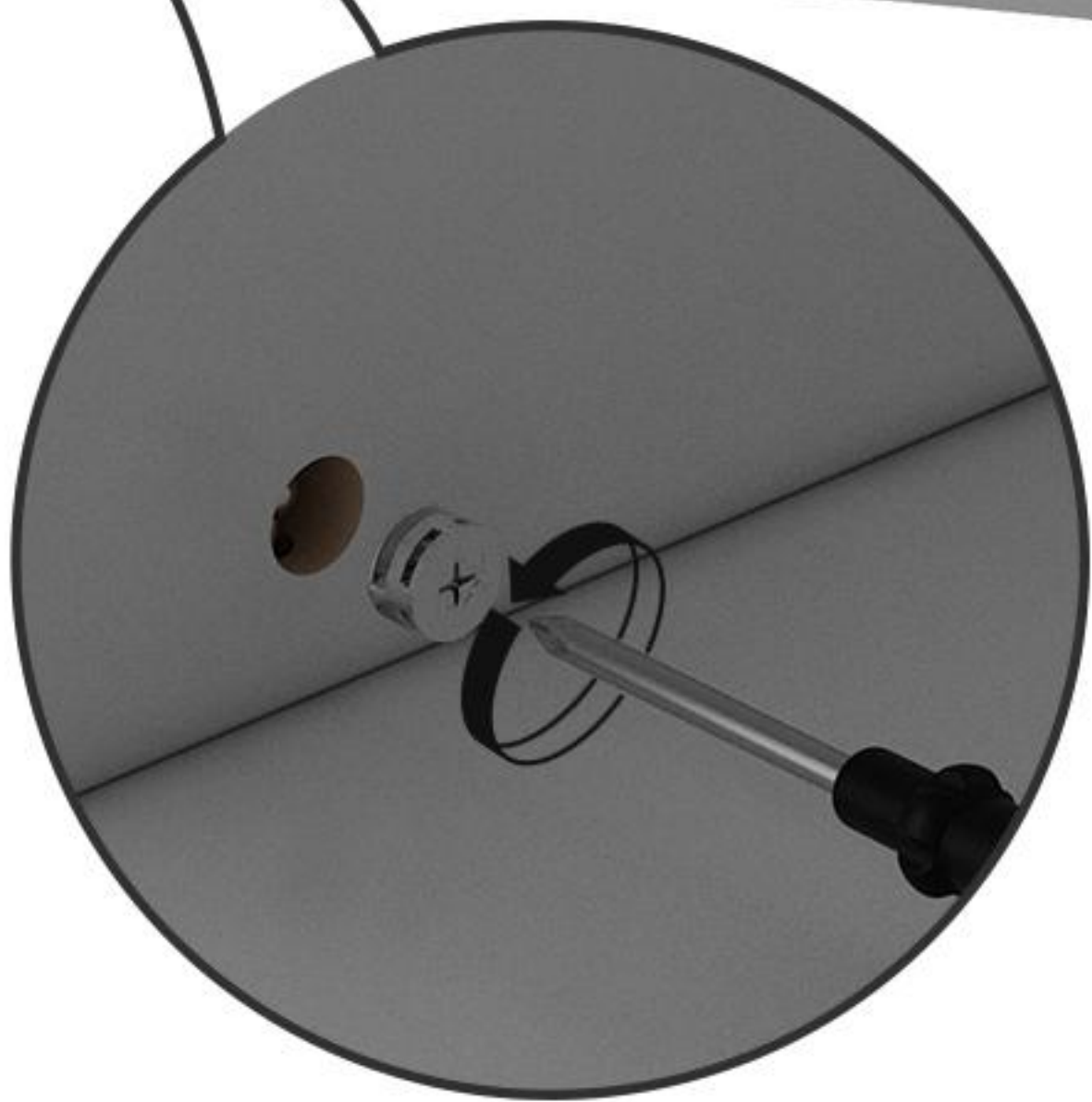
7



8



9

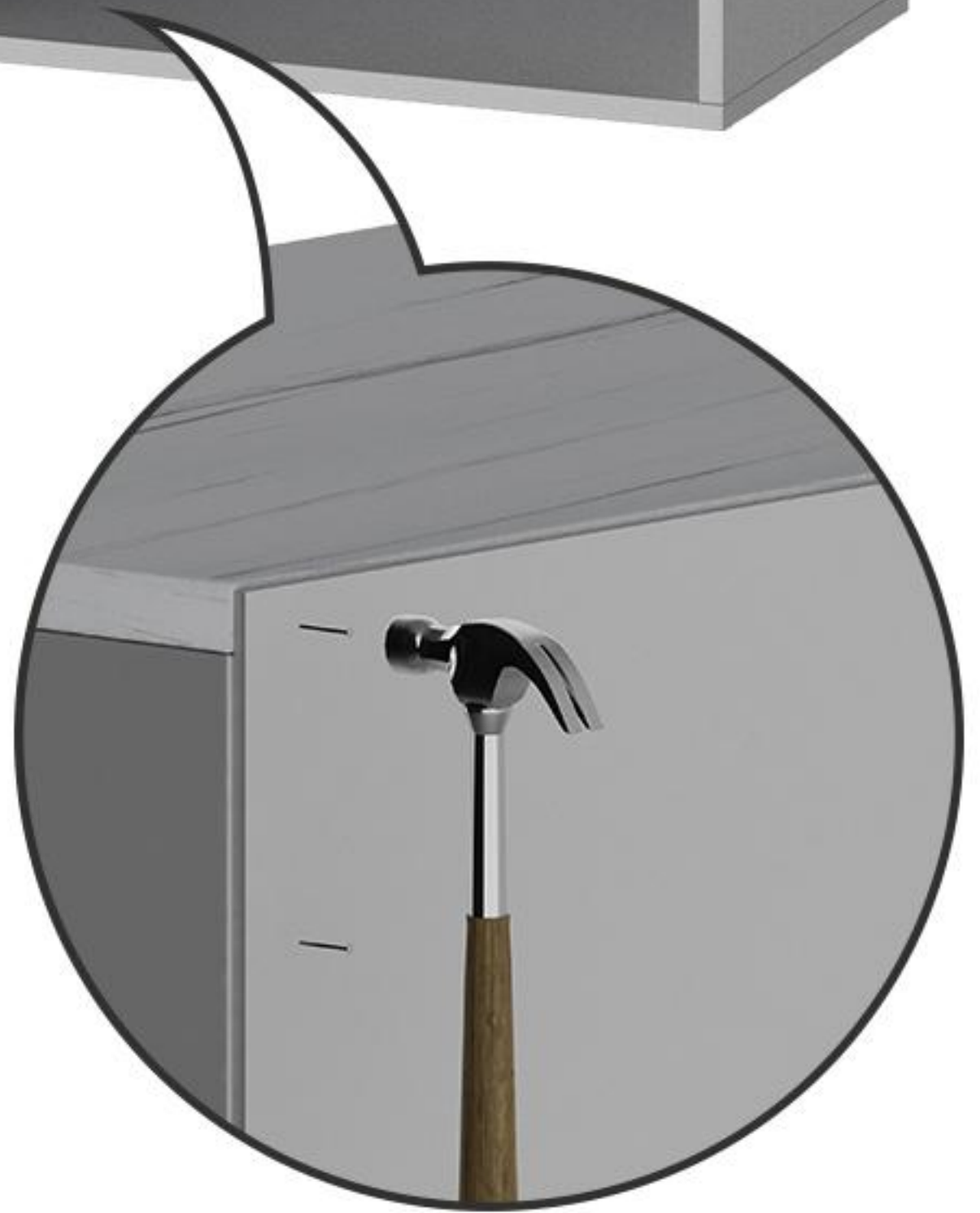
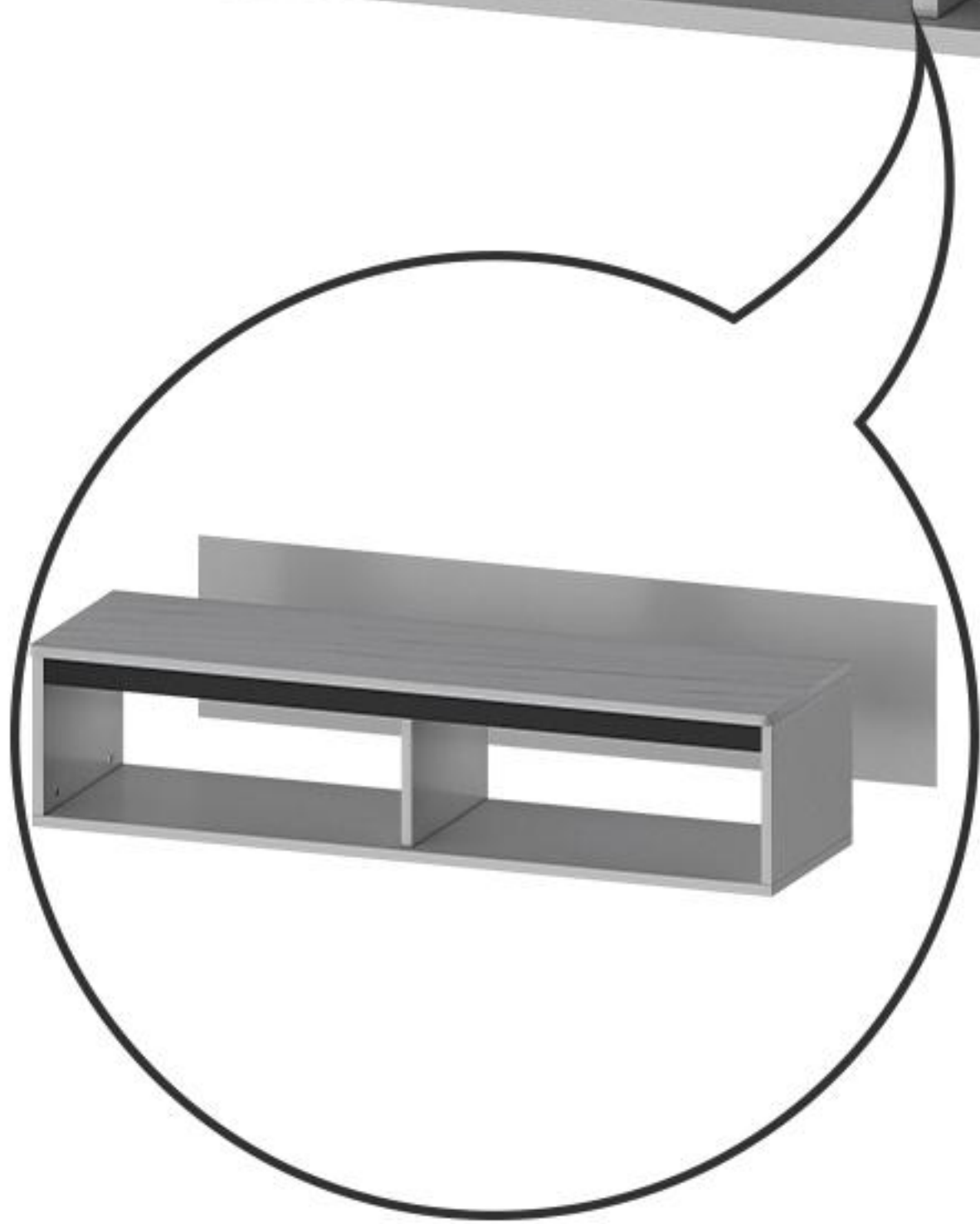
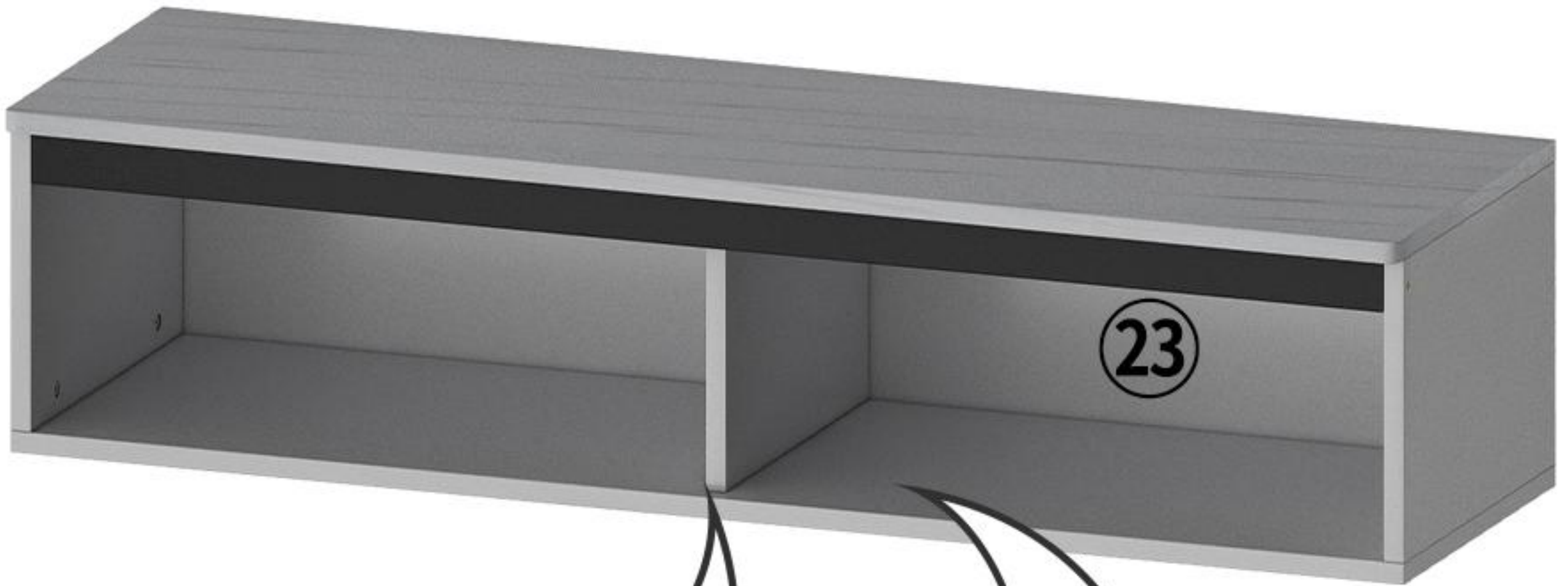


8



D0

10



11

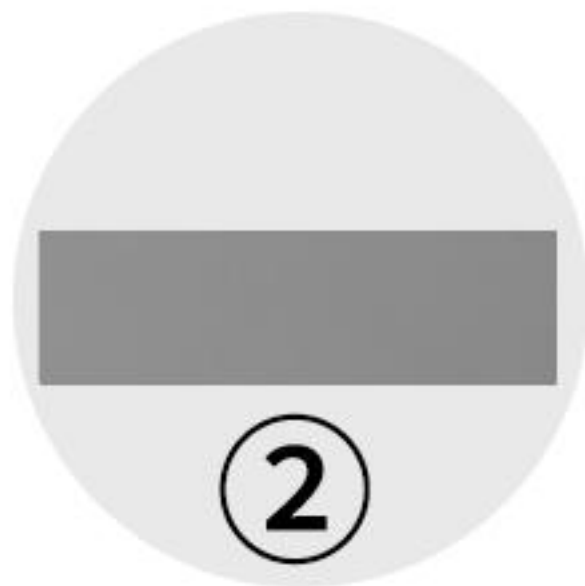
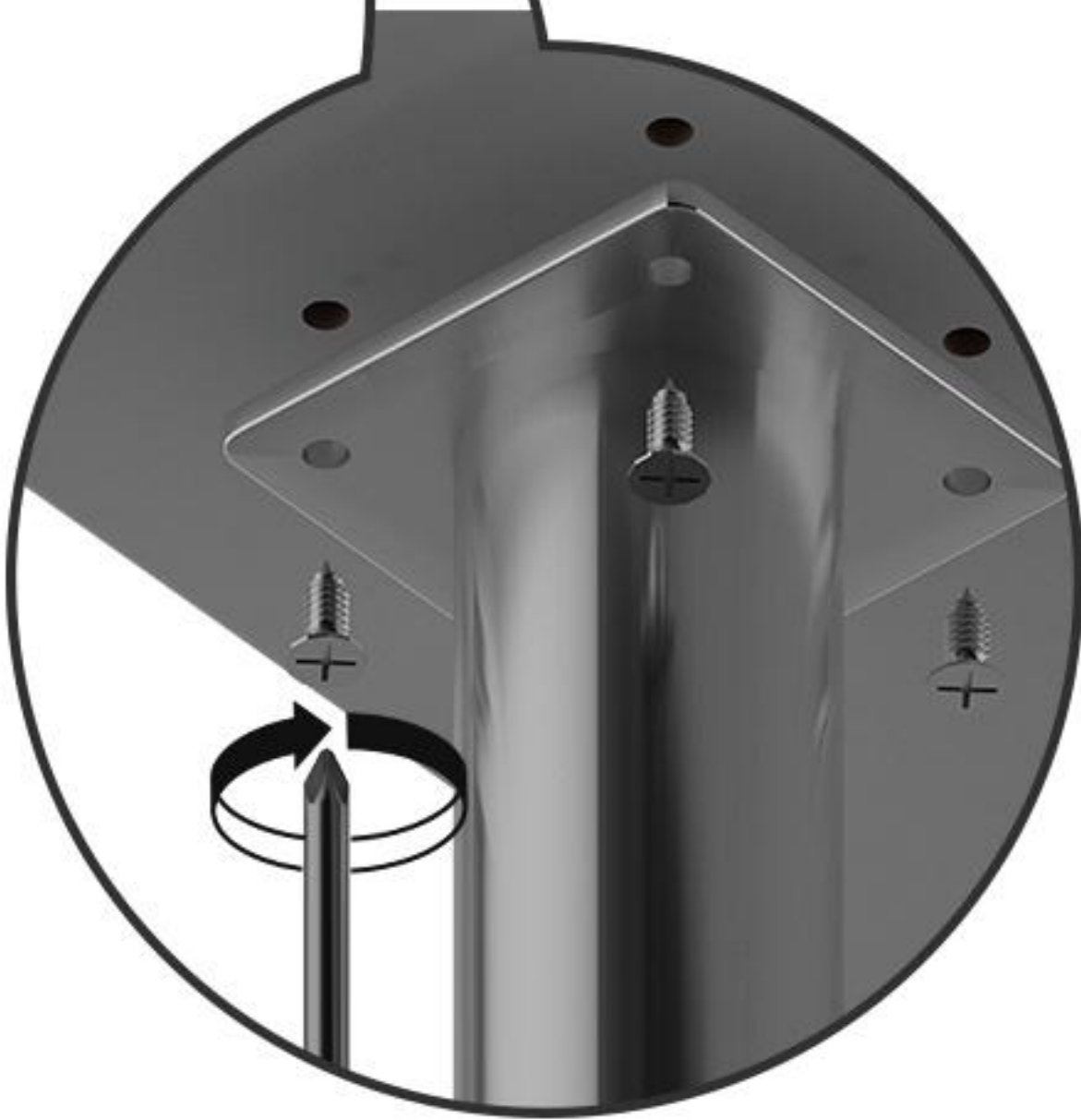
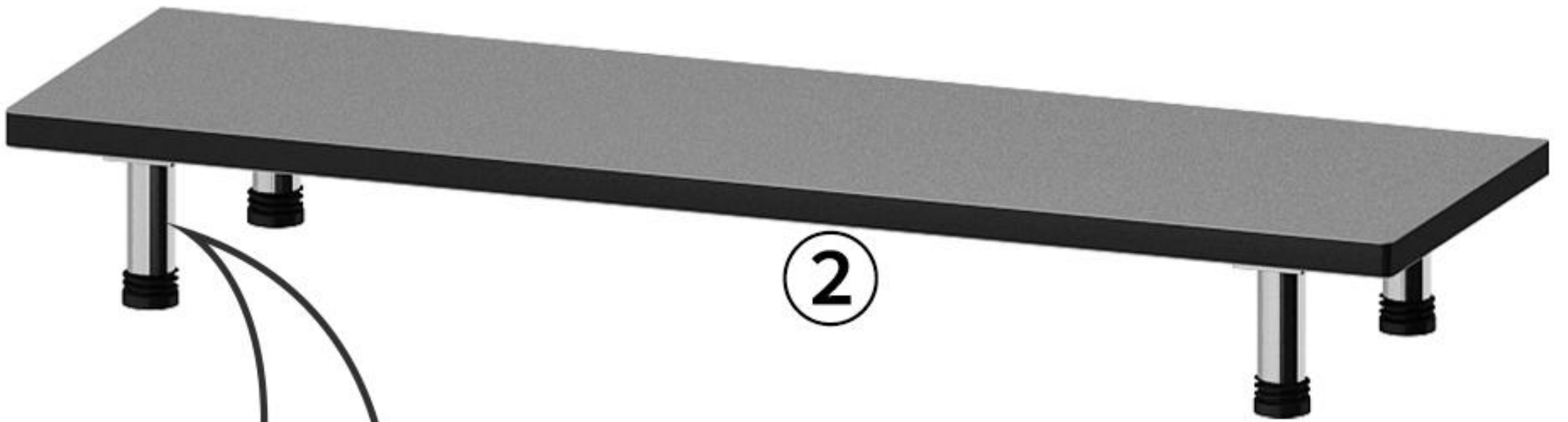


12

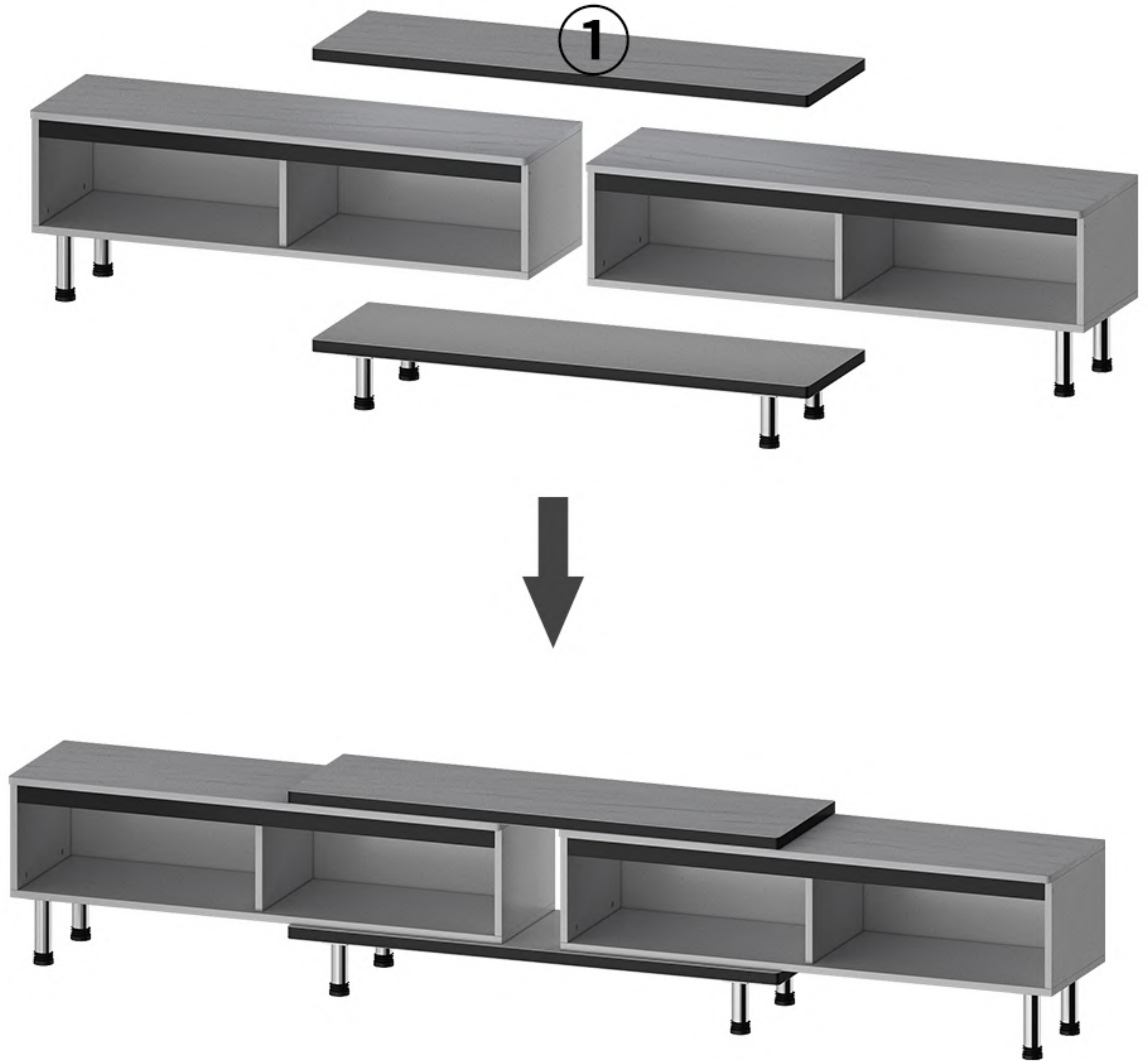


The other cabinet is installed in the same way. Refer to the product breakdown diagram for installation.

13



14



15

