



SOCE017 60CM Installation Instruction

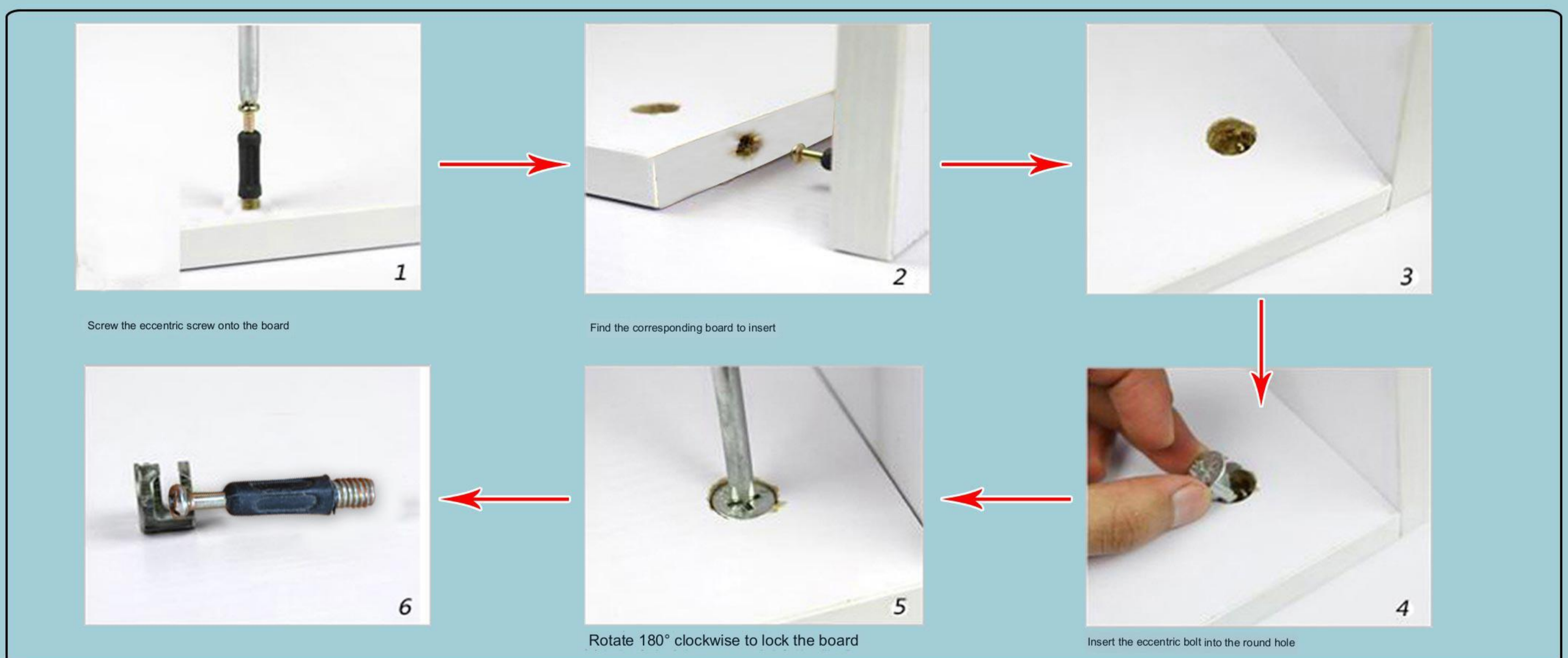
								
Eccentric screw	Eccentric Bolt	3.5CM self-tapping screw	metal pin	Spring pin	Min. self-tapping screw	air hole	small nail	3CM flat head screw
A*6	B*6	C*35	D*12	E*2	F*10	G*1	H*30	I*4

Kind tips:

Tighten it when you're all done!

Eccentric installation principle:

	
rebounder	Iron sheets
K*2	L*2



1 Screw the eccentric screw onto the board

2 Find the corresponding board to insert

3

4 Insert the eccentric bolt into the round hole

5 Rotate 180° clockwise to lock the board

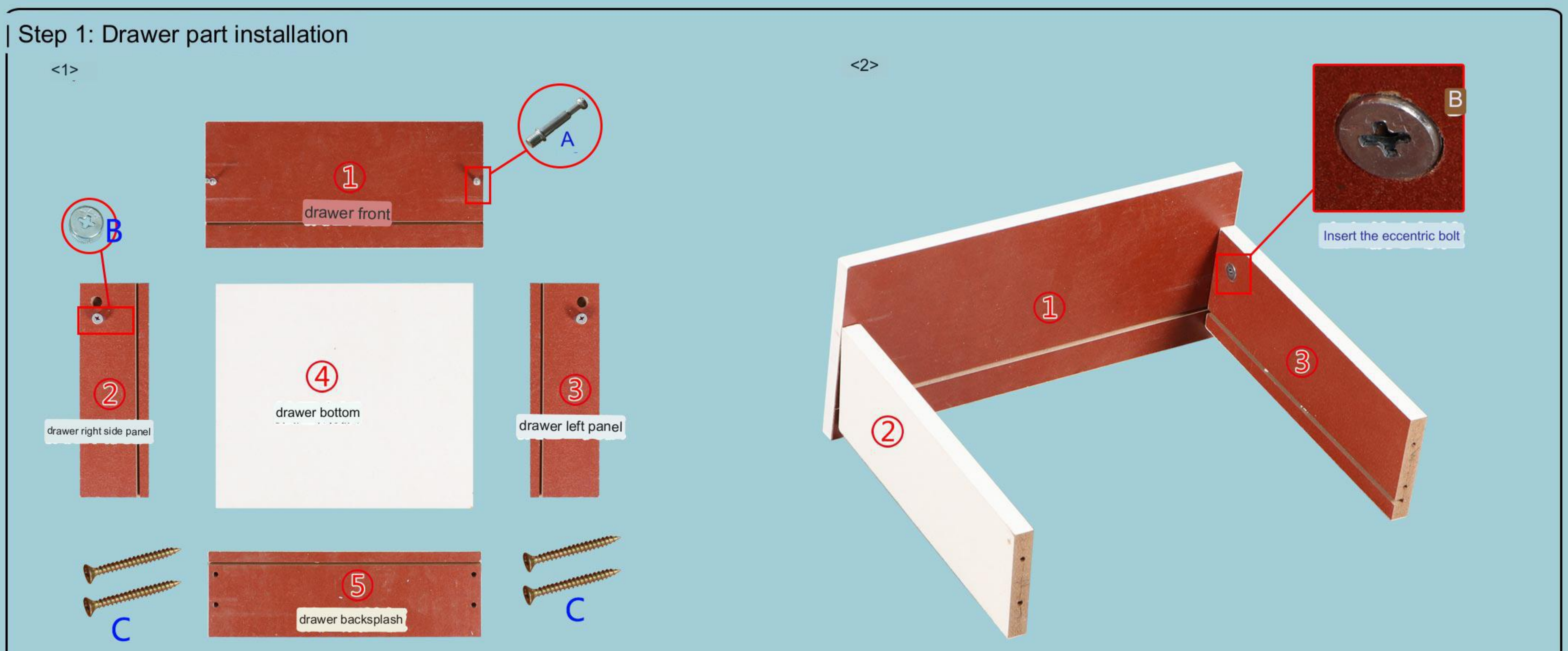
6

installation steps:

Step 1: Drawer part installation

<1>

<2>



1 drawer front

2 drawer right side panel

3 drawer left panel

4 drawer bottom

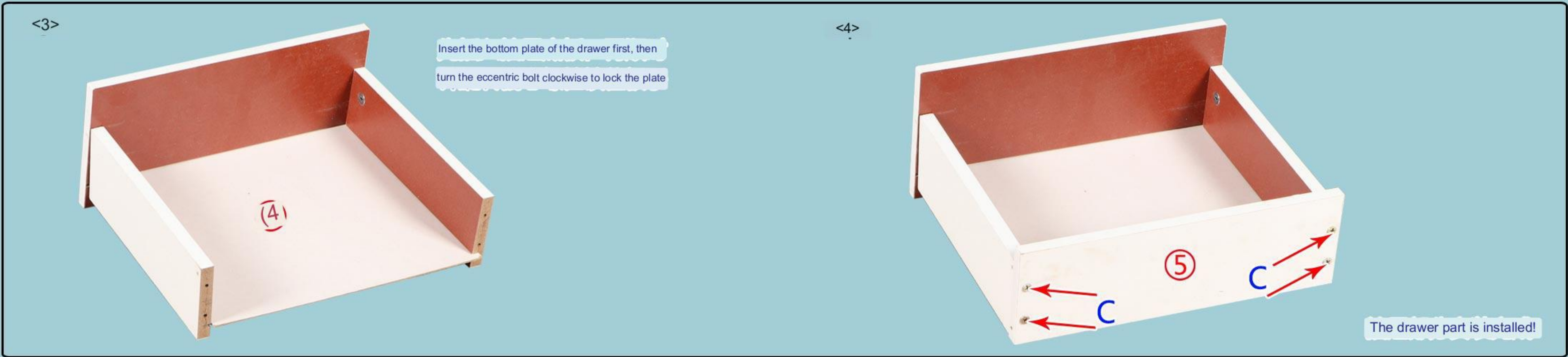
5 drawer backplash

A

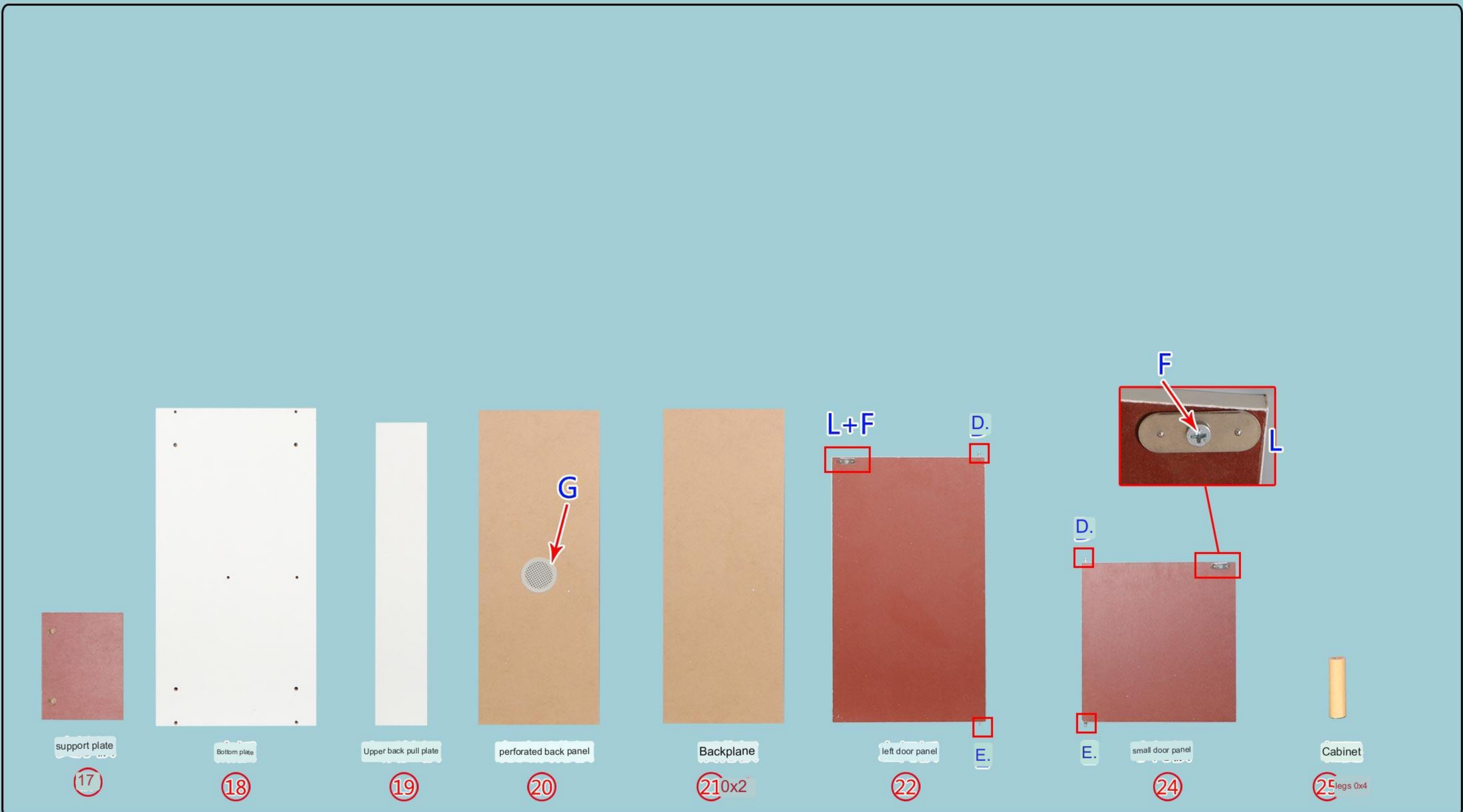
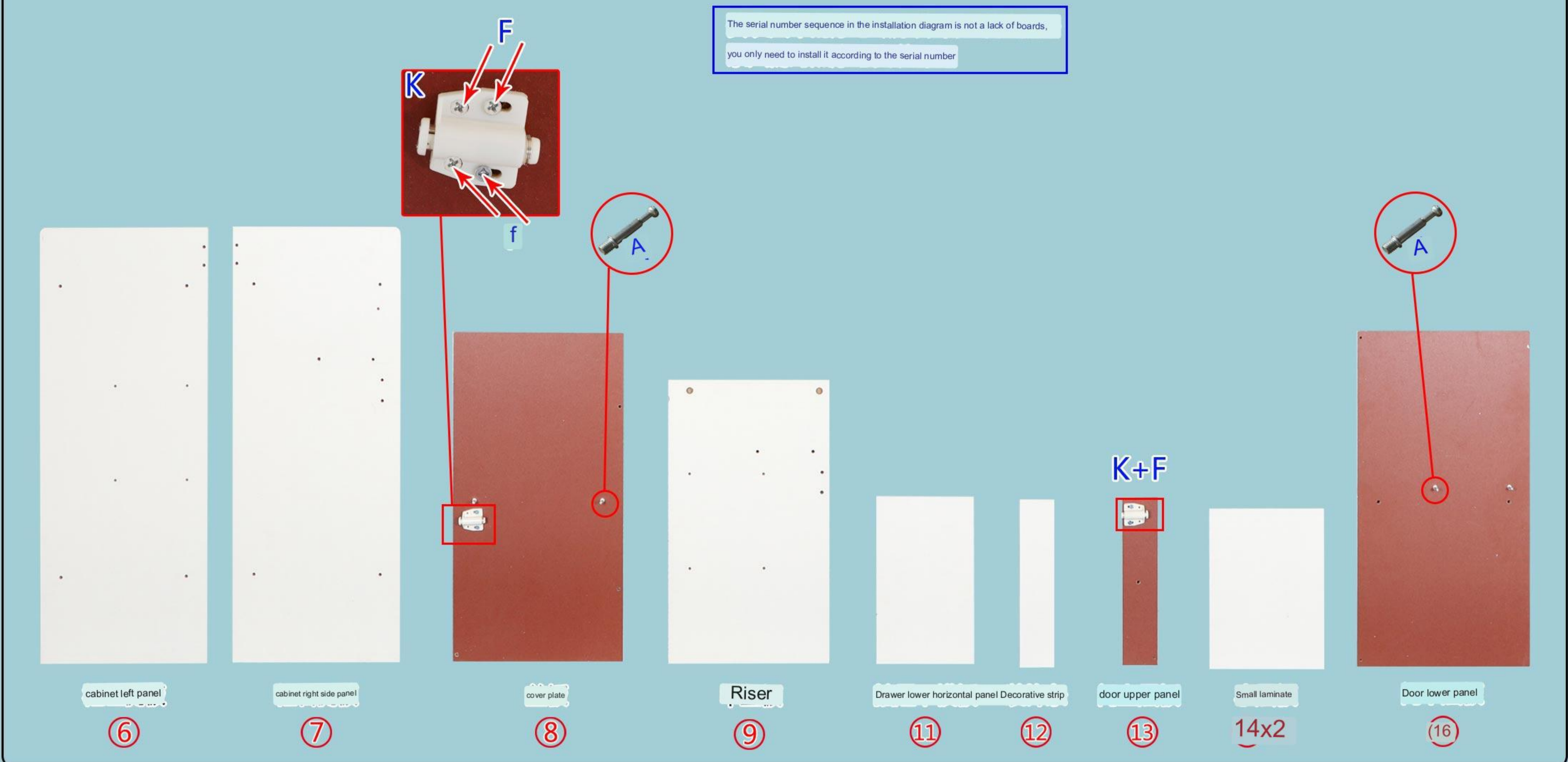
B

C

Insert the eccentric bolt

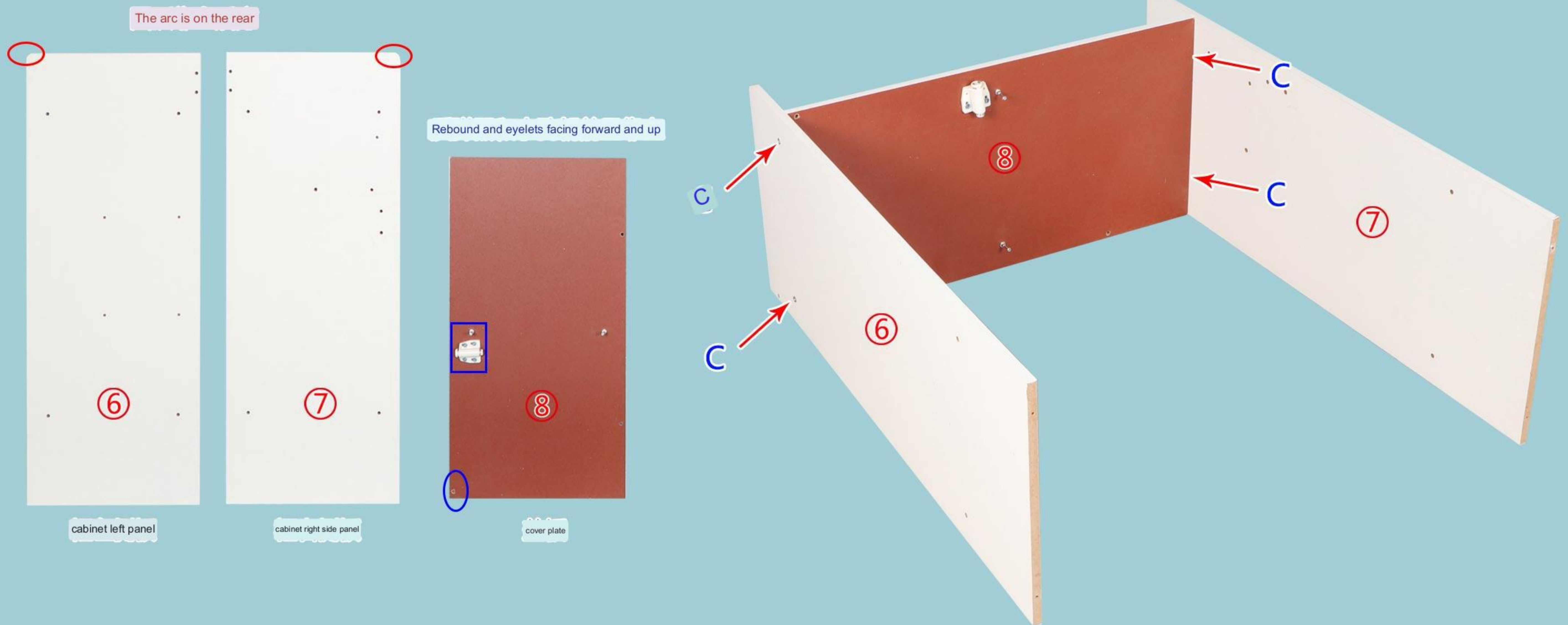


Board name and serial number:

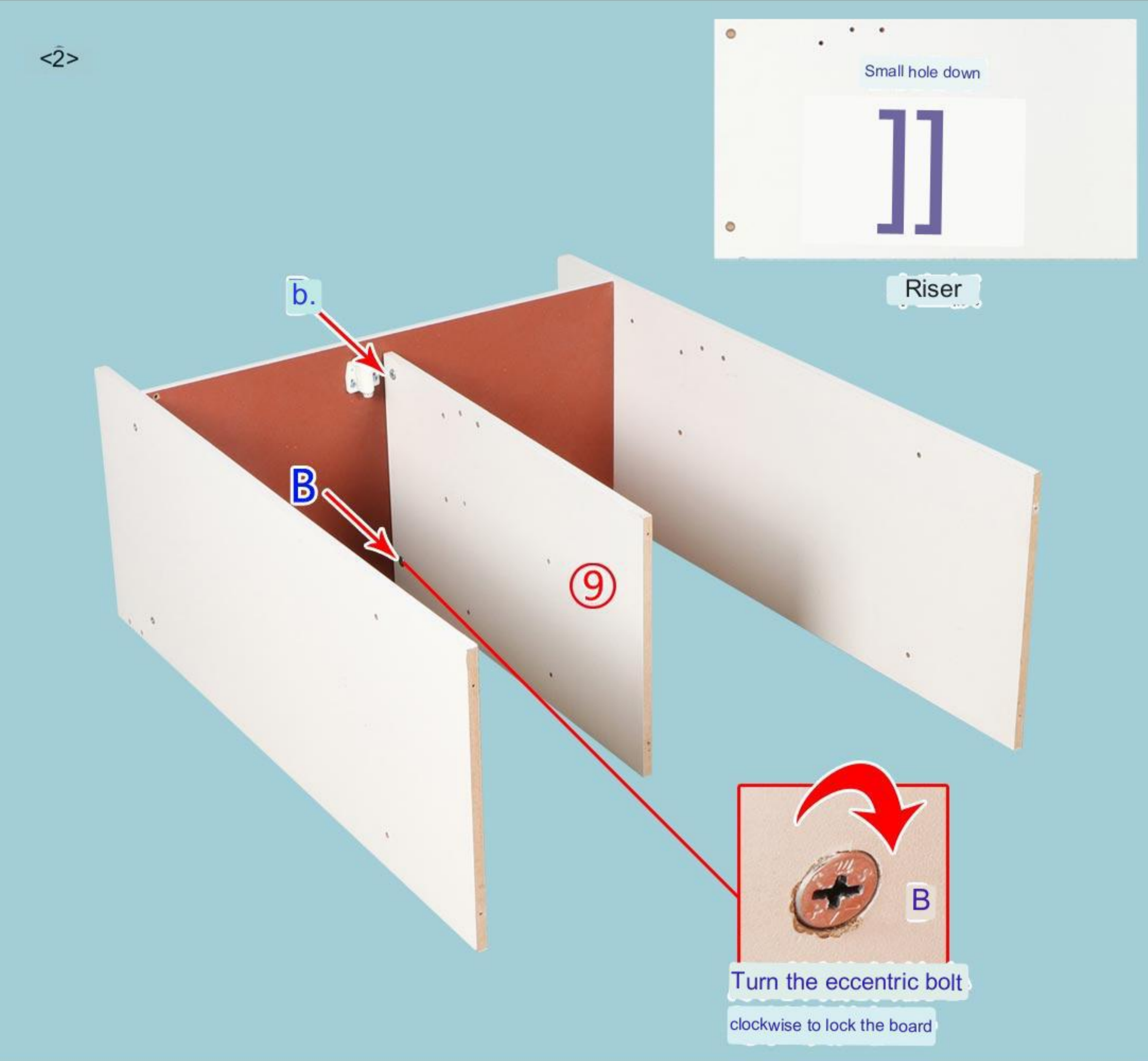


Step 2: Whole Parts Installation

<1>



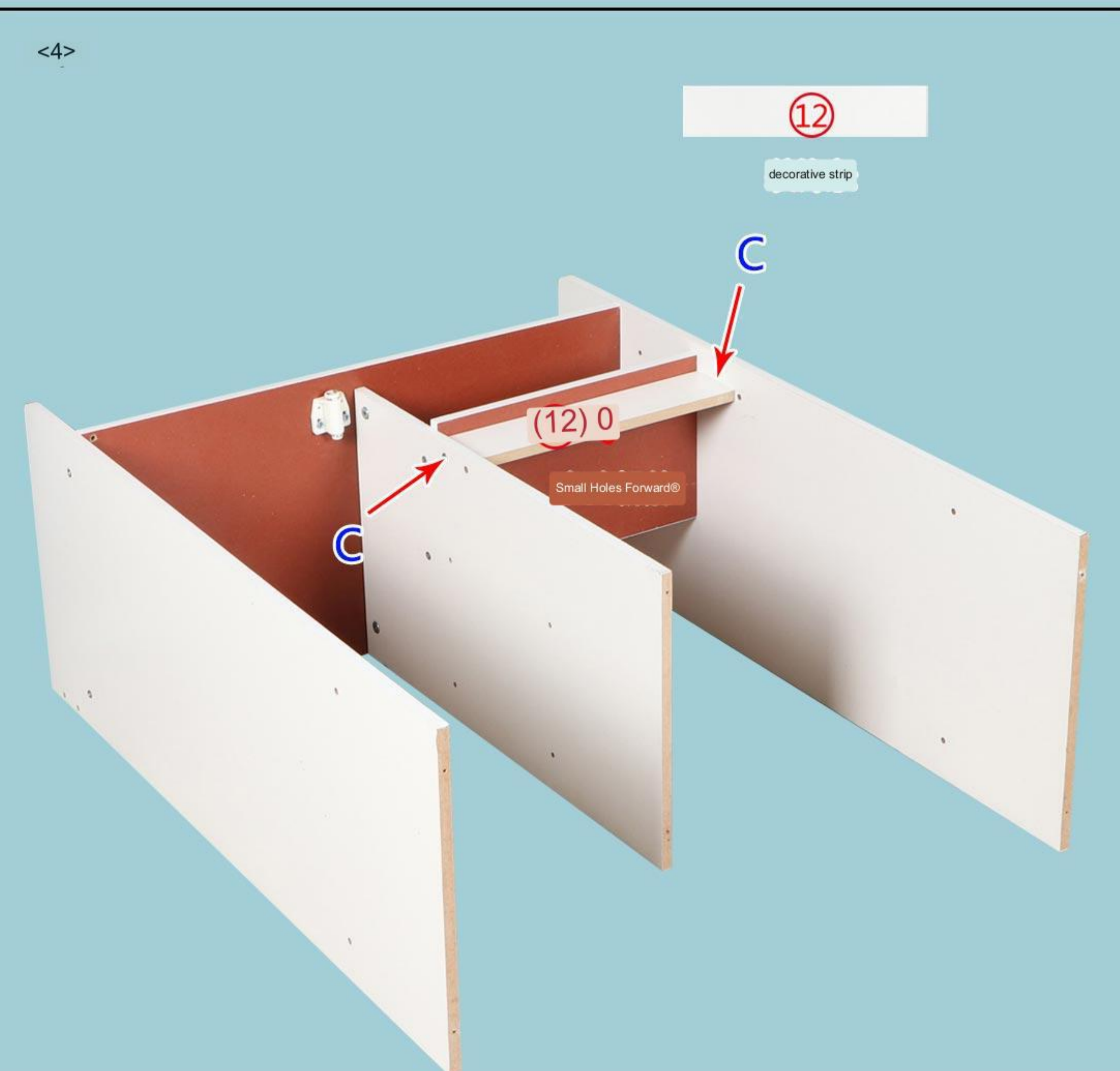
<2>



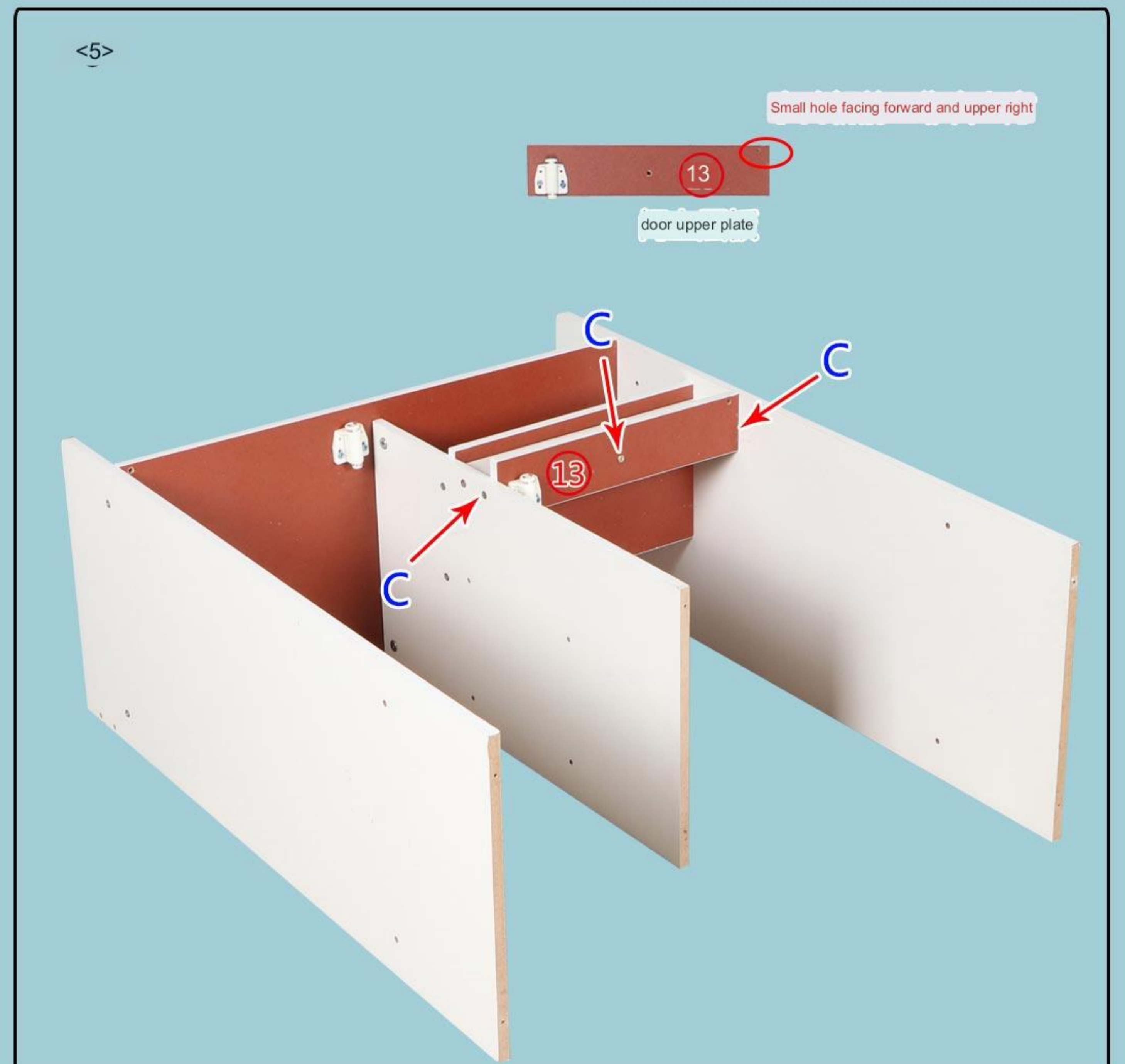
<3>

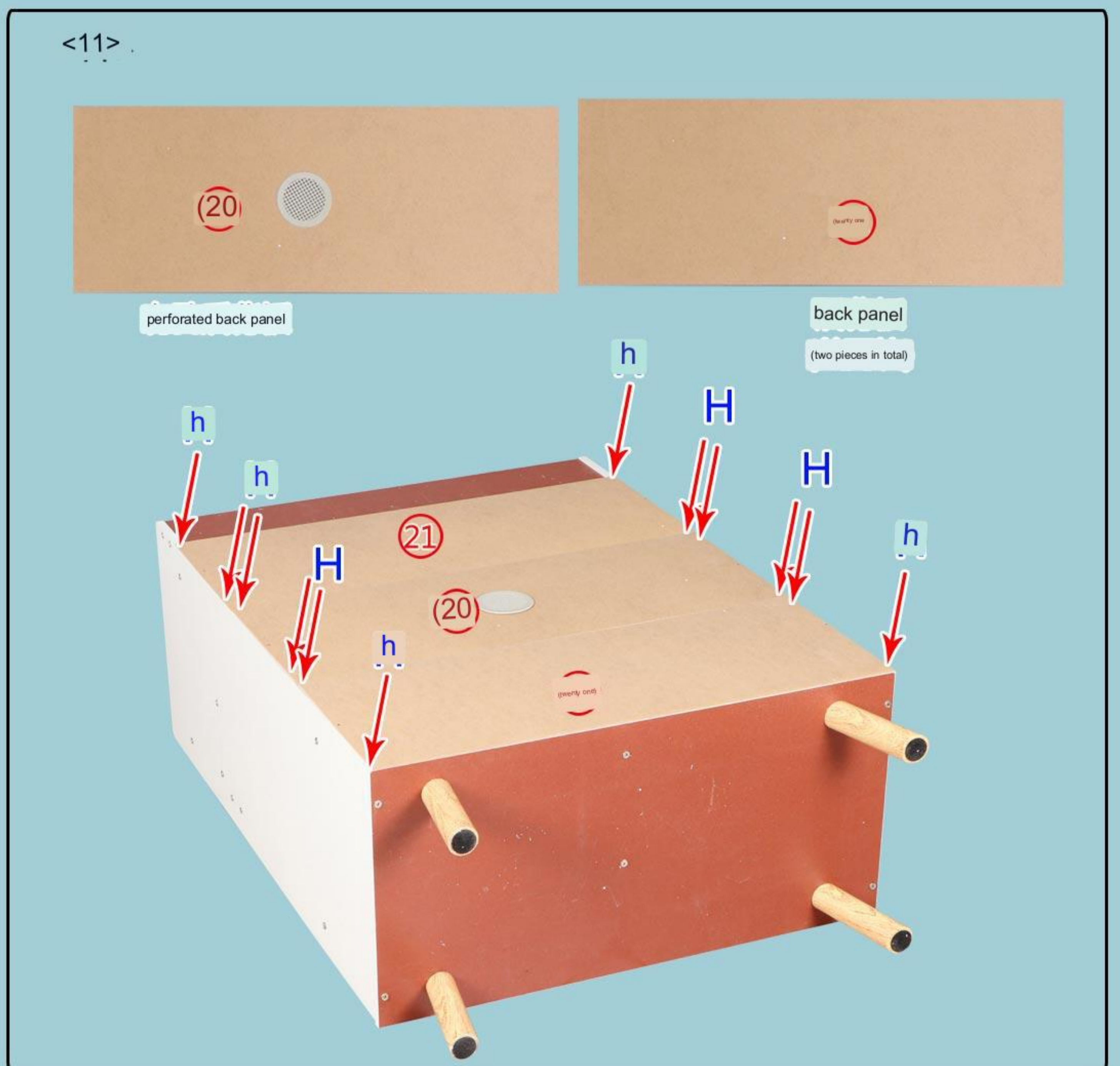
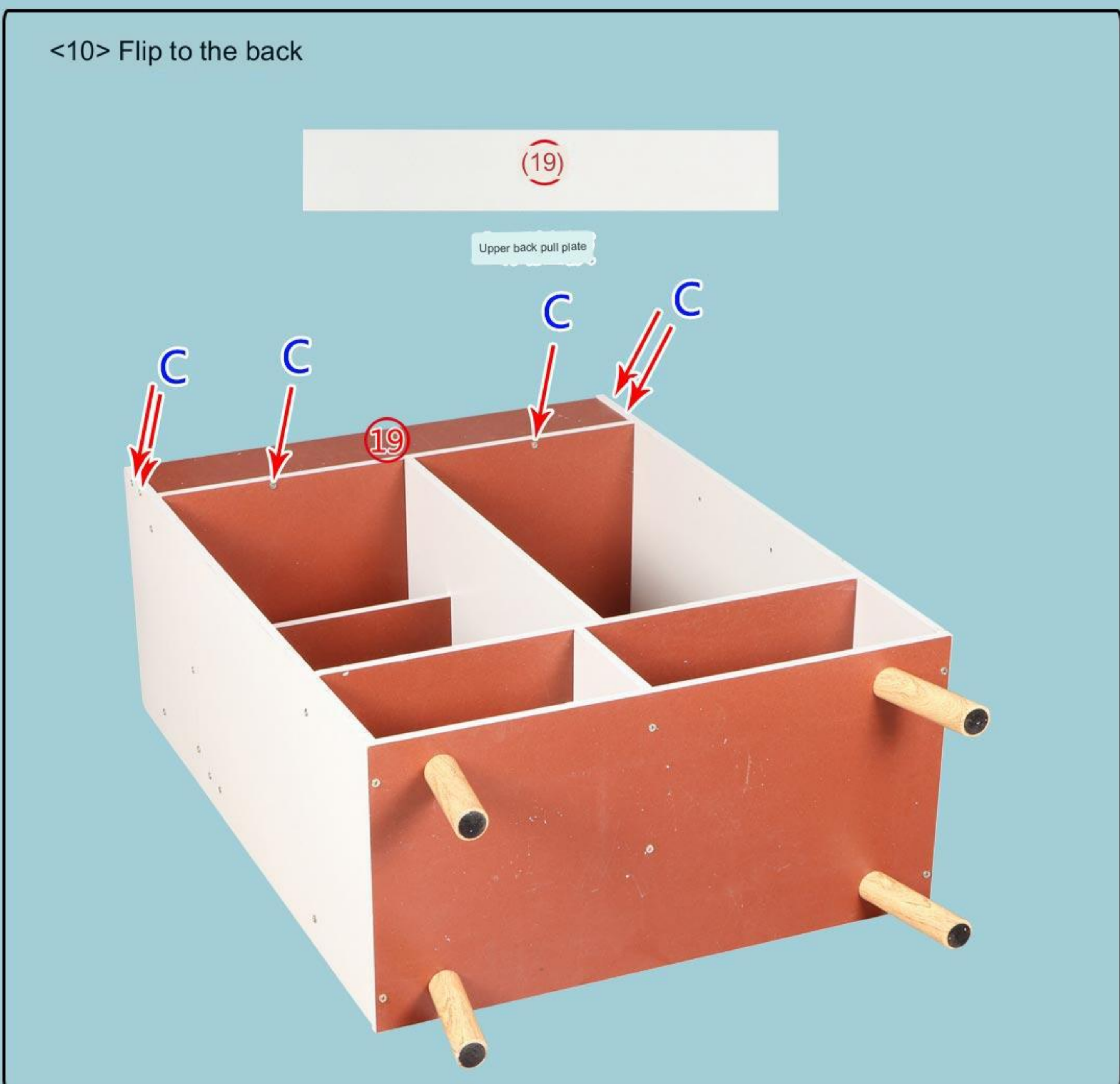
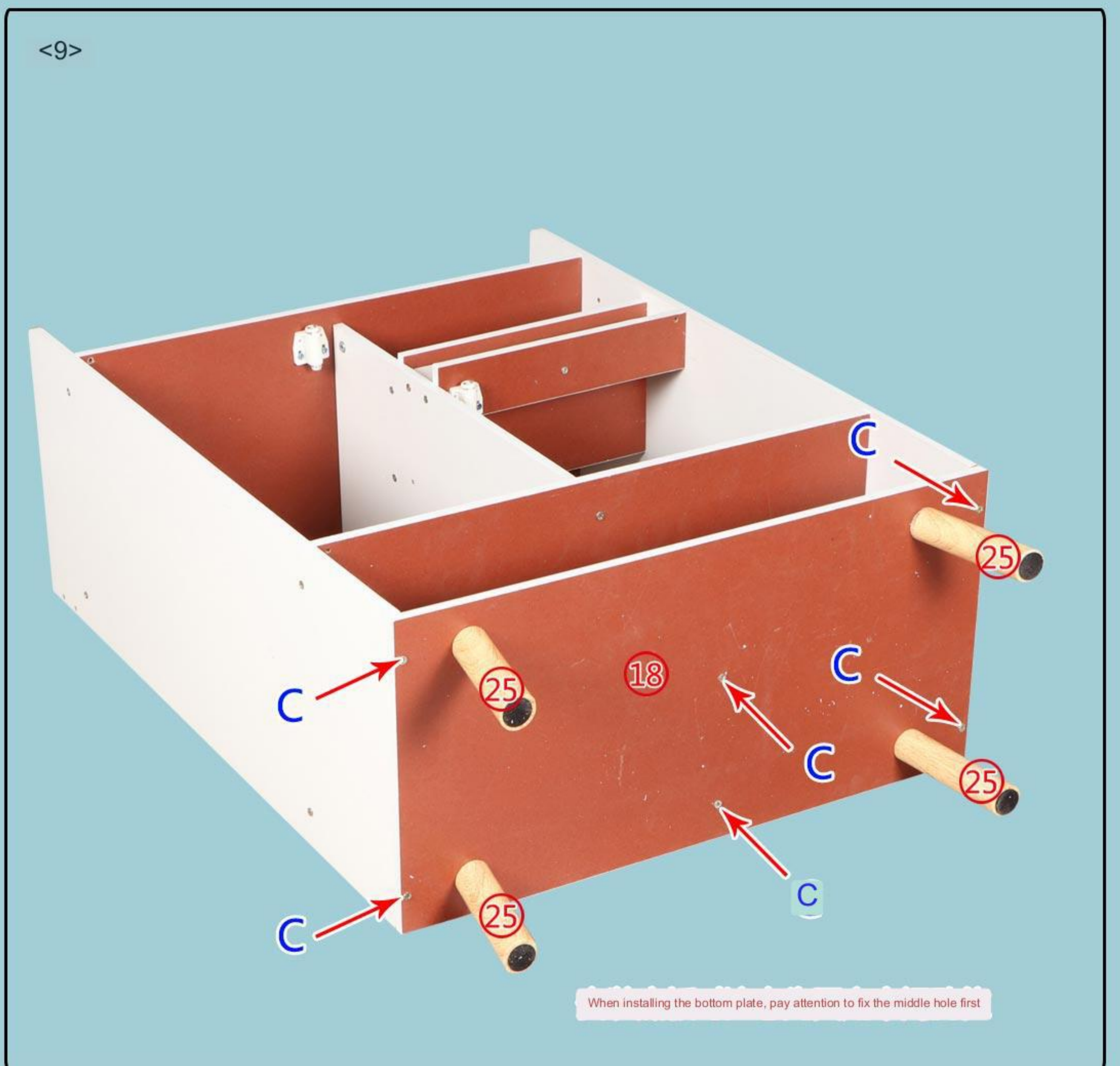
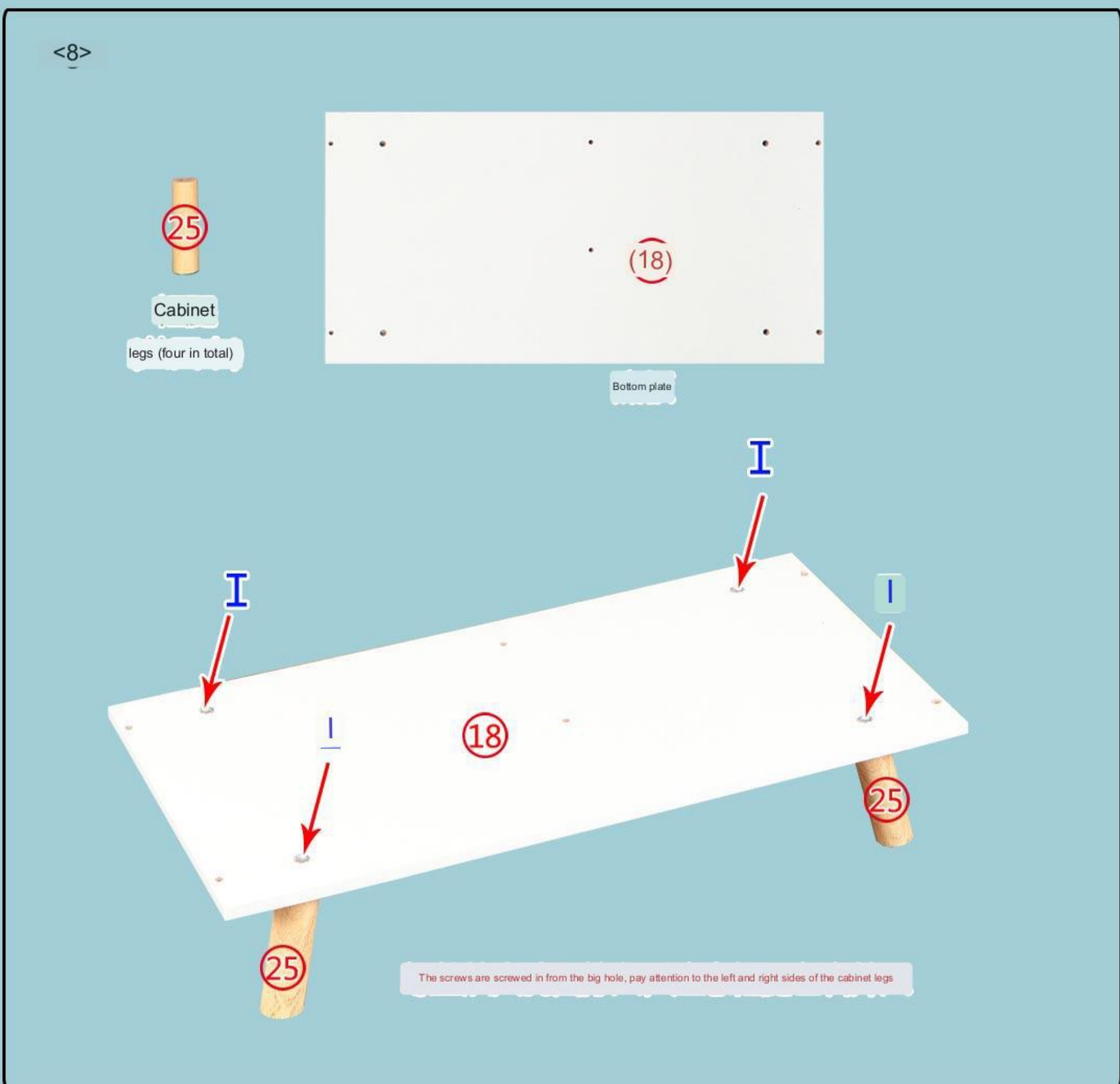
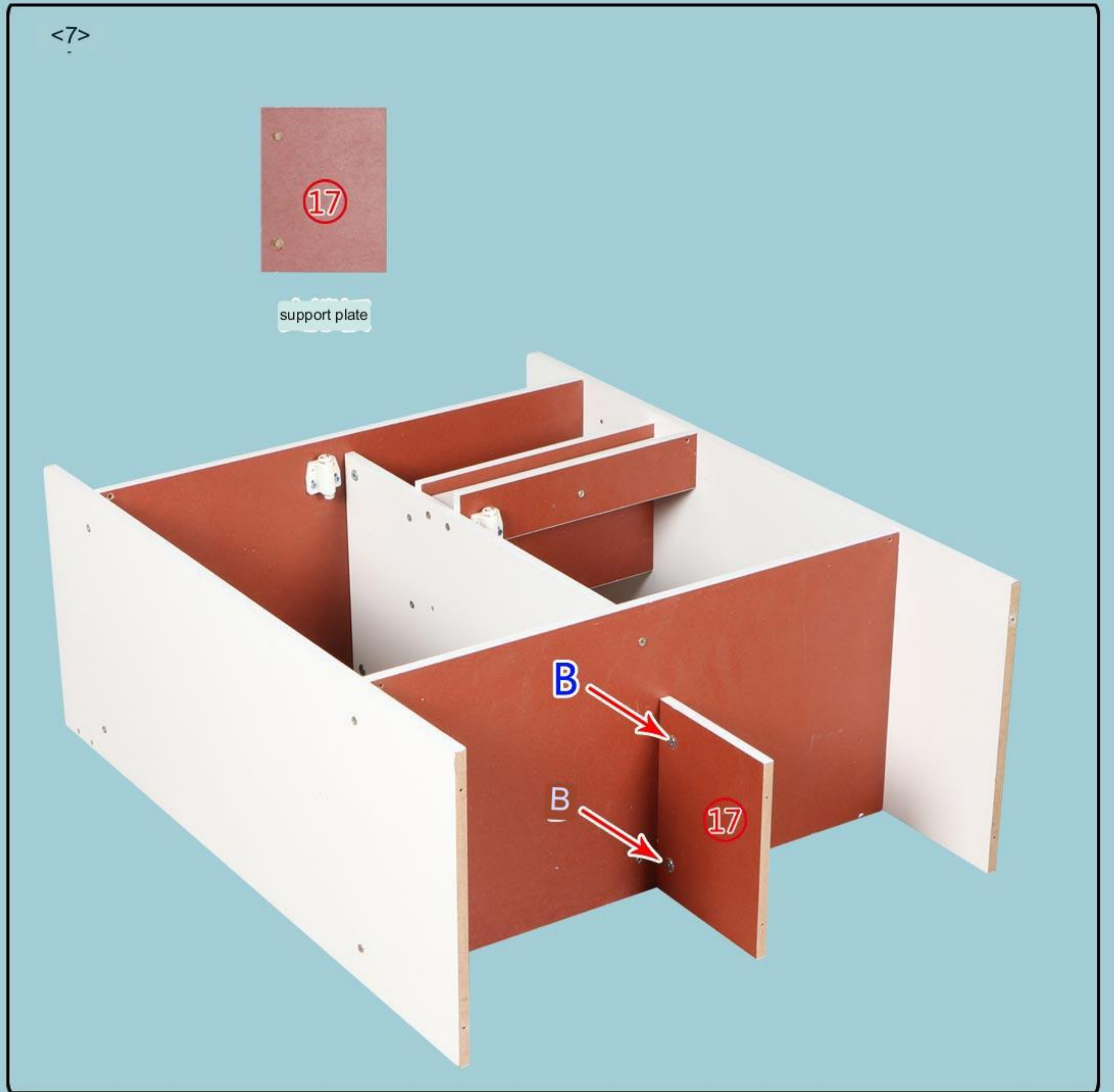
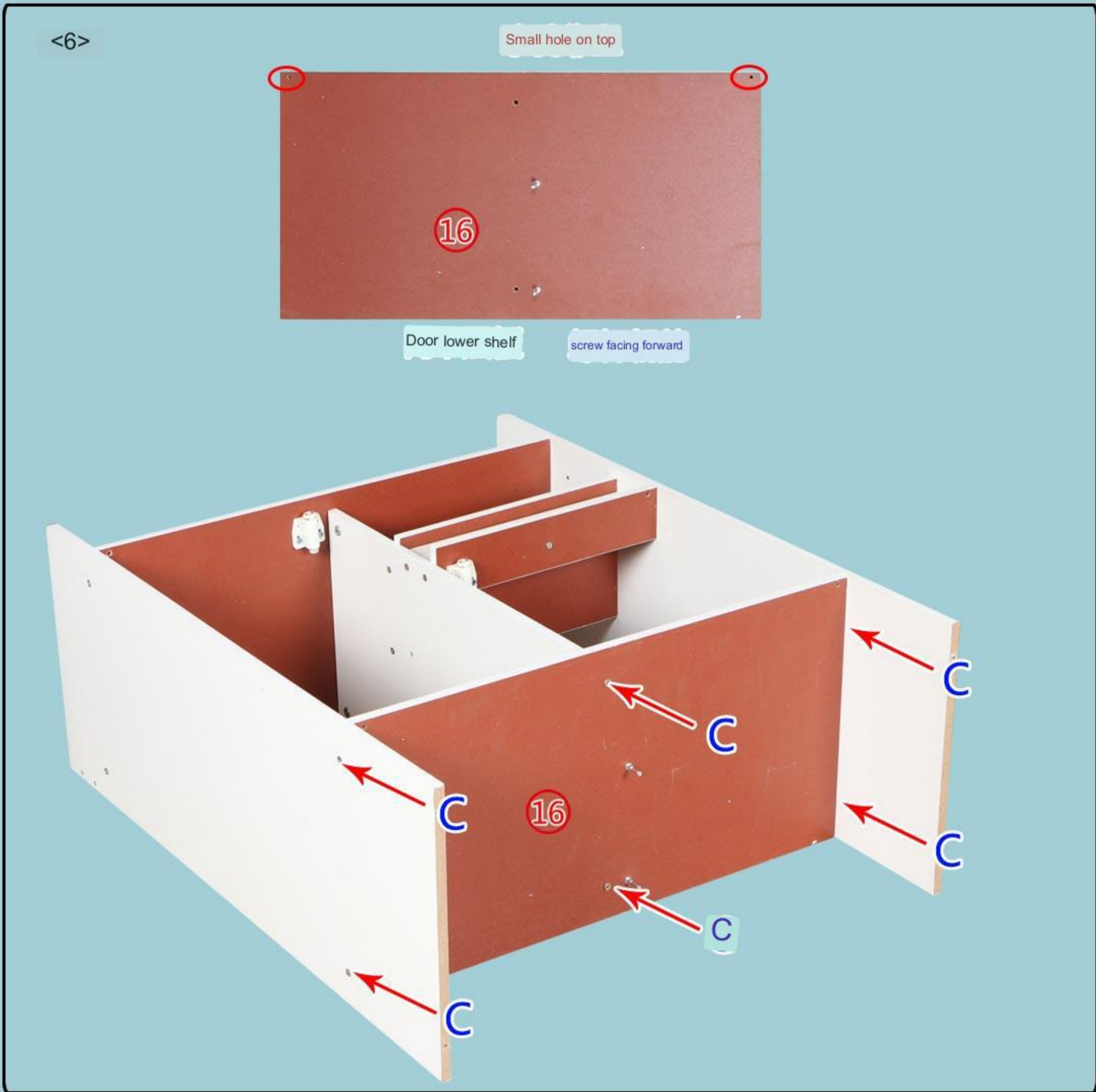


<4>

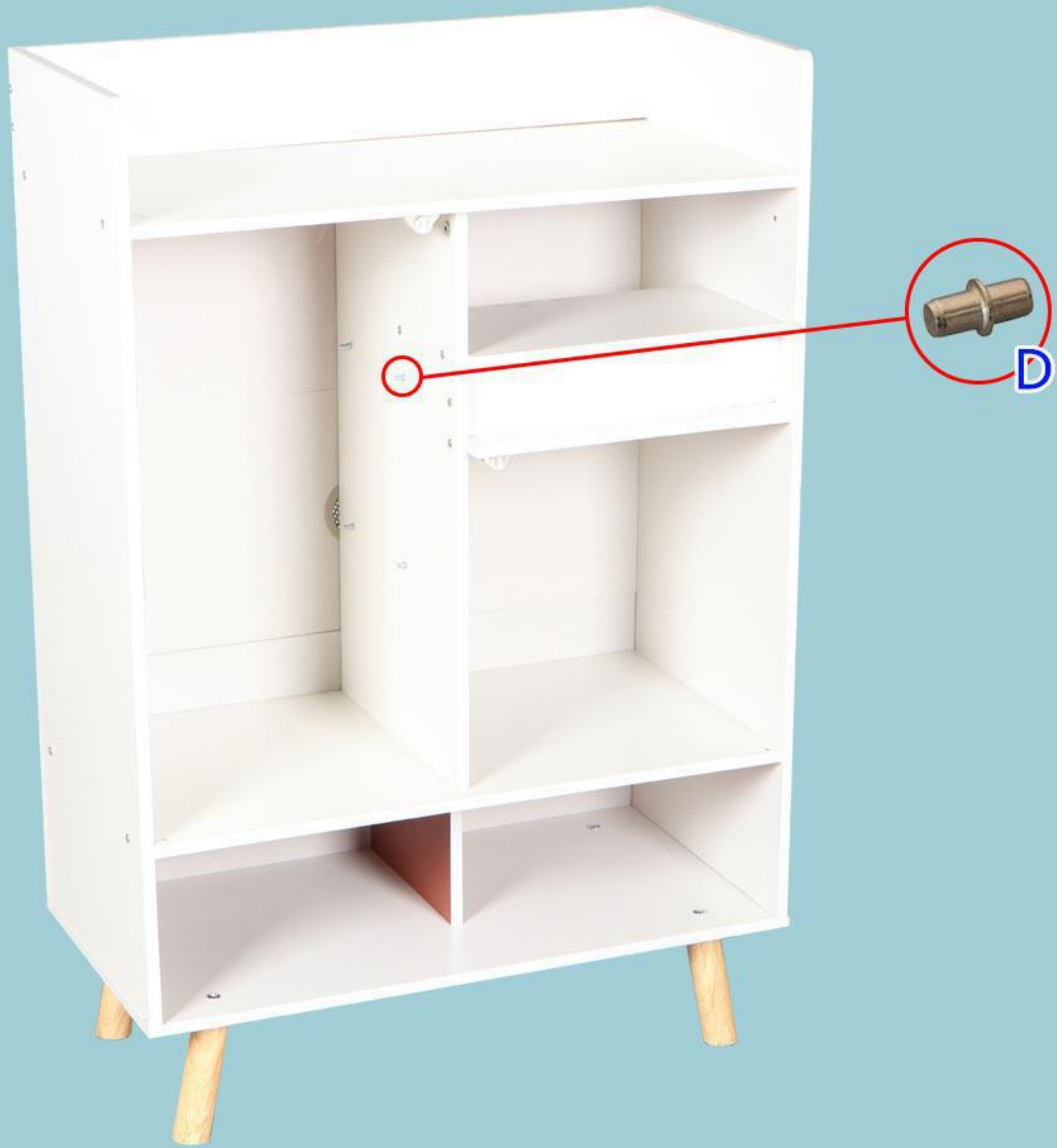


<5>





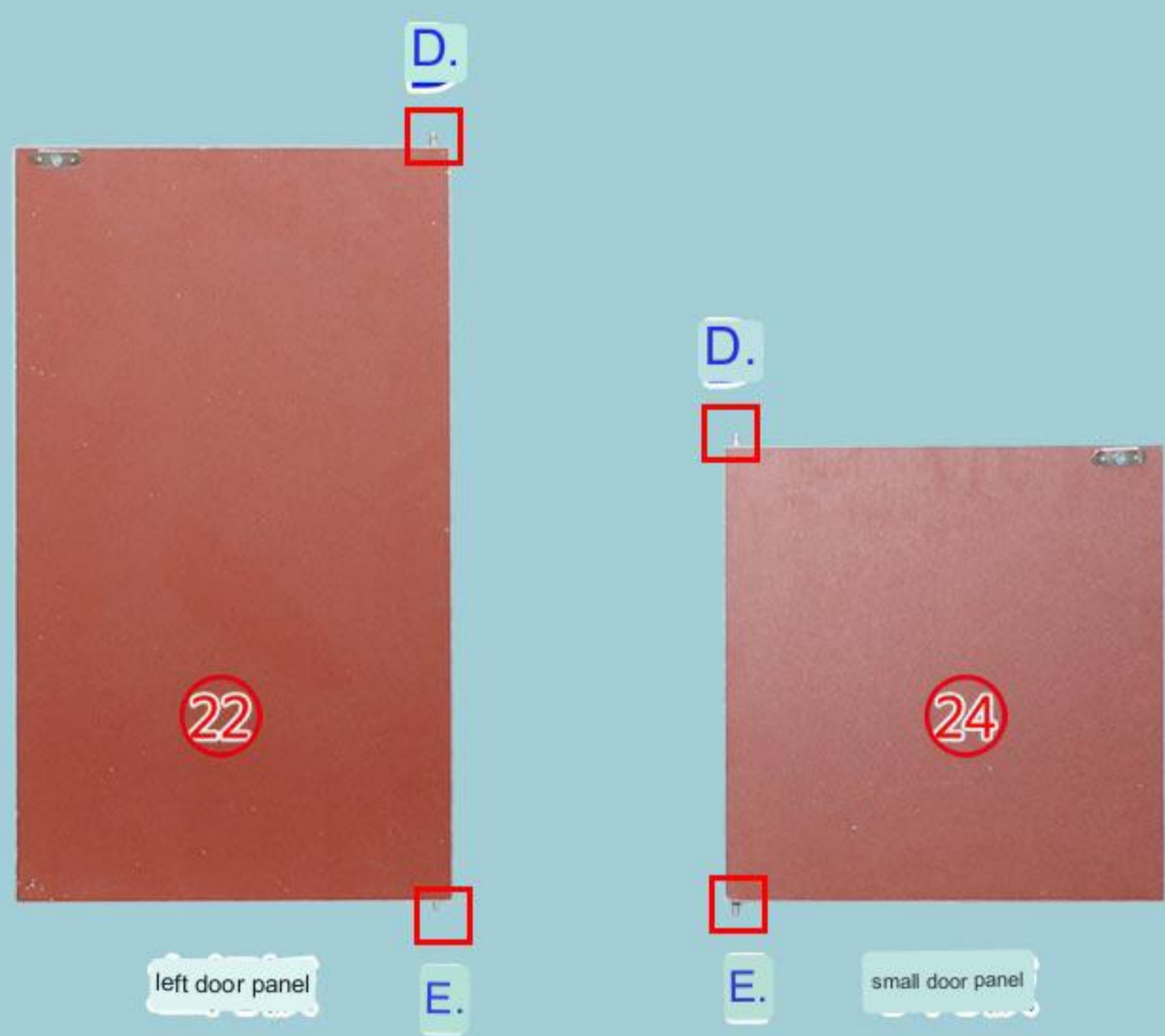
<12> The overall alignment, facing forward



<13> Put in small laminates



<14>



<15> Slowly push into the drawer

Method 1: Insert the metal pin after pushing in the drawer.

Method 2: After inserting the metal pin, push the drawer at an angle of 45 degrees.



Complete drawing!