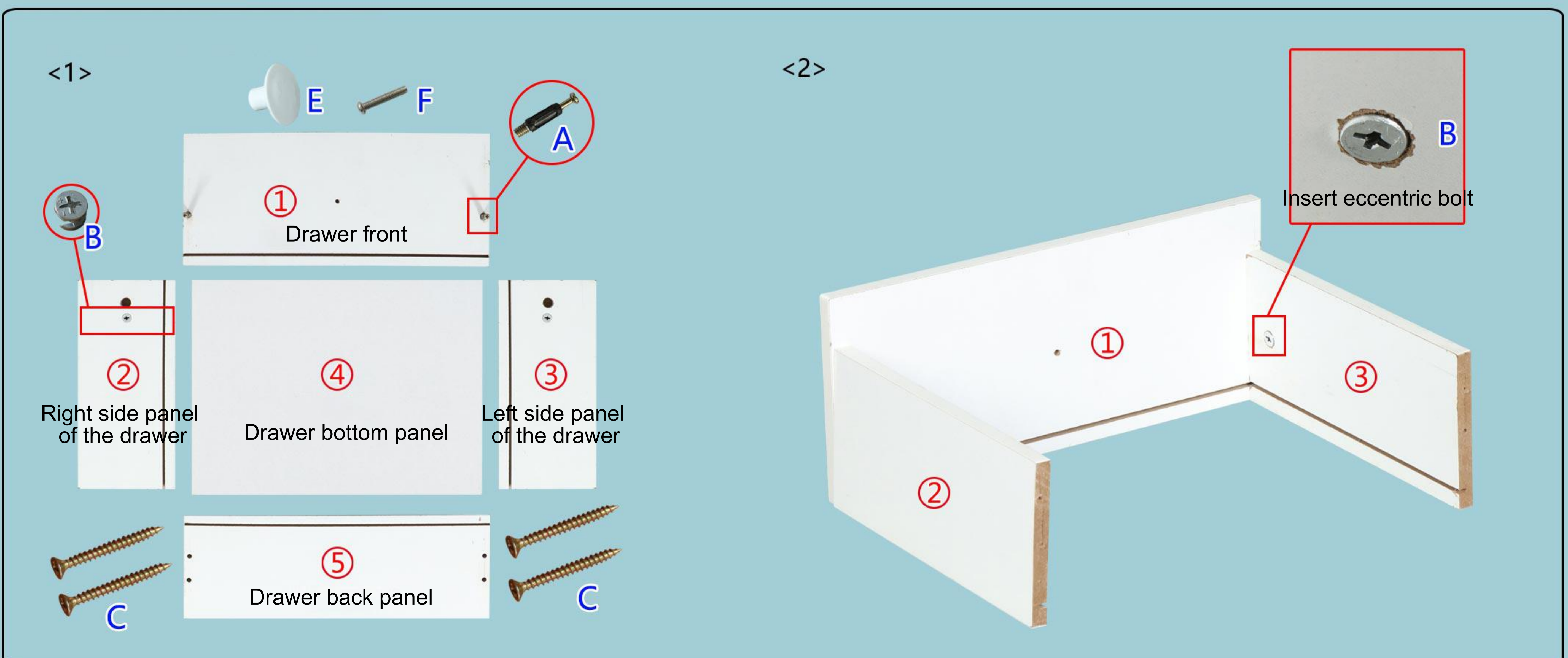
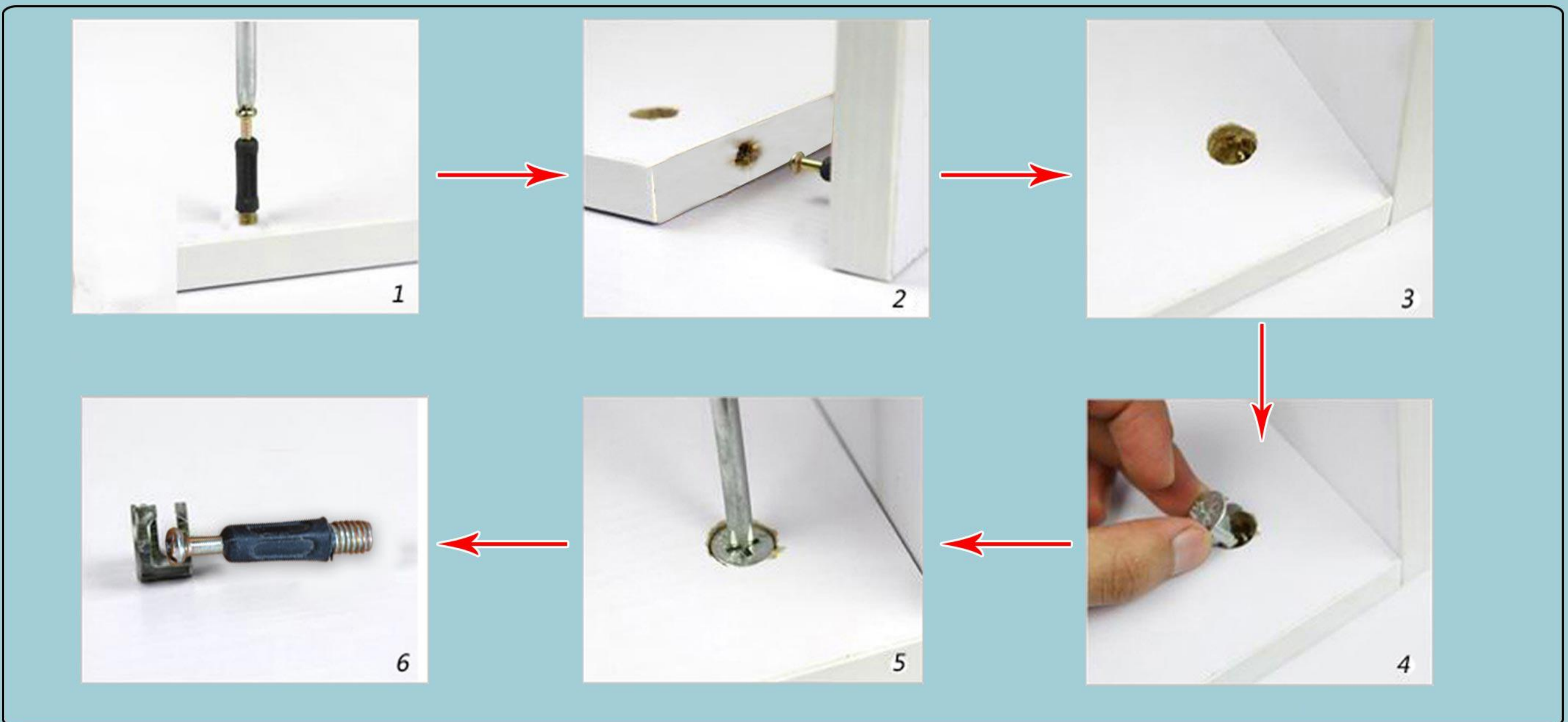
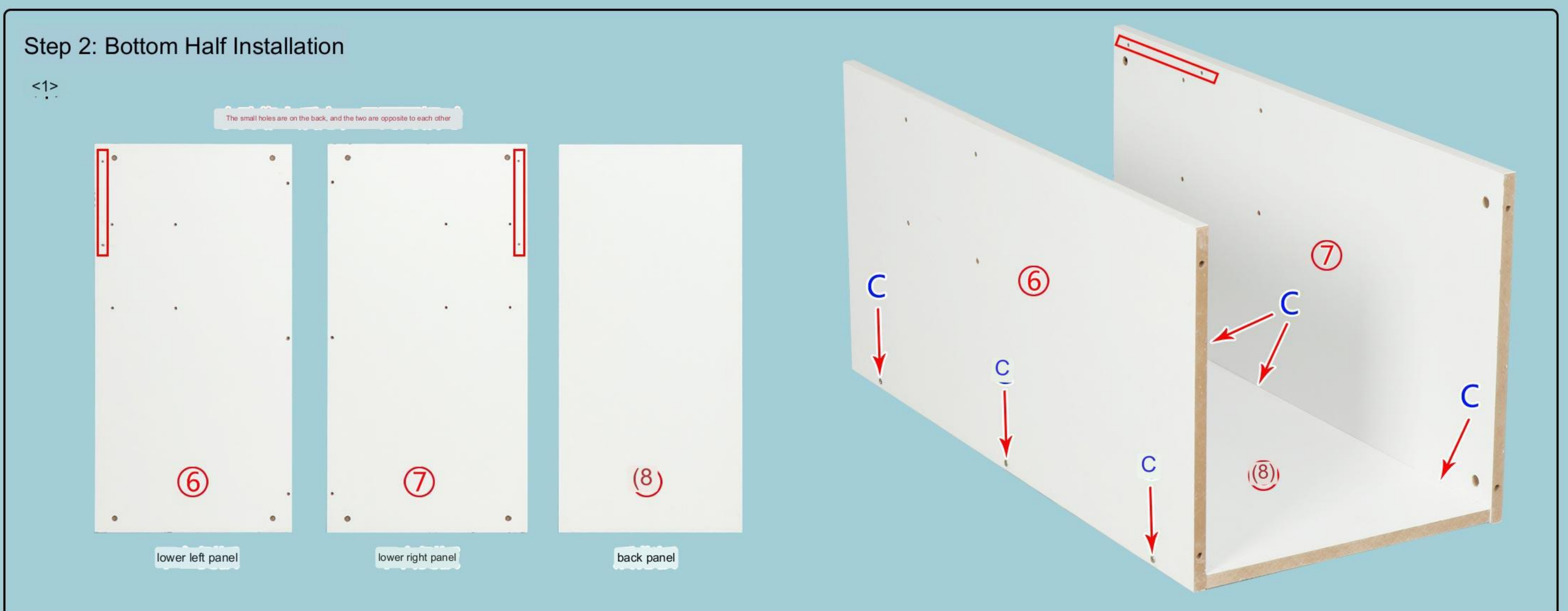
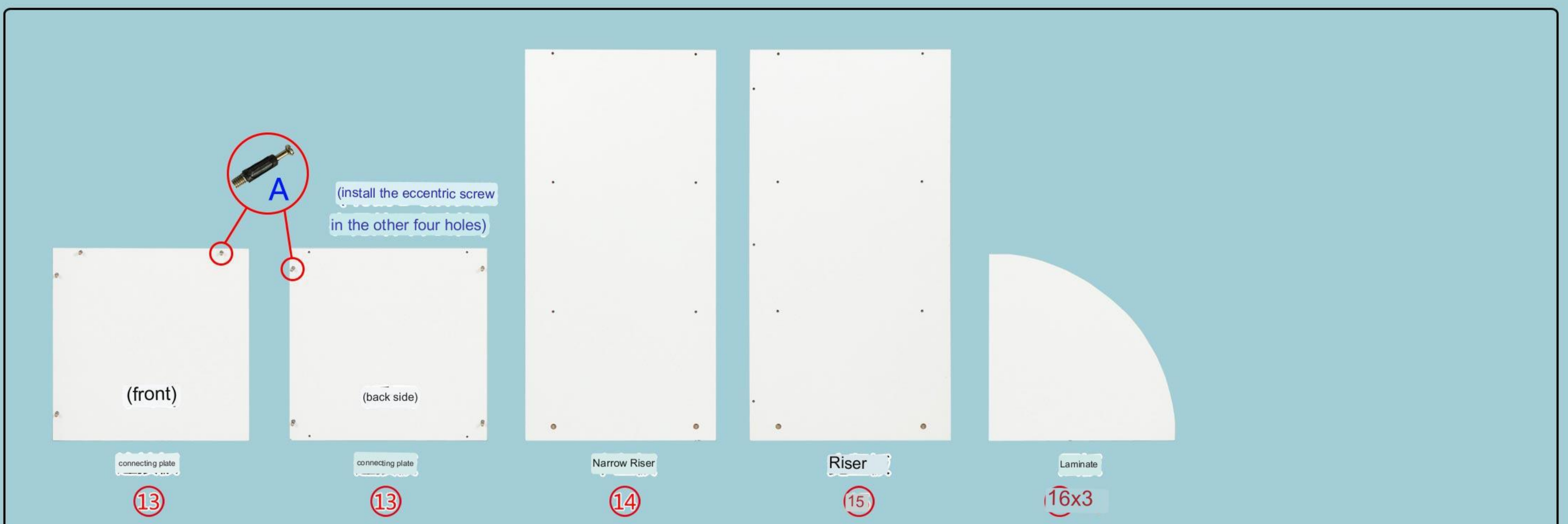
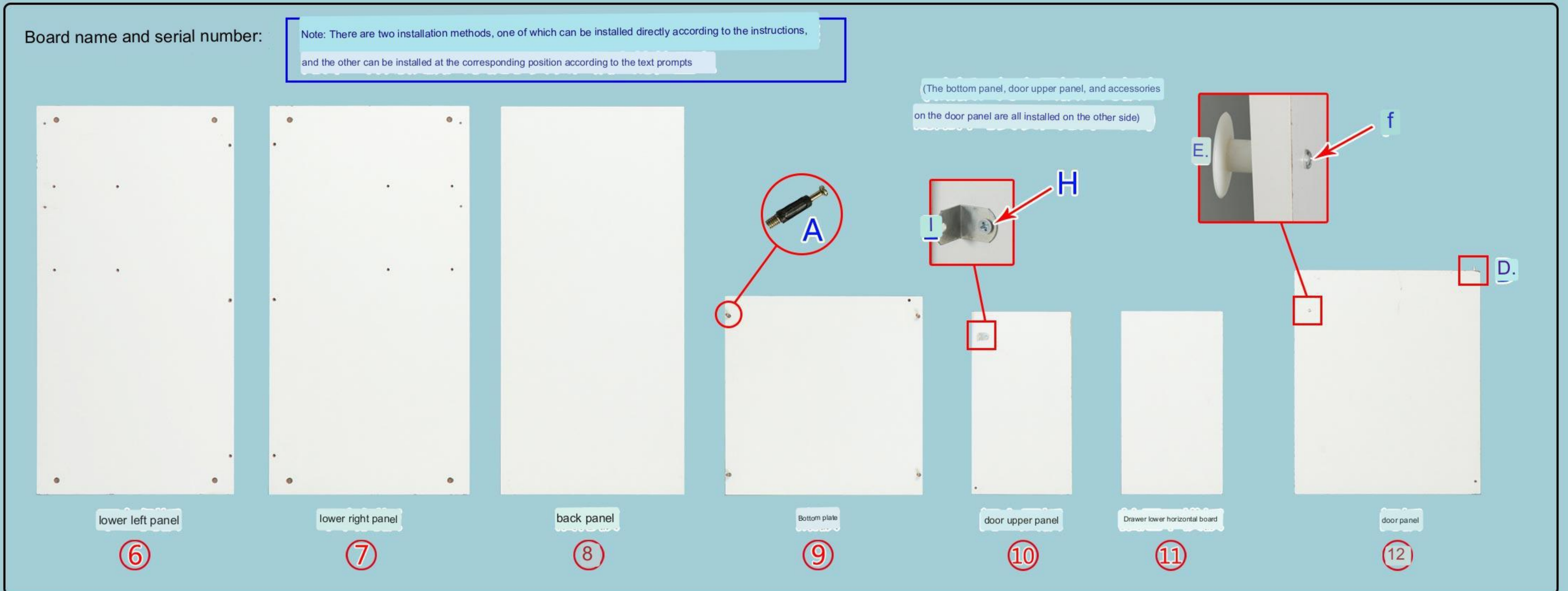
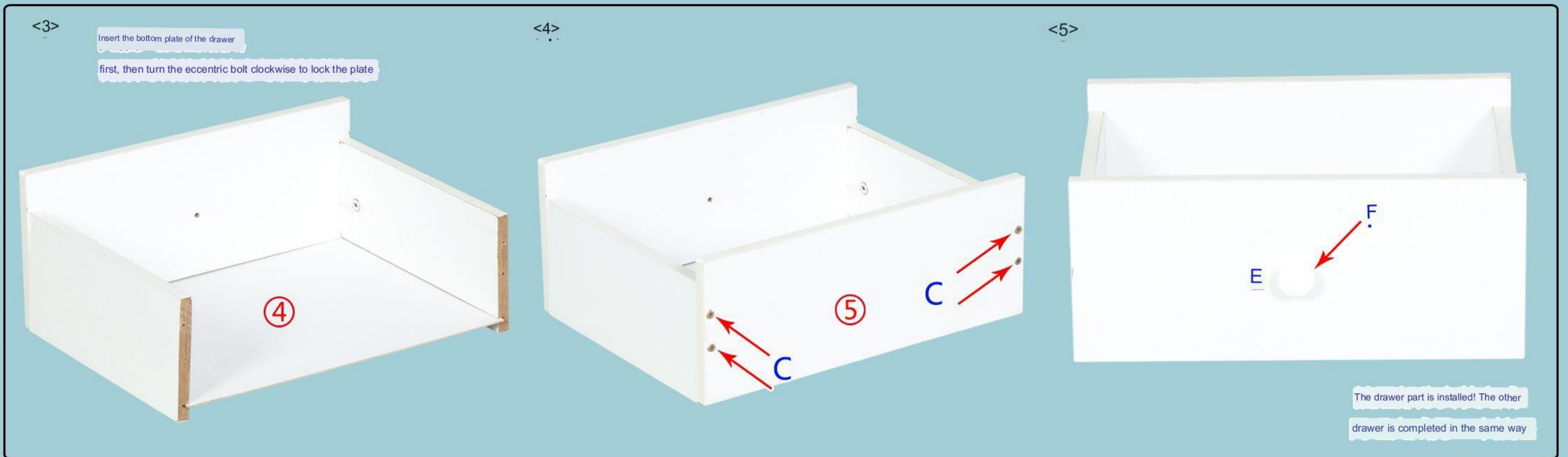
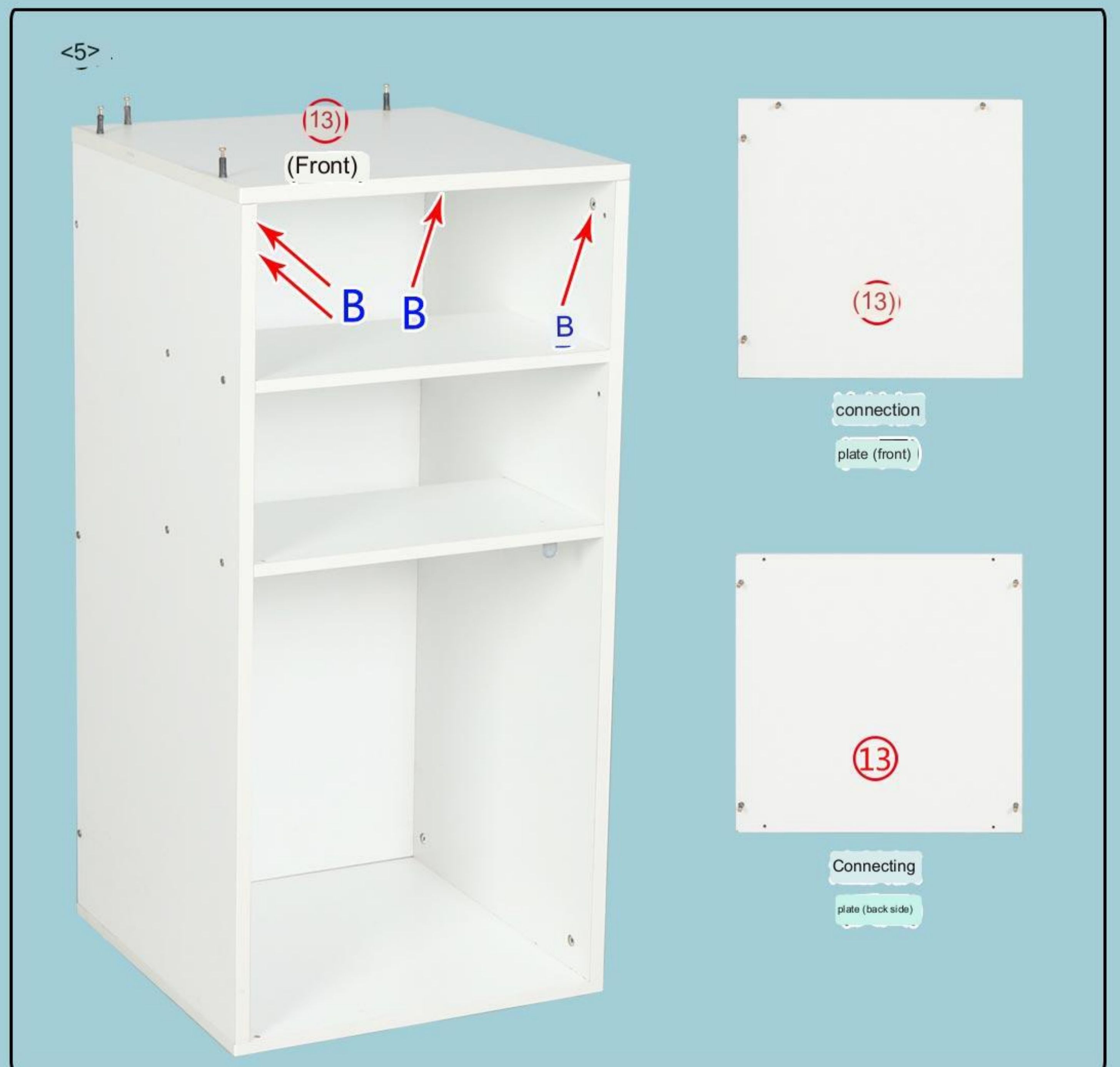
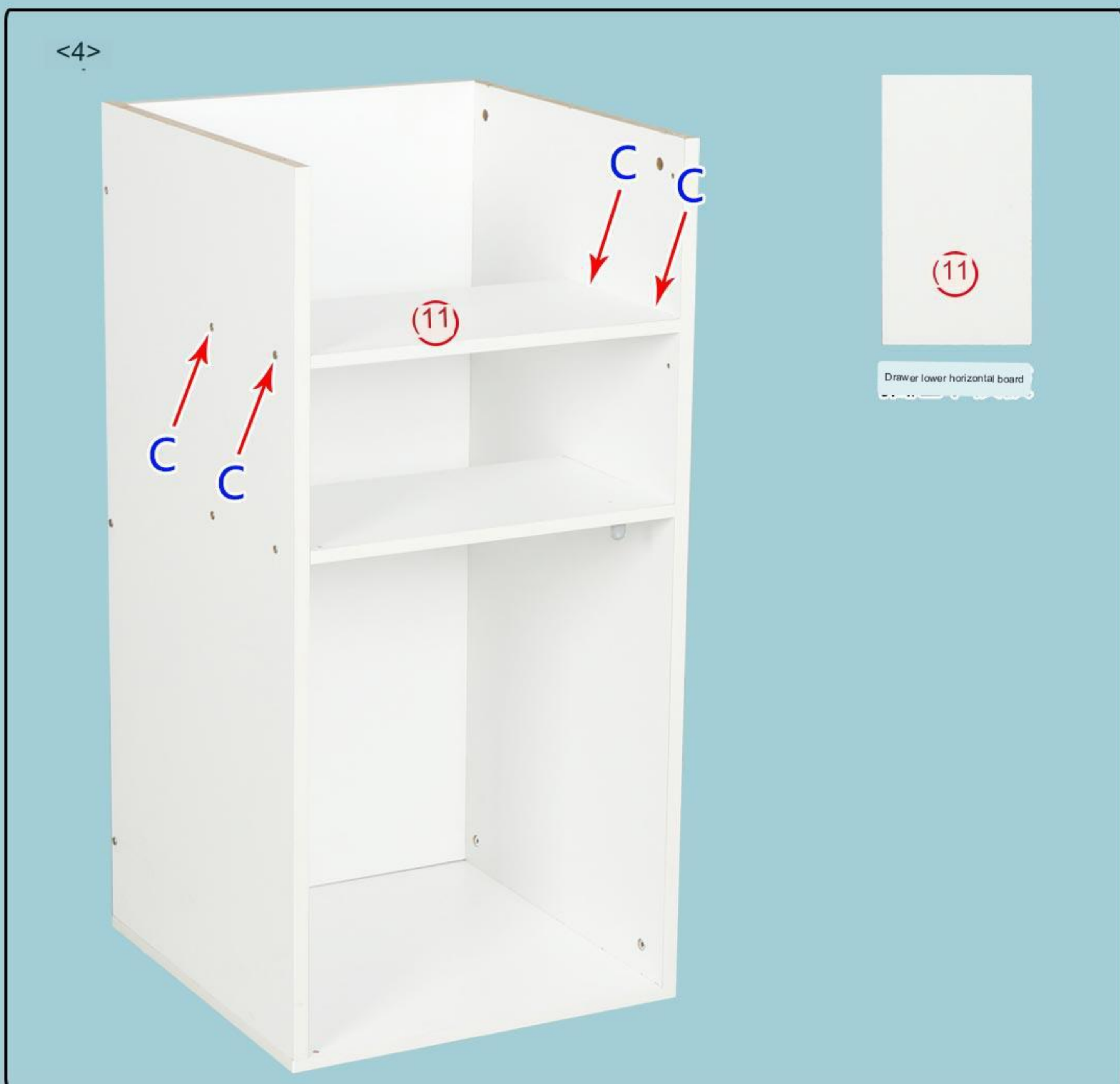
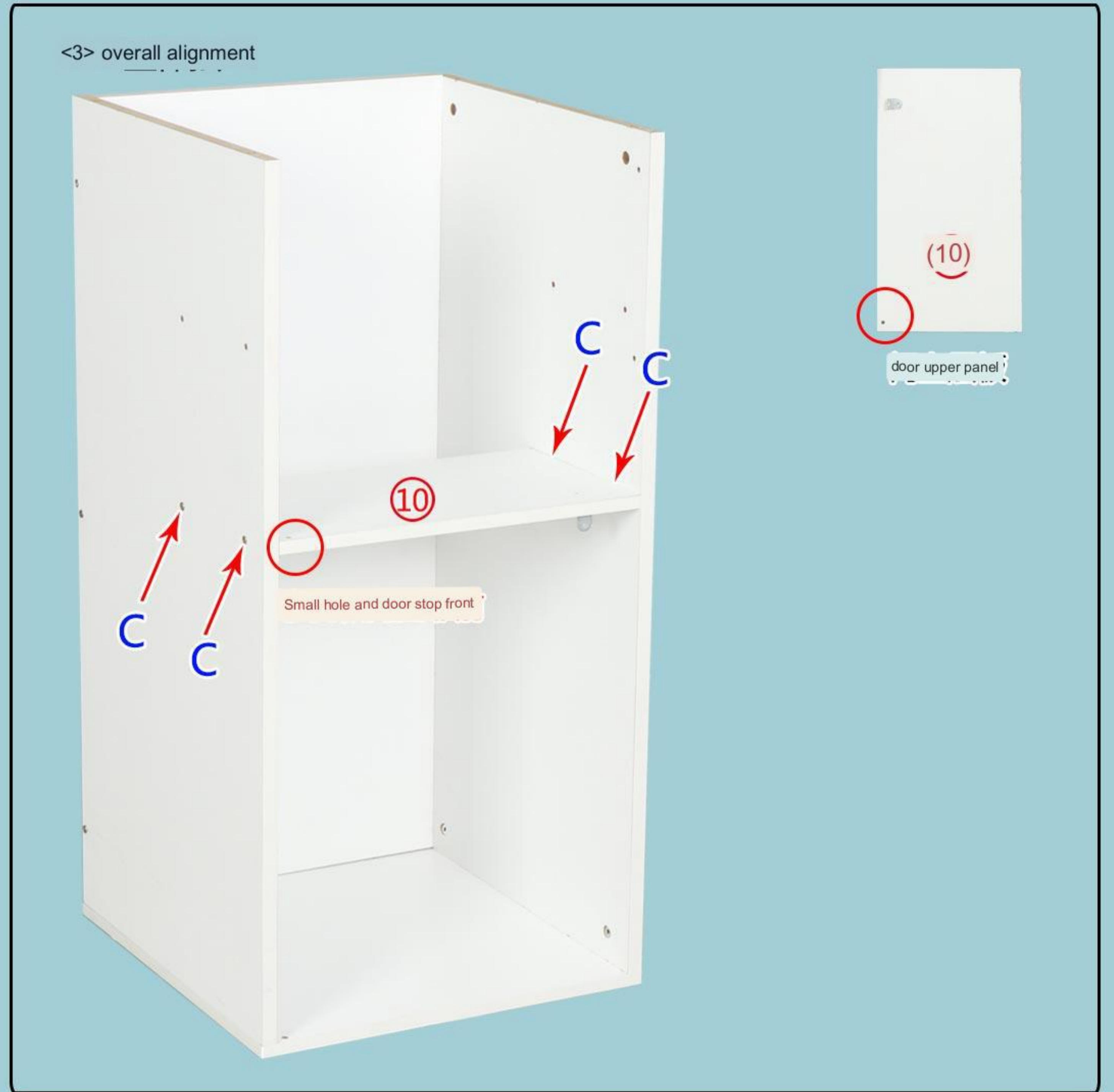
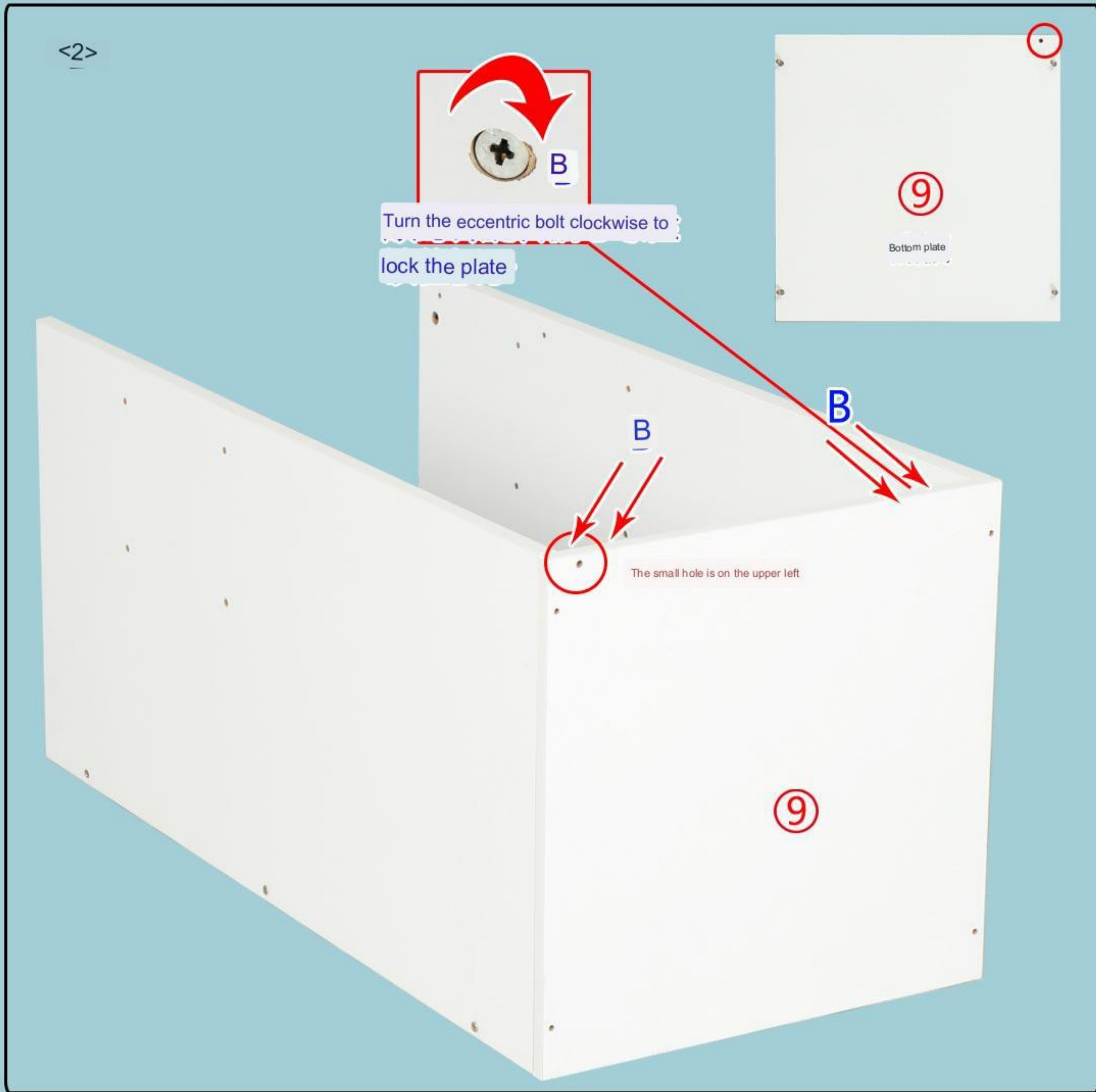


CC020 Installation Instruction

								
Eccentric Screw	Eccentric Bolt	3.5cm Selftapping Screw	Metal Pin	Handle	Handle Screw	Door hinge	Micro Self-Tapping Screw	Door Stopper
A*16	B*16	C*37	D*5	E*3	F*3	G*1	H*3	I*1

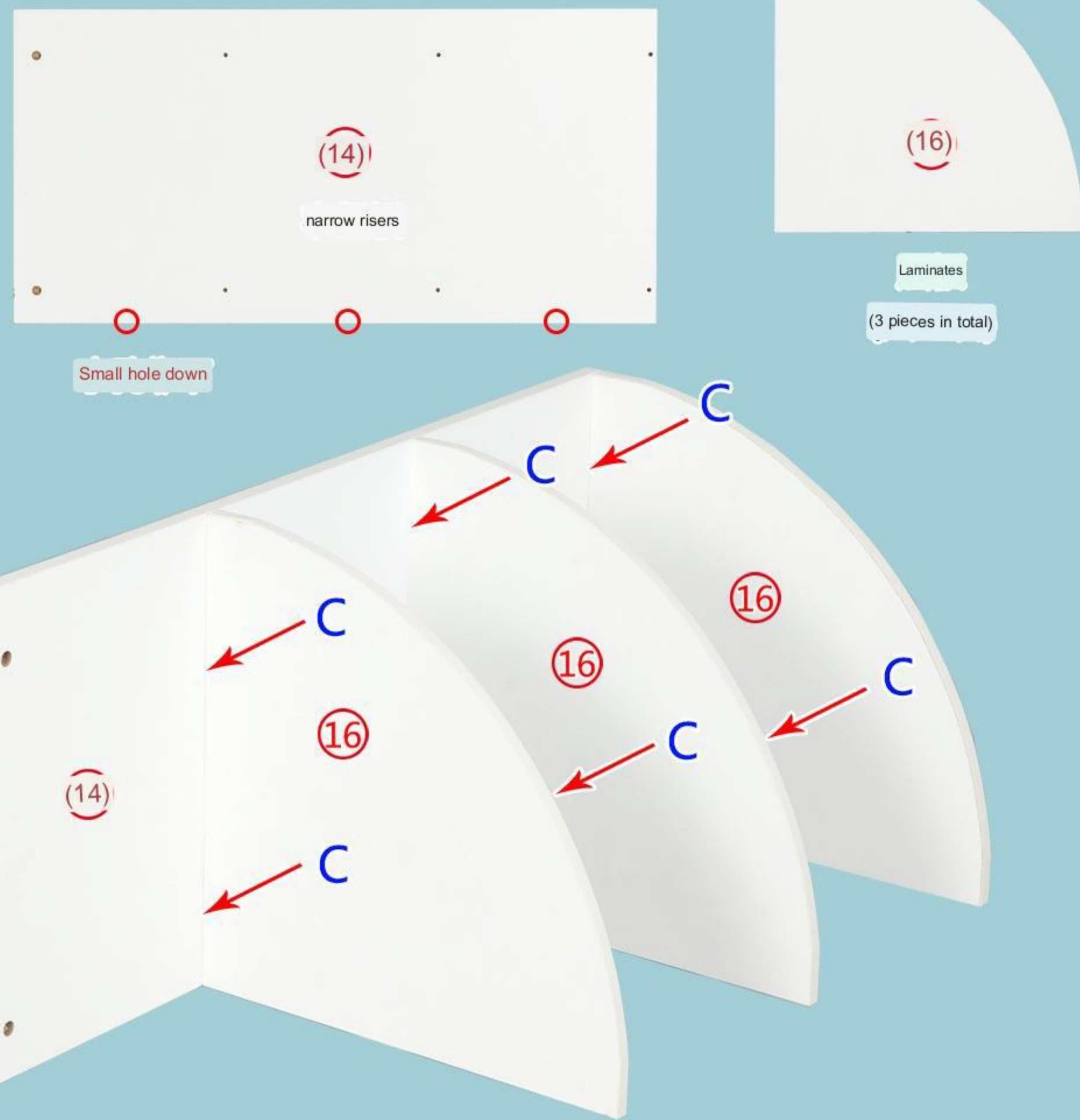






Step 3: Top Half Installation

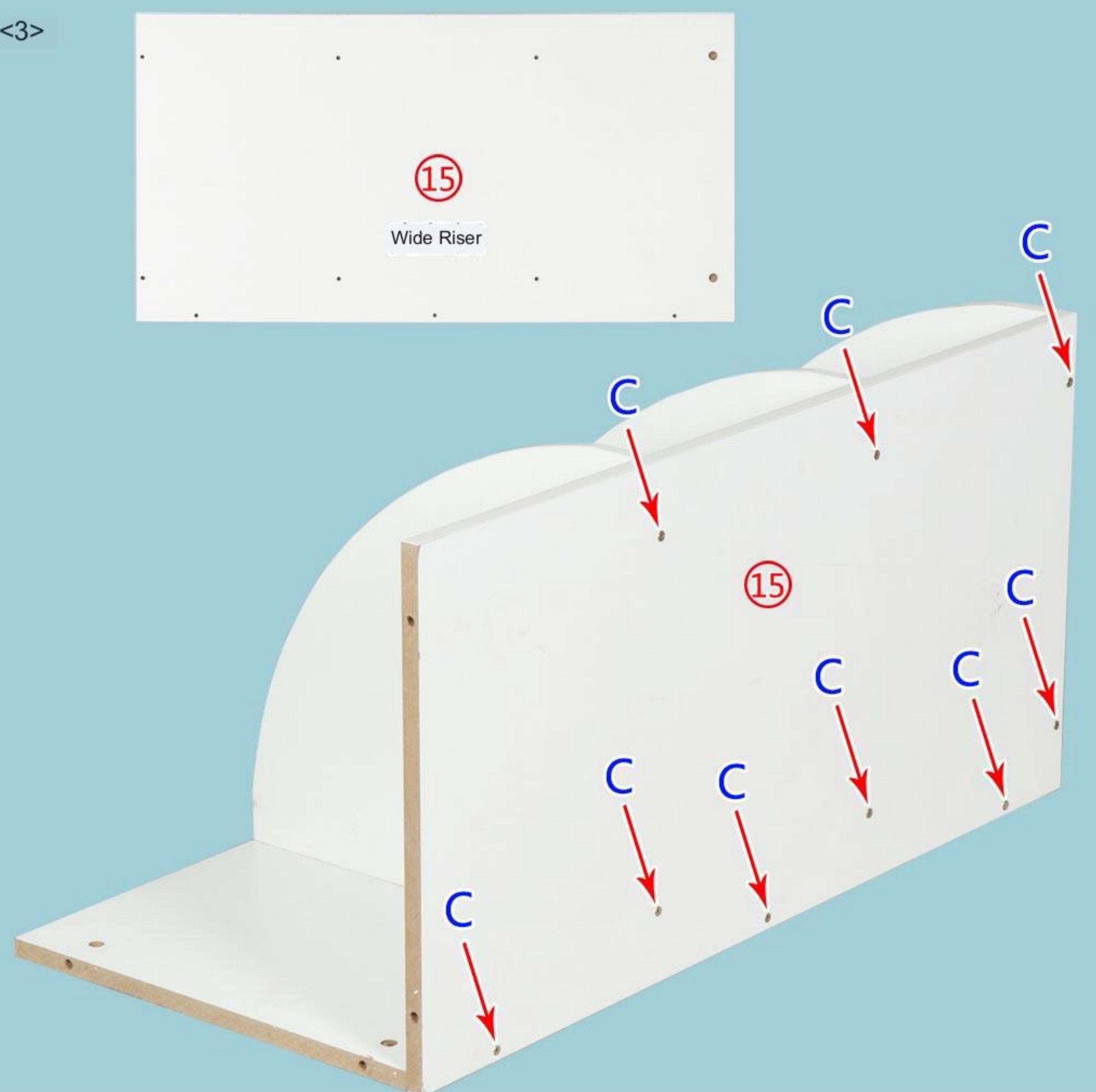
<1>



<2> Flip 90 degrees to the left



<3>



Step 4: Whole Parts Installation

<1>

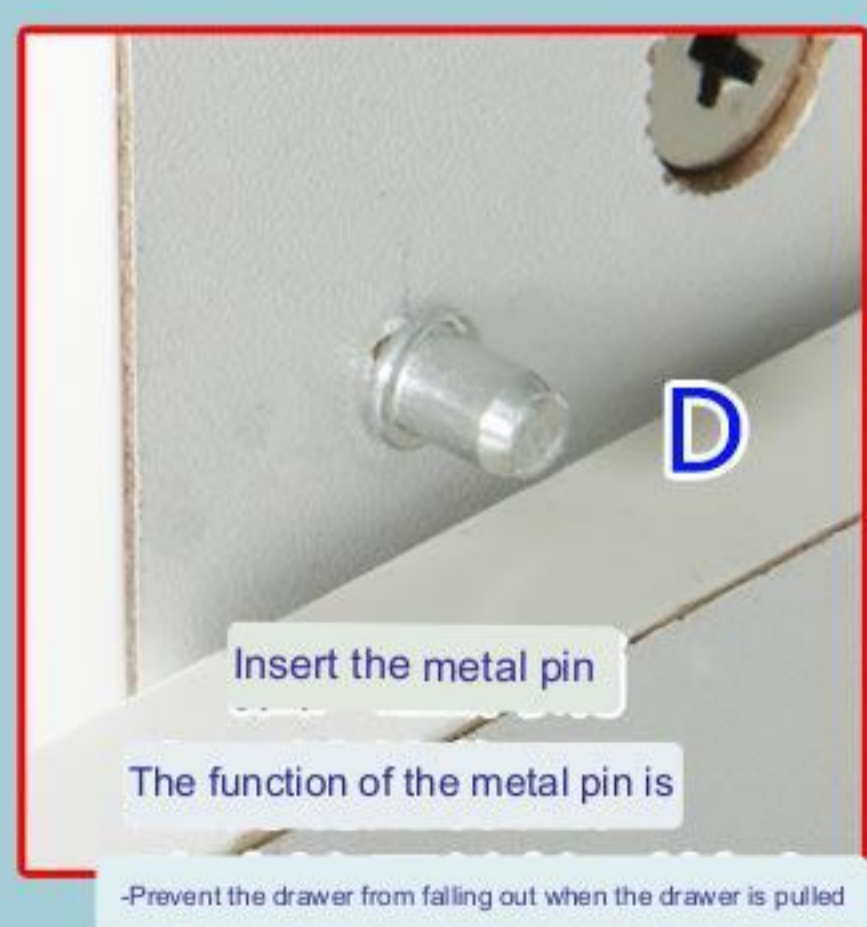


<2> Slowly push into the drawer

Method 1: Push in the drawer and insert the metal pin.

Method 2: The drawer is tilted after inserting the metal pin

Push in at 45 degrees.



<3> Installation completed



Complete drawing!