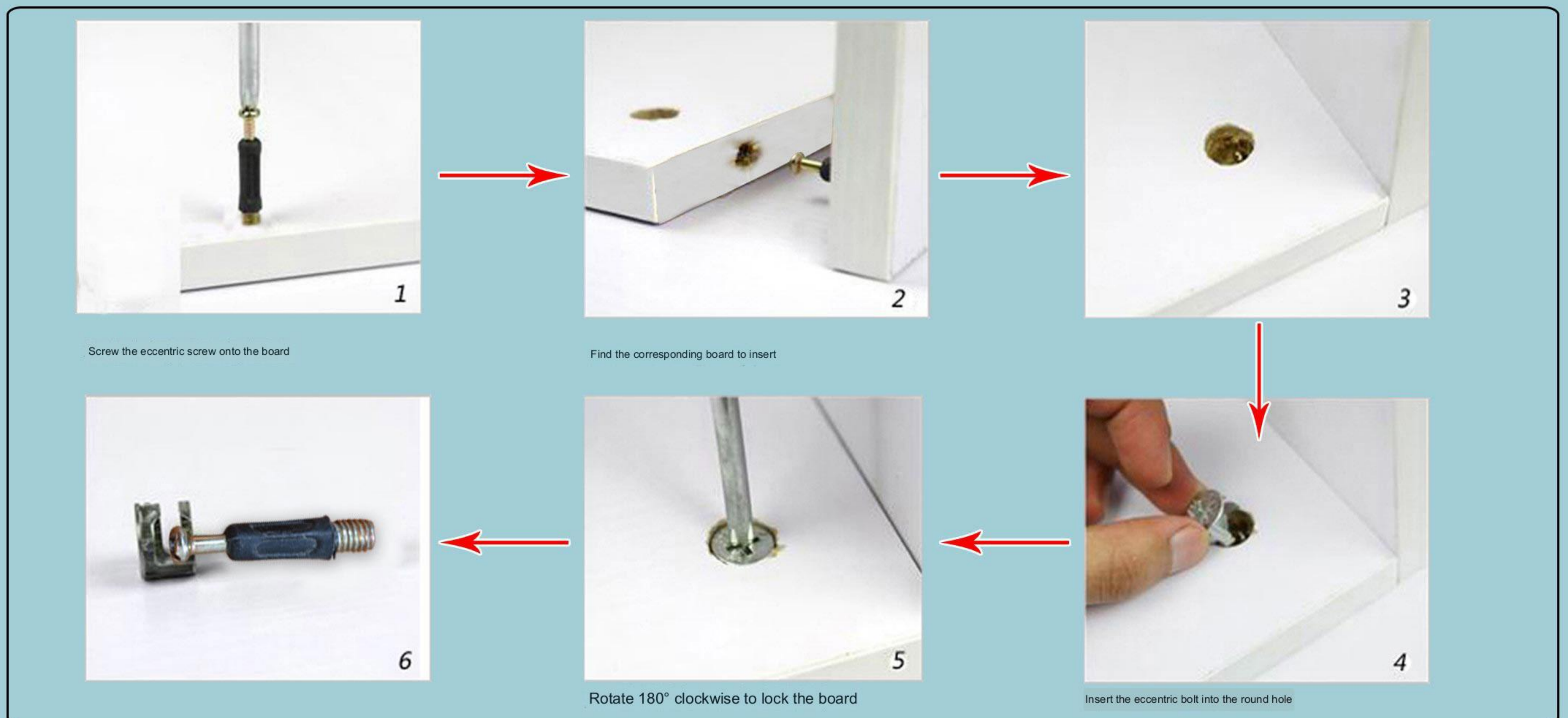


# SOCE014 Installation Instructions

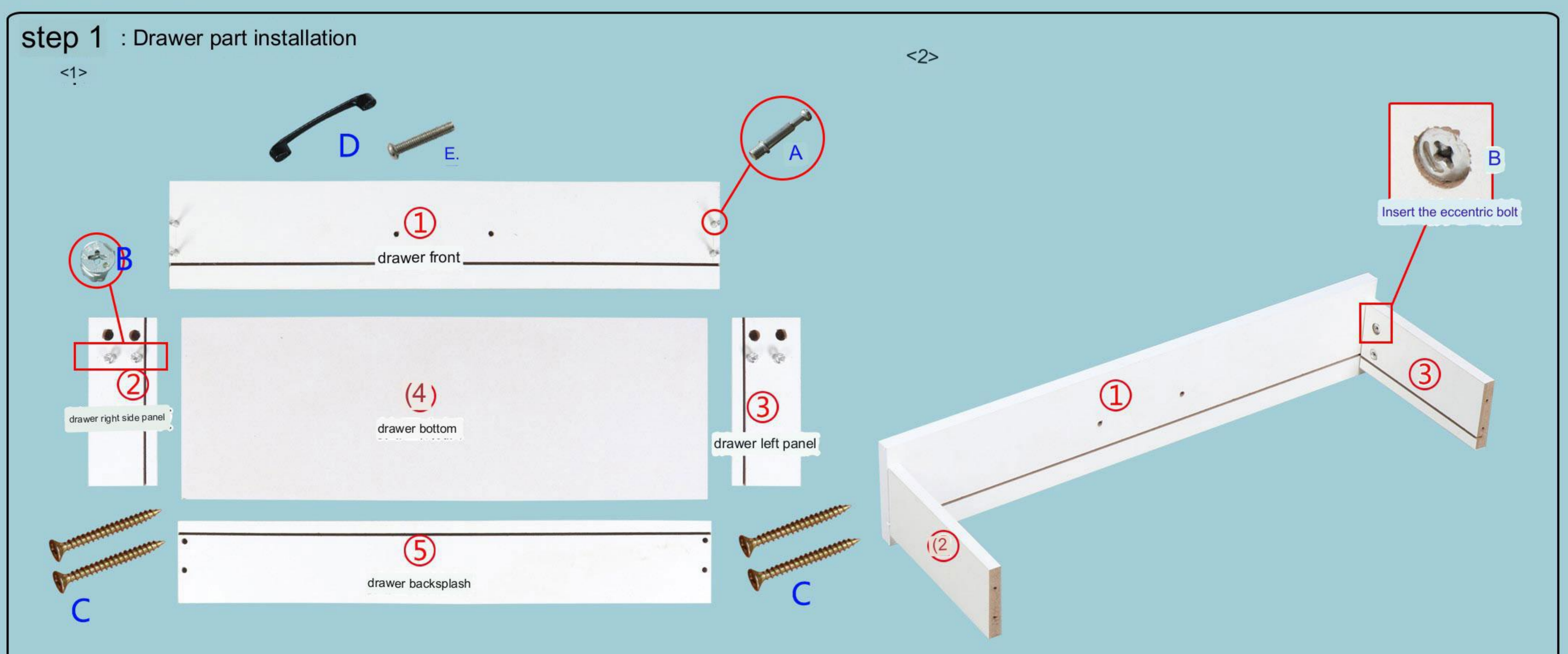
									
Eccentric screw	Eccentric bolt	3.5CM self-tapping screw	handle	handle screw	metal pin	Shaft kit	Smallest self-tapping screw	Anti-dumping device	Black eccentric screw
A*4	B*4	C*29	D*4	E*8	F*2	G*6	H*48	I*1	J*6

Reminder: Tighten the screws seven times during installation, and then tighten them after everything is completed!

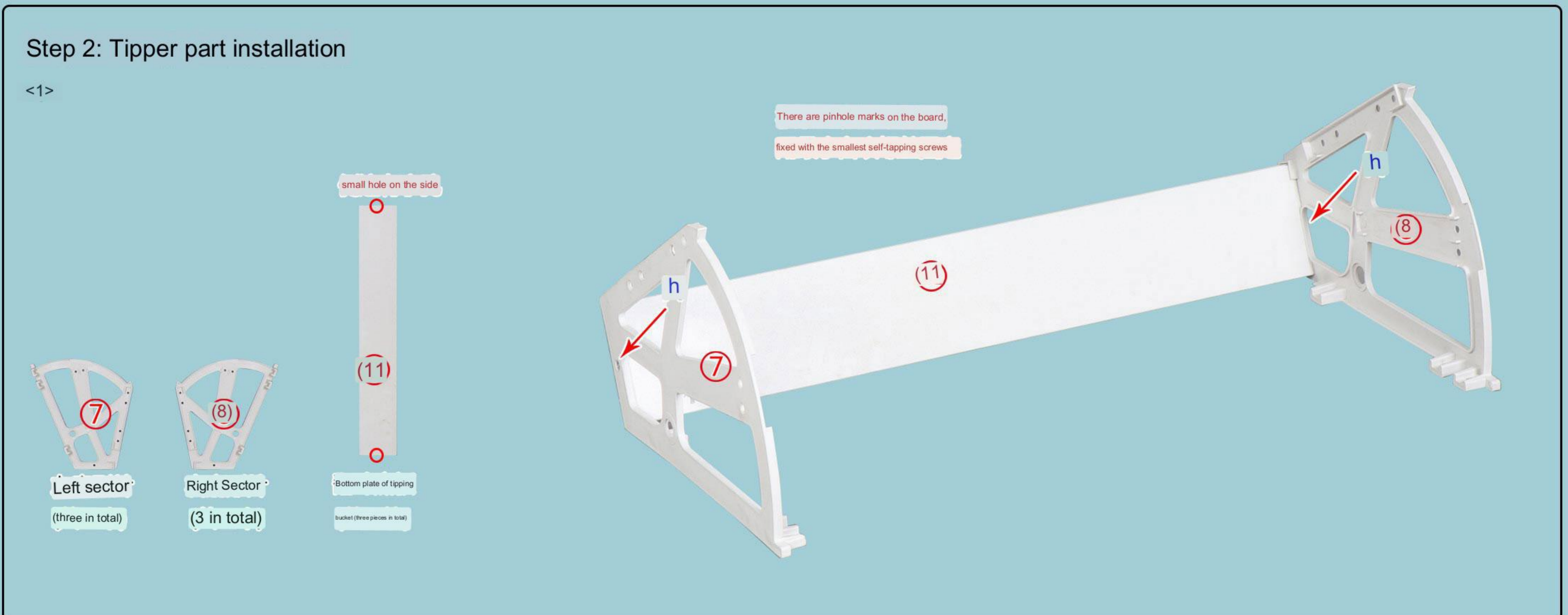
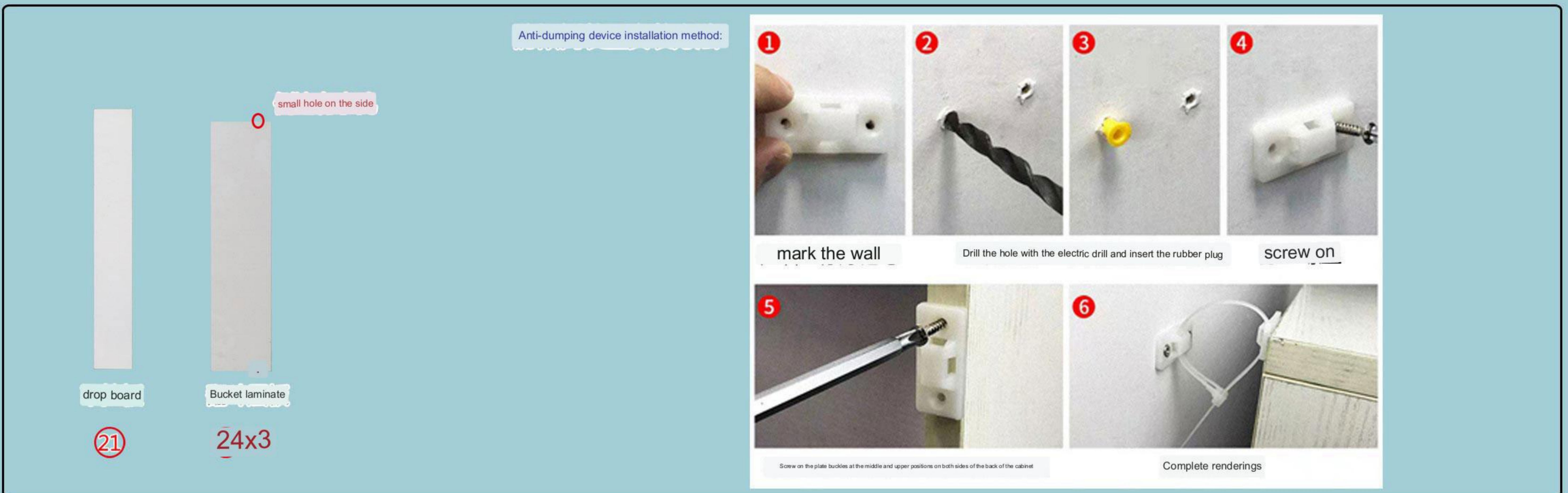
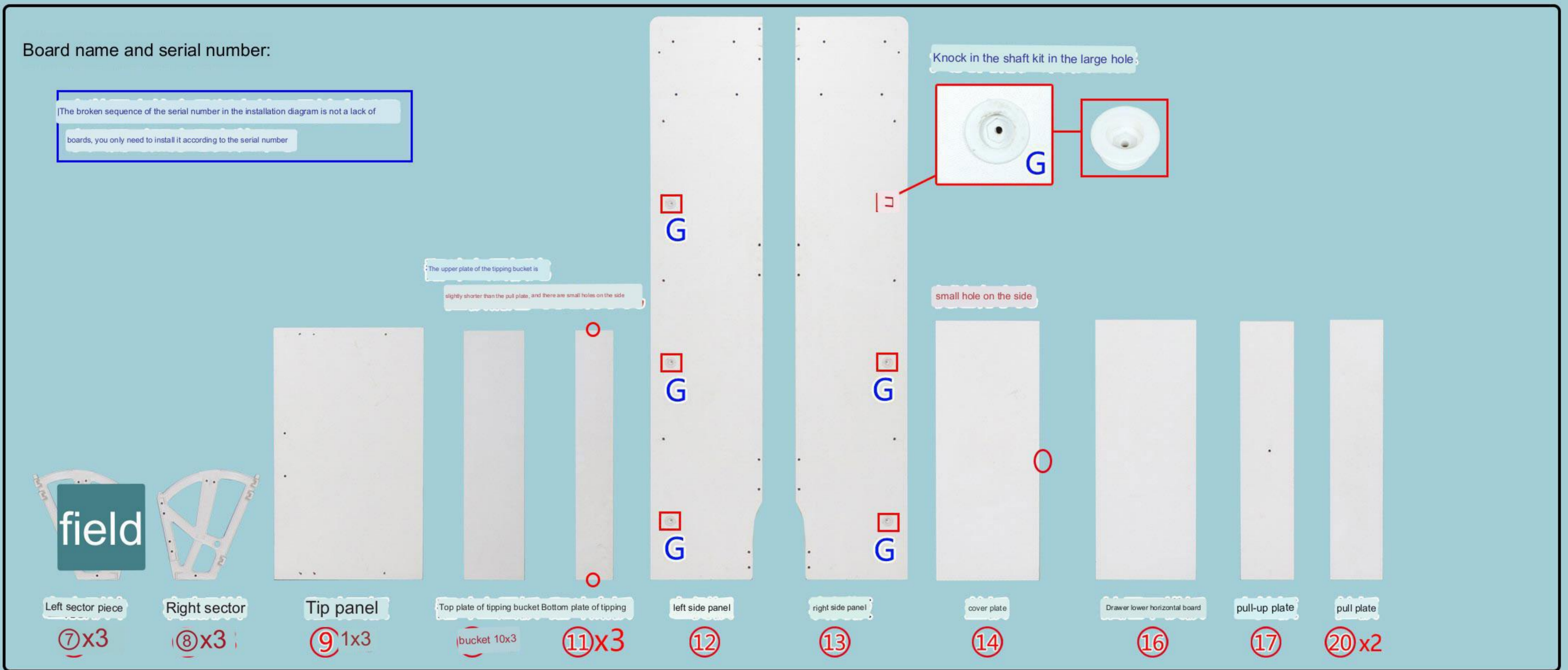
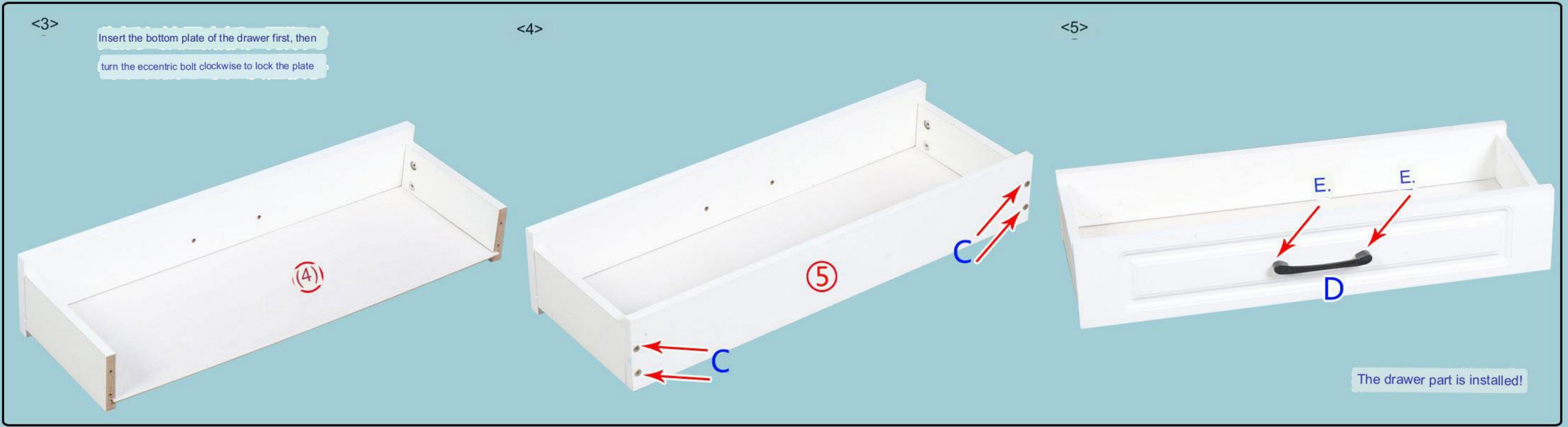
Eccentric installation principle:



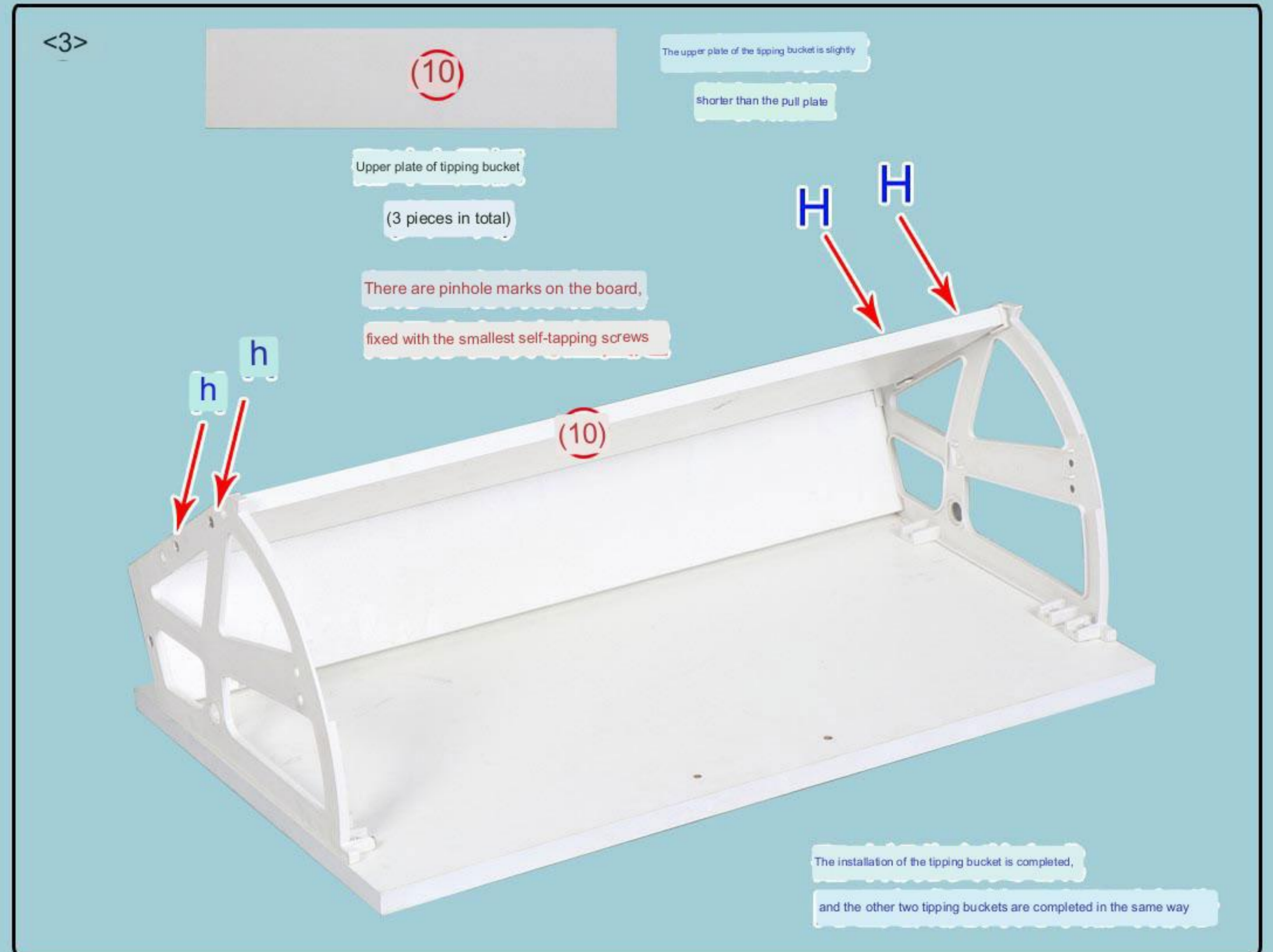
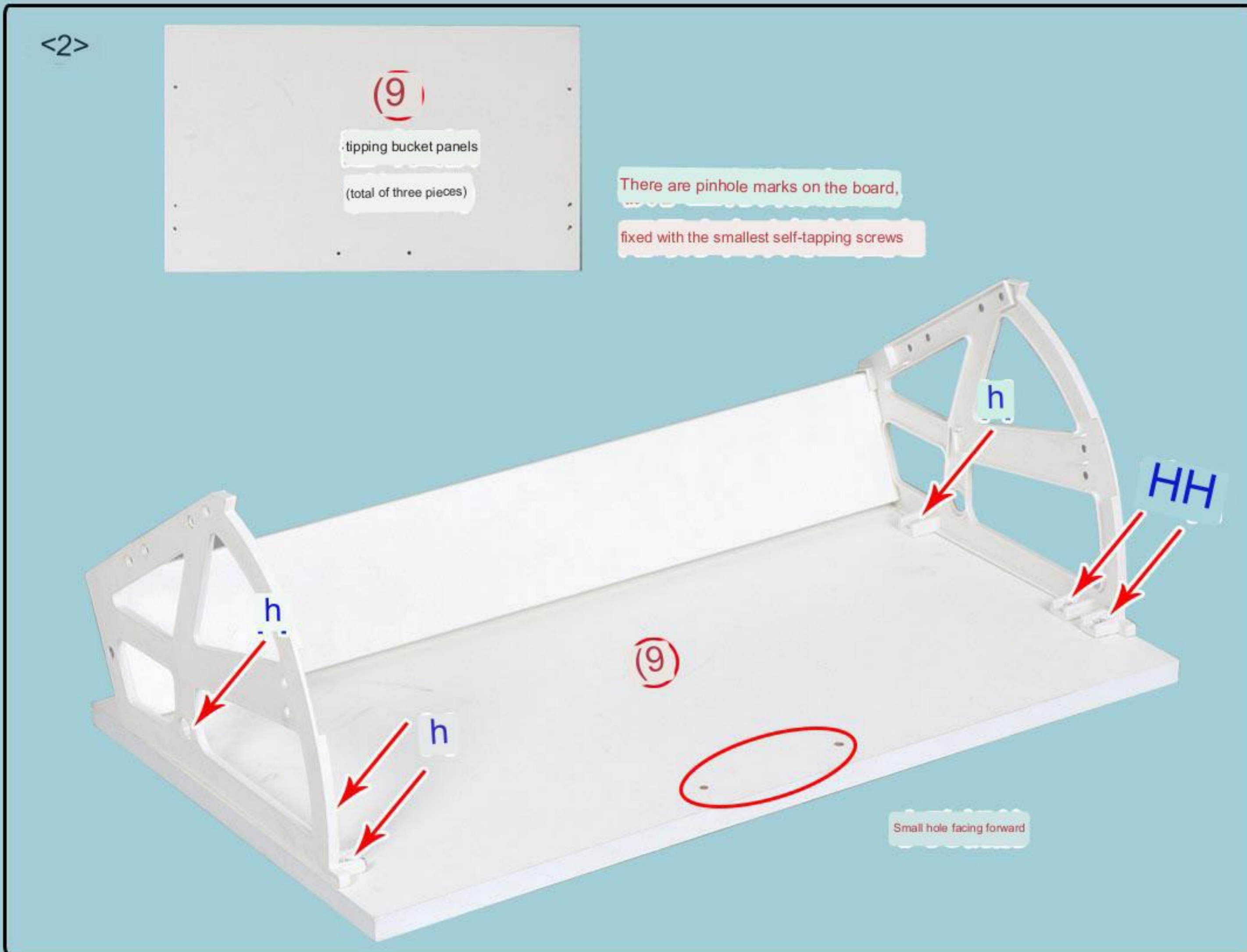
installation steps:











### Step 3: Whole Parts Installation

