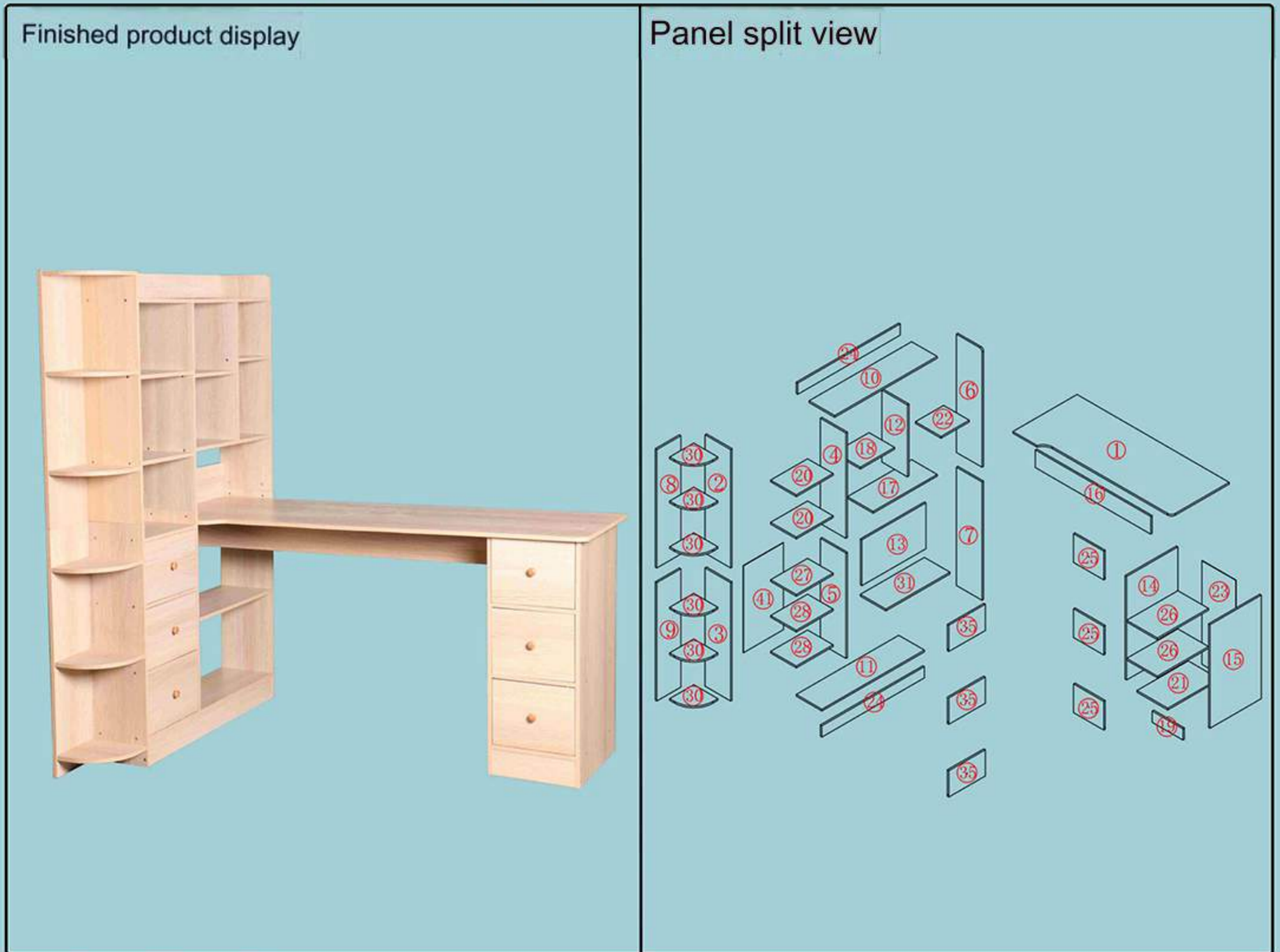


# GD008 Installation Instruction

Please be sure to use a manual screwdriver and refrain from using an electric drill.



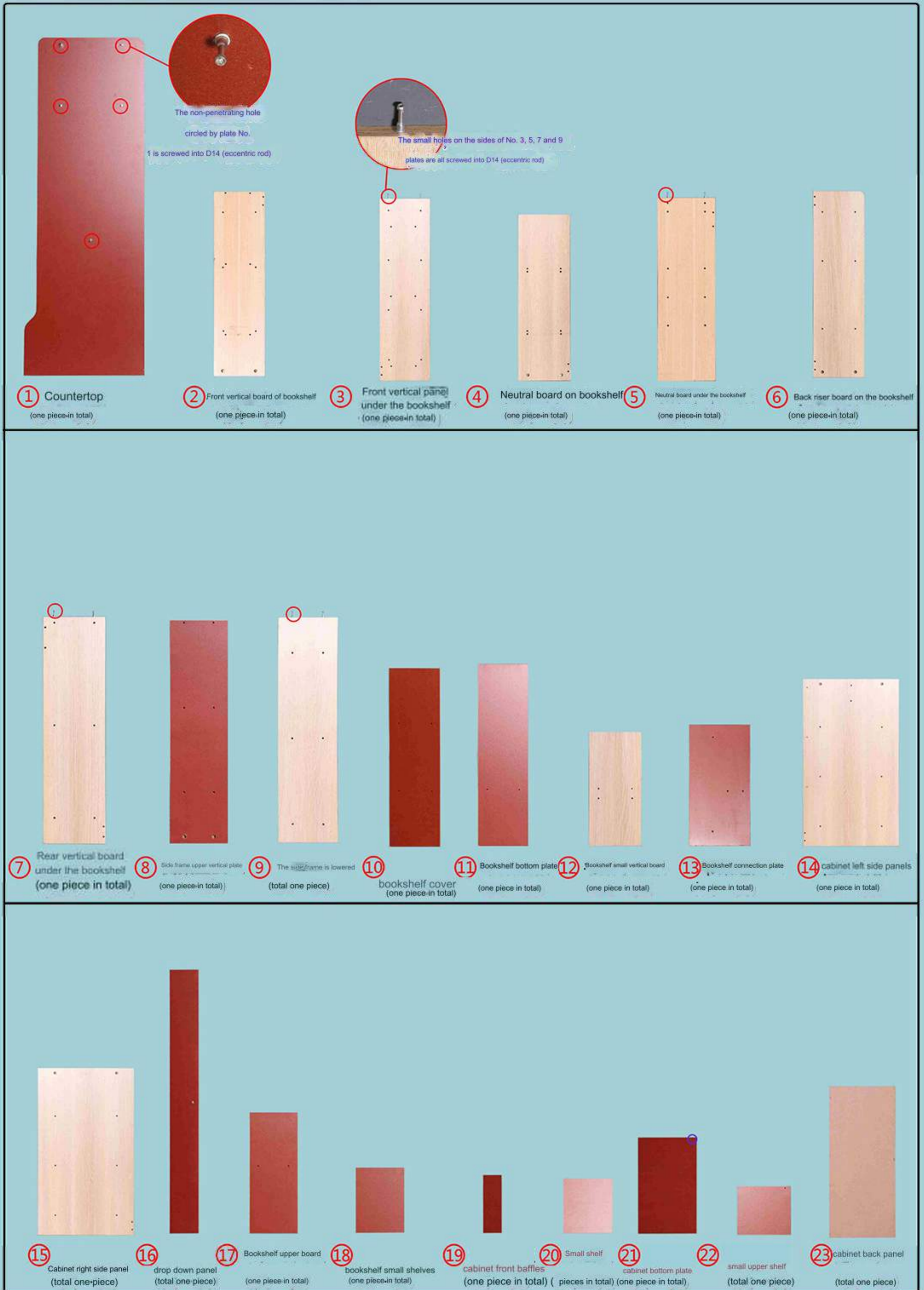
Product accessories and quantity:

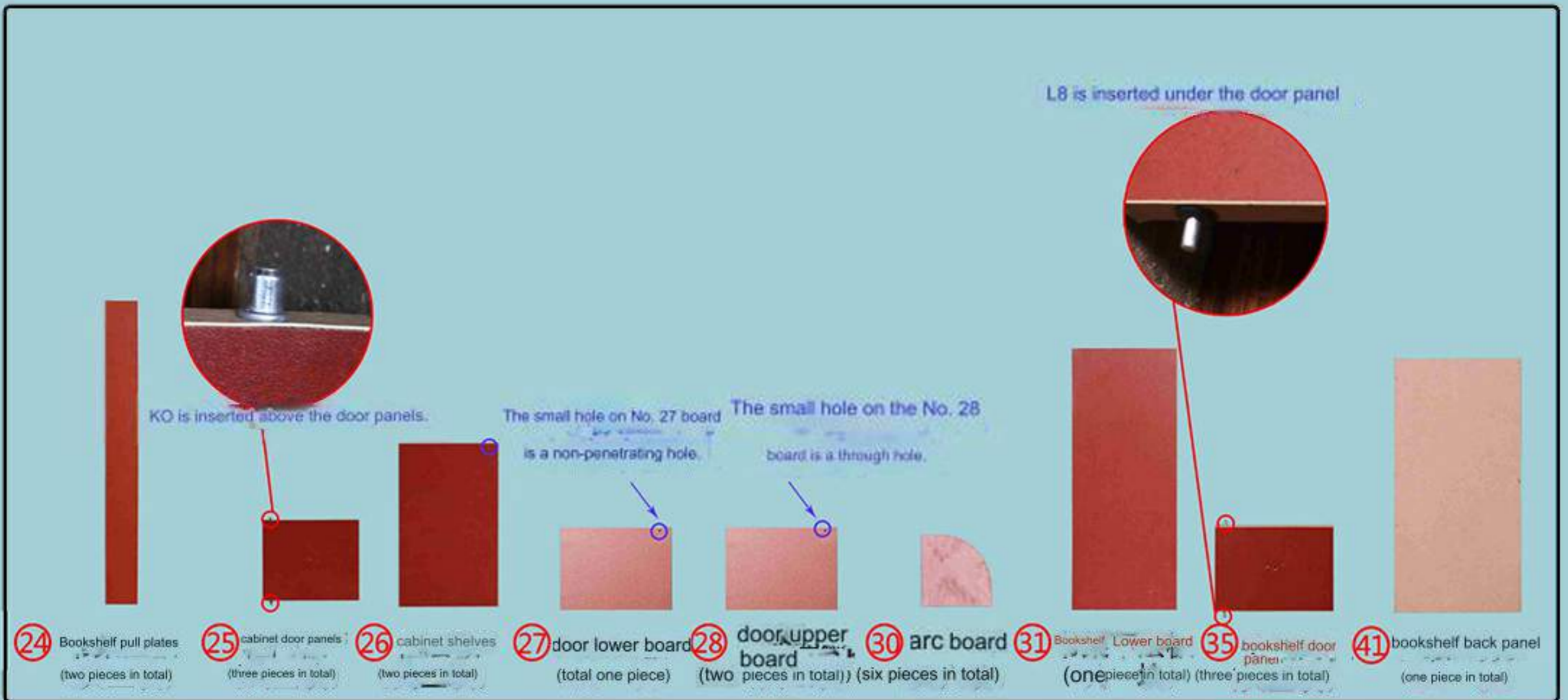
Eccentric wheel + eccentric rod	iron shelf pin	Spring spacer pin	small nails	Original color wood handle	4*40 self-tapping screws	4*18 handle screw	screwdriver
D14 × 15	K0 × 14	L8 × 6	K20 × 21	J11 × 6	B4 × 120	B0 × 7	1

Kind tips:

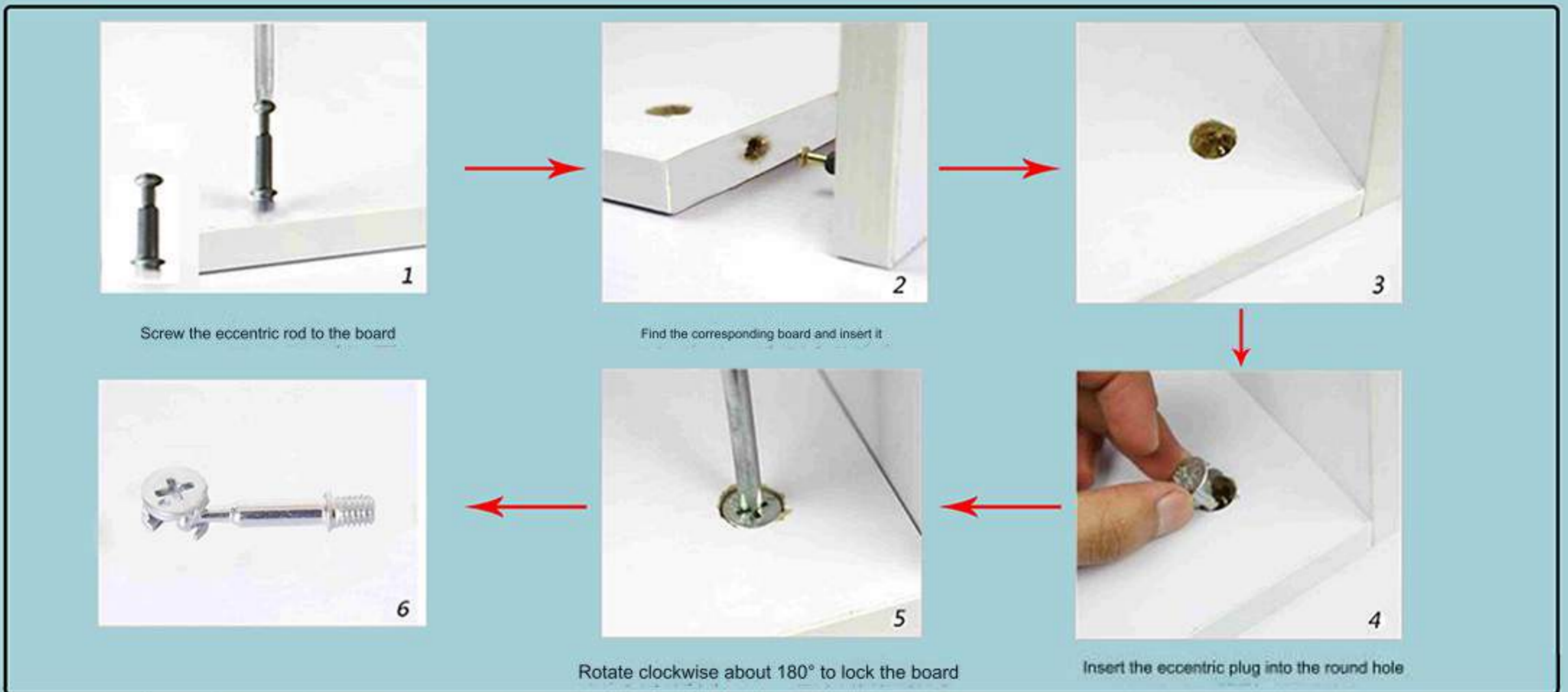
1. Please distinguish the boards according to the drawings when installing.
2. Tighten the screws 70%, and then tighten them again after everything is completed!
3. Some boards have a red side, and the red side faces down or inward.
4. Please refer to the actual product for product color. The contents shown in the manual are for reference only.

Product name and serial number:

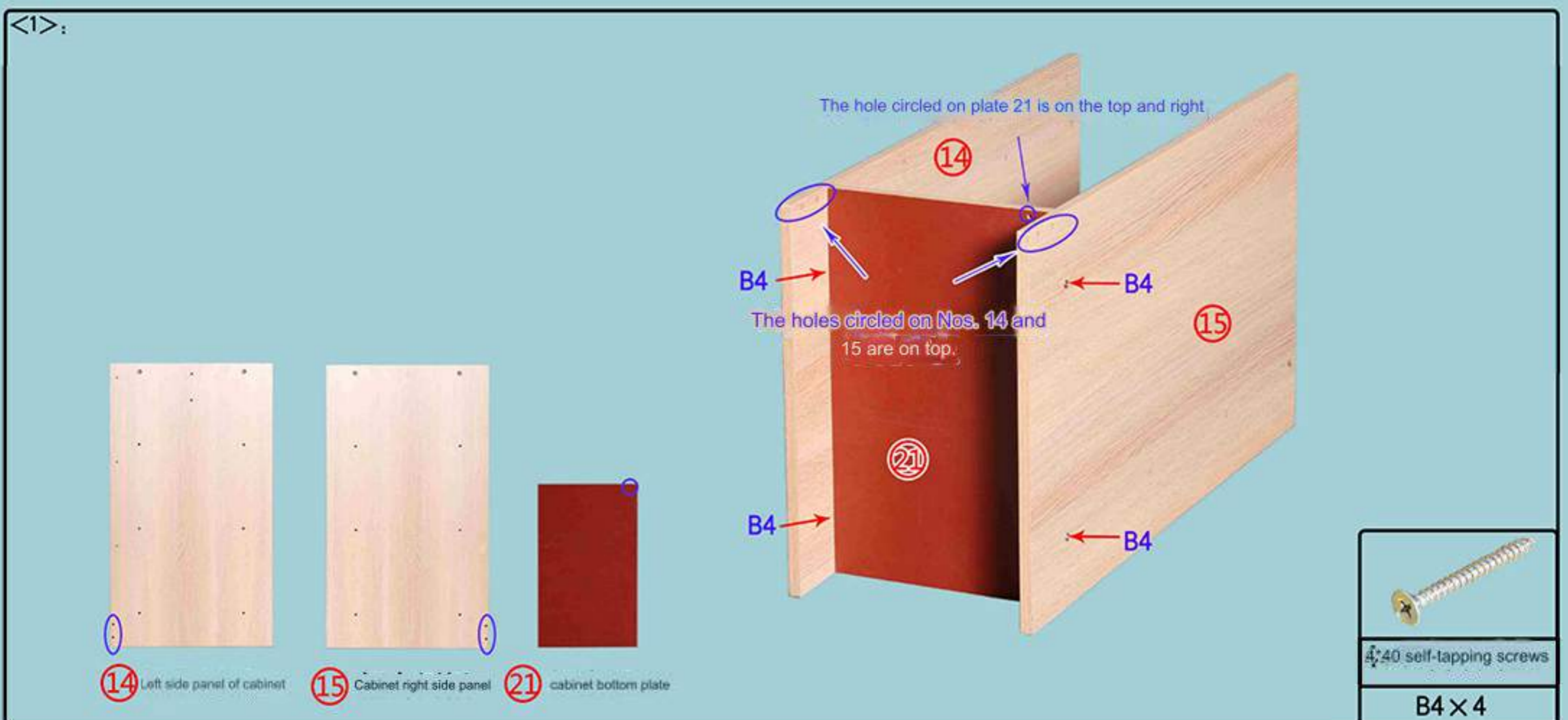


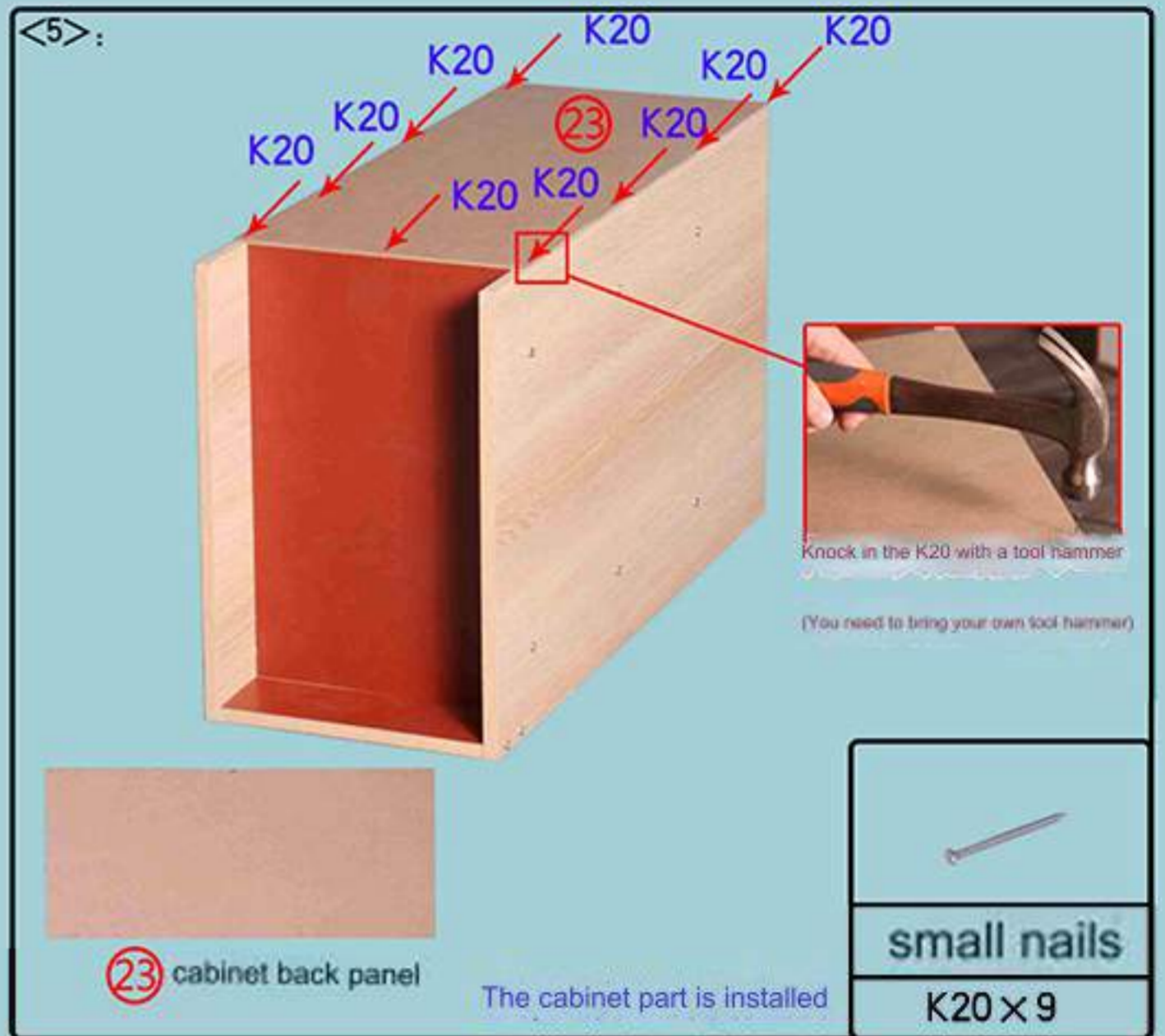
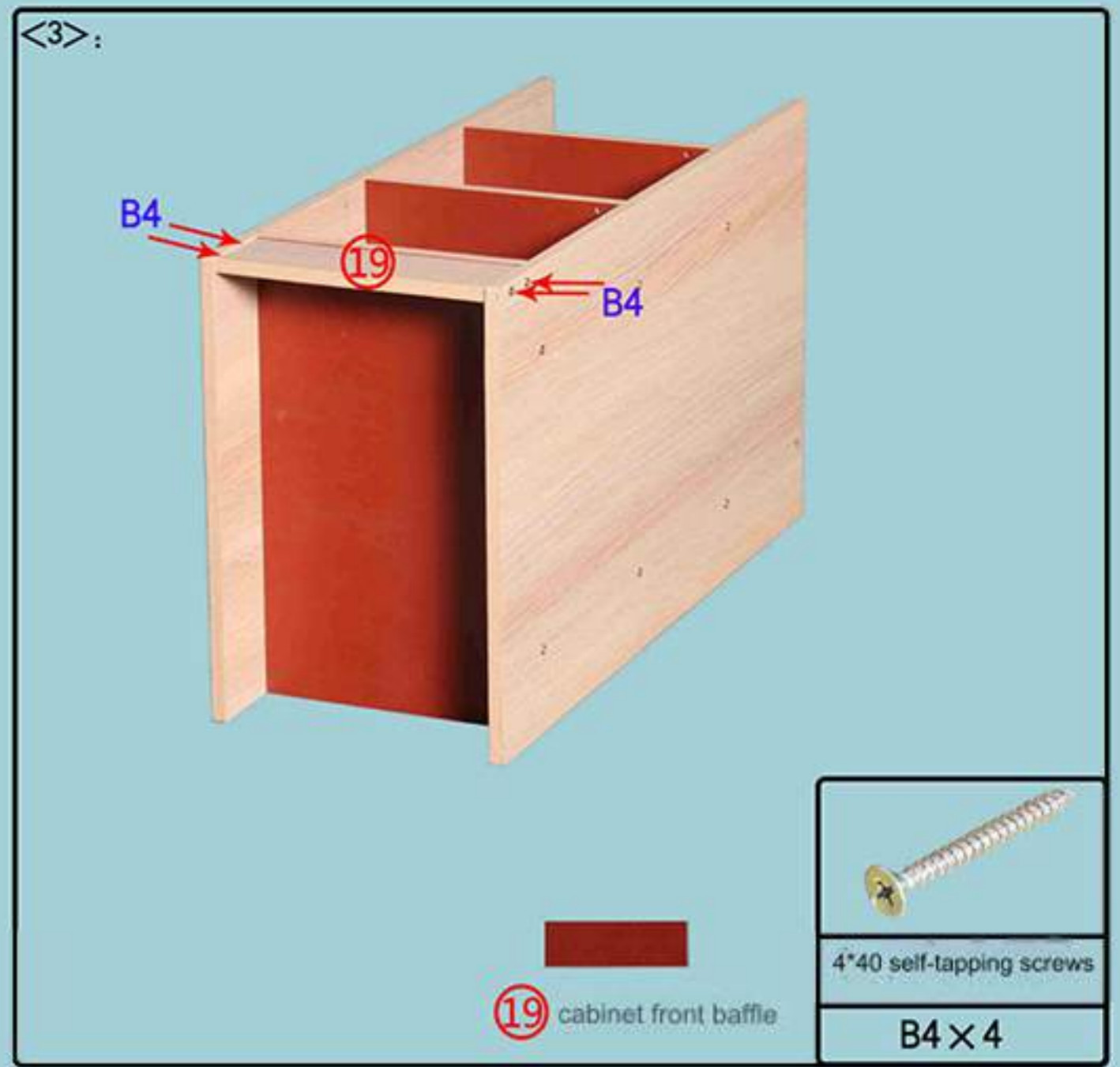
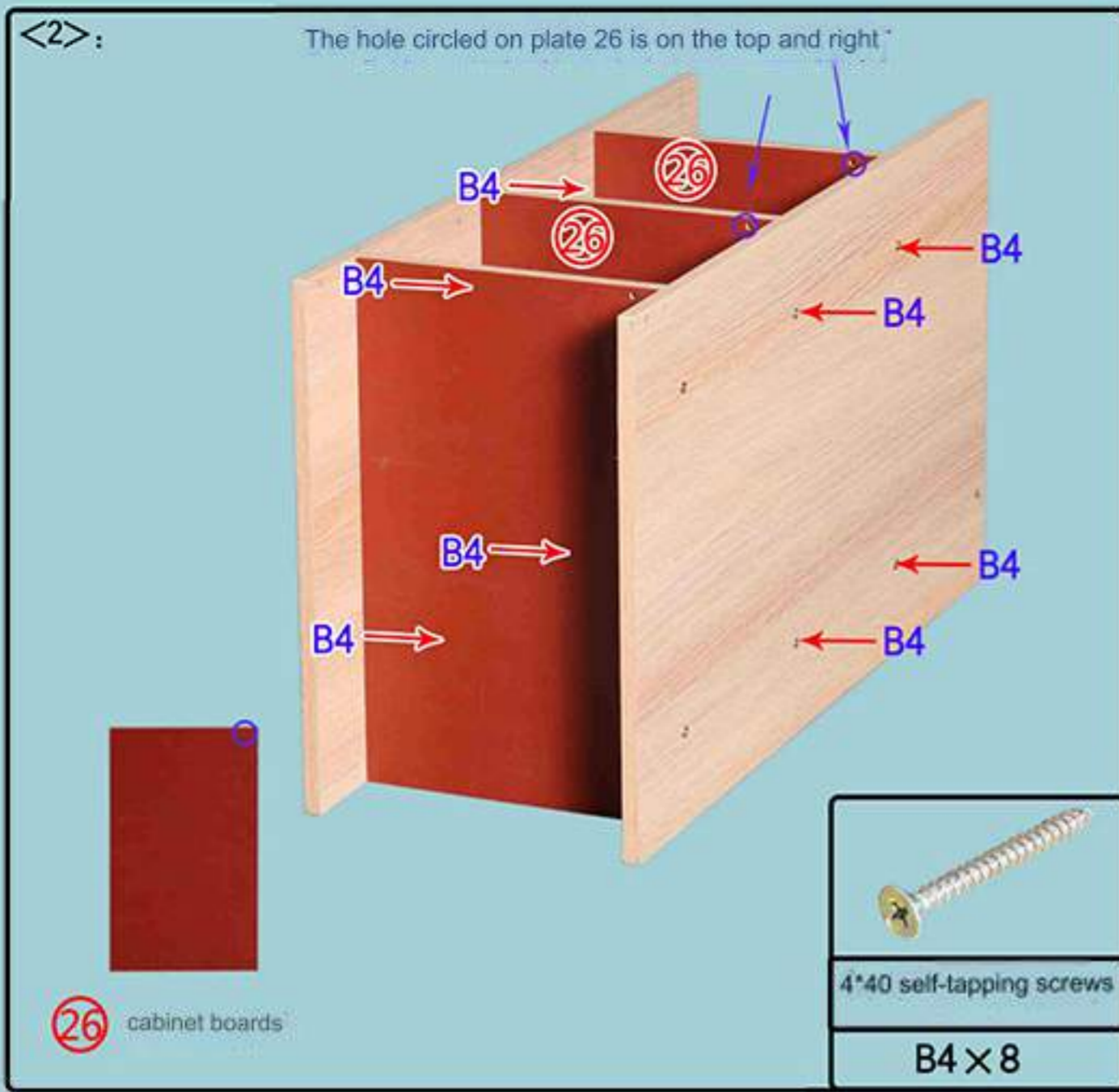


Installation principle of eccentric parts:



Start the installation; Step 1: Install the cabinet part as follows:





Step 2: Install the upper part as follows:



<2>:

**22** Small upper board

4\*40 self-tapping screws

B4 x 4

<3>:

The small hole circled on plate No. 4 is below

**4** Neutral board on bookshelf

4\*40 self-tapping screws

B4 x 2

<4>:

**18** Small shelves for bookshelf

4\*40 self-tapping screws

B4 x 4

<5>:

**17** Bookshelf upper board

4\*40 self-tapping screws

B4 x 6

<6>:

The small hole circled on plate No. 2 is at the bottom and behind

**2** Front vertical board of bookshelf

4\*40 self-tapping screws

B4 x 2

<7>:

**20** small layers

4\*40 self-tapping screws

B4 x 8

<8>: The overall layout is as follows:

**24** bookshelf pull panels

4\*40 self-tapping screws

B4 × 4

<9> The whole body tipped backwards

**13** bookshelf connection plate

The small hole circled on plate No. 13 is forward and to the right.

The upper part is installed

4\*40 self-tapping screws

B4 × 4

Step 3: Install the lower part as follows:

<1>:

Circle the small hole on No. 3 board at the top and in front

Circle the small hole on board No. 11 at the top and to the left.

Circle the small hole on the No. 5 plate at the bottom

**3** Front panel under the bookshelf

**5** Neutral panel under the bookshelf

**11** Bottom panel of the bookshelf

4\*40 self-tapping screws

B4 × 4

<2>:

Circle the small hole on board No. 28 on the top and left

**28** door lower deck

4\*40 self-tapping screws

B4 × 8

<3>:

The small hole circled on plate No. 7 is on top

**7** Rear riser under bookshelf

4\*40 self-tapping screws

B4 × 2

<4>:

**24** Bookshelf pull panel

4\*40 self-tapping screws

B4 x 4

<5>:

Circle the small hole on board No. 27 at the top and left

**27** Door upper panel

4\*40 self-tapping screws

B4 x 4

<6>:

**31** Lower shelf of bookshelf

4\*40 self-tapping screws

B4 x 4

<7>: The overall flip is as follows:

**41**: bookshelf back panel

The lower part is installed

small nails

K20 x 10

Step 4: Install the arc bookshelf part as follows:

<1>:

The small hole on the side of No. 8 board is at the bottom

**30** arc plate

**8** side frame upper vertical plate

4\*40 self-tapping screws

B4 x 2

<2>: Install the other two No. 30 boards in the same way.

**30** arc plate

4\*40 self-tapping screws

B4 x 4

<3>:

The small hole on the side of plate No. 9 is at the bottom

4\*40 self-tapping screws

**B4 × 6**

30 Arc plate 9 Side frame lower riser

<4>:

Combine steps two and three

Put in D14 (eccentric wheel) and rotate clockwise to lock the board

D14

Arc bookshelf partially installed

Eccentric wheel + eccentric rod

**D14 × 2**

Step 5: The overall installation is as follows:

<1>:

Combine the upper and lower halves

the top half

the second half

D14

B4

D14

D14

D14

D14

B4

4\*40 self-tapping screws eccentric wheel + eccentric rod

**B4 × 4** **D14 × 6**

<2>:

Arc bookshelf part

B4

B4

B4

B4

B4

B4

B4

B4

B4

B4

B4

B4

B4

4\*40 self-tapping screws

**B4 × 12**

<3>: The overall arrangement is as follows

Note: The eccentric hole on plate No. 16 is on the top

B4

B4

16

Cabinet part

B4

4\*40 self-tapping screws

**B4 × 4**

16 drop down panel



<4>:

① Countertop

4*40 self-tapping screw eccentric wheel + eccentric rod	
B4×6	D14×5

<5>:

1. Align the KO on No. 25 board with the small holes at the bottom of No. 1 and No. 26 boards and insert them.

②5 cabinet door panels

Solid wood salad handle	4*18 handle screw
J11×3	B0×3
iron shelf pin	Spring spacer pin
K0×6	L8×3

2. Press and hold L8 under No. 25 board and push it until it is inside the small holes of No. 21 and No. 26 boards.

KO is inserted into the non-penetrating hole on the 14th board to block the door.

<6>:

In the same way, install No. 35 board into No. 27, 28, and 11 boards.

③5 Bookshelf door panel

<7>: Installation completed