

BS013 Installation Instruction

Please be sure to use a manual screwdriver and refrain from using an electric drill.



Accessories list: Take the 5th floor as an example



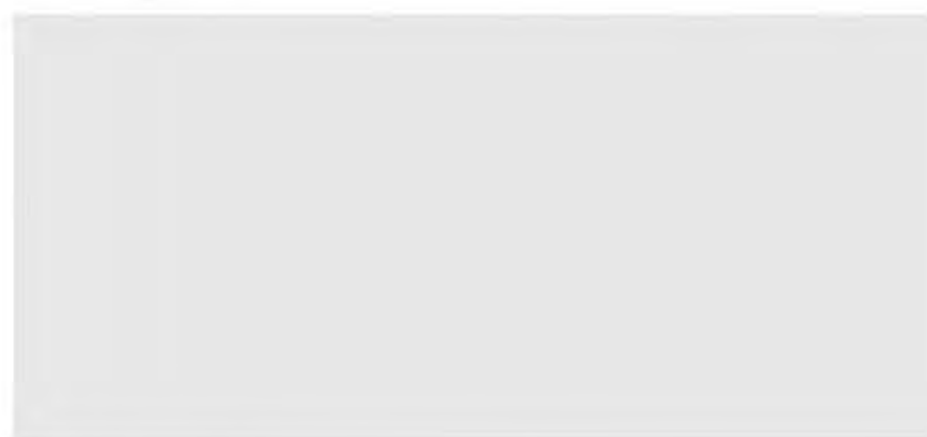
Side bracket left x1



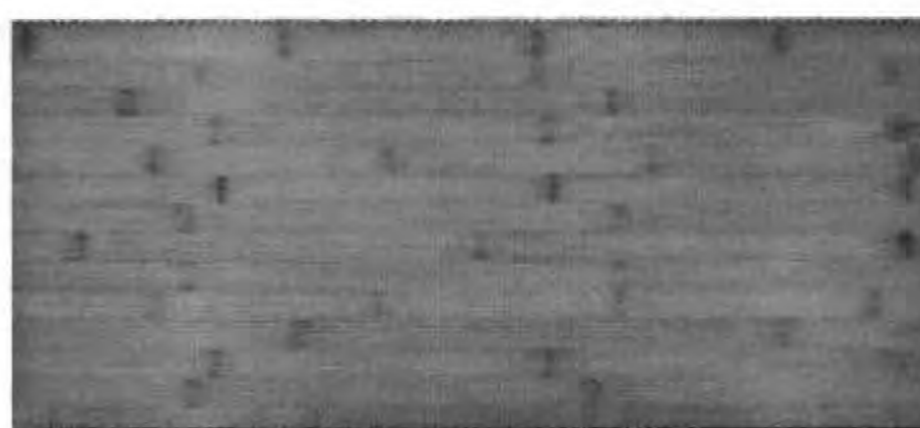
Side stand right x1



Door panel x5



Backplane x5



Top shelf x1 (single side with groove)



Ordinary laminate x5 (with grooves on both sides)



Door stopper x4



Door pull tab x4



Metal card strip



door gasket



Small screws



Medium screw



Large screw



Installation tools

Start assembling



1. Take out the left side bracket and the ordinary shelf and install it with large screws



2. Take out the top shelf and install it with large screws



3. Take out the back plate and insert it along the groove



Don't tighten the front screws yet

4. Take out the side bracket and install it with large screws on the right side

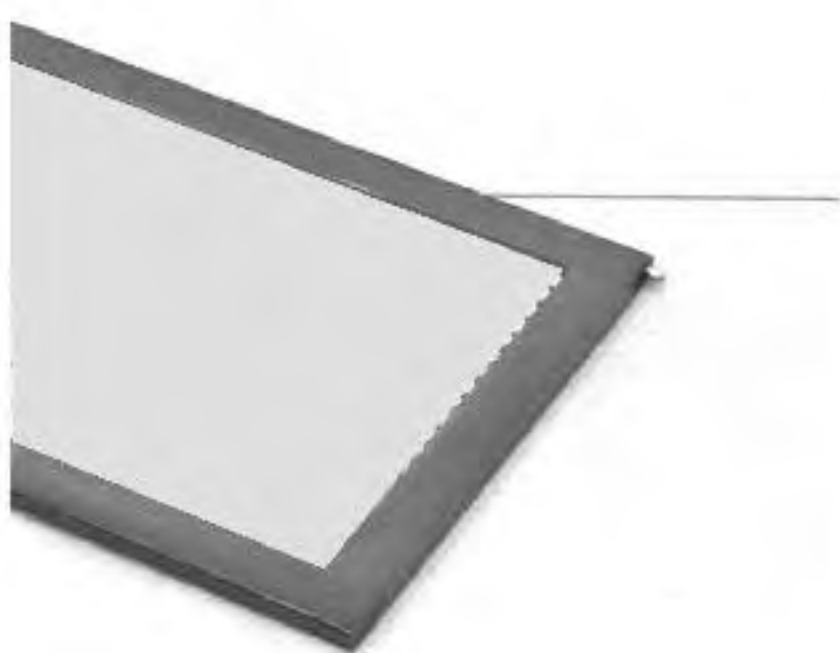


Remember to snap the metal strip into the hole, not the groove

5. Take out the metal strip and insert it into the groove of the side bracket



6. Take out the door panel, door gasket and door pull ring and install them with medium screws



7. Take out the door panel and insert metal clips on both sides of the door bolt.



Since the screws in step 4 are not tightened, you can gently open the side bracket.

8 Gently open the right side bracket, then insert the door panel into the groove of the side bracket, and then tighten the screw on the right side of the side bracket.



9. Take out the door sucker and install it with small screws. The side of the door sucker with the metal strip faces forward.