



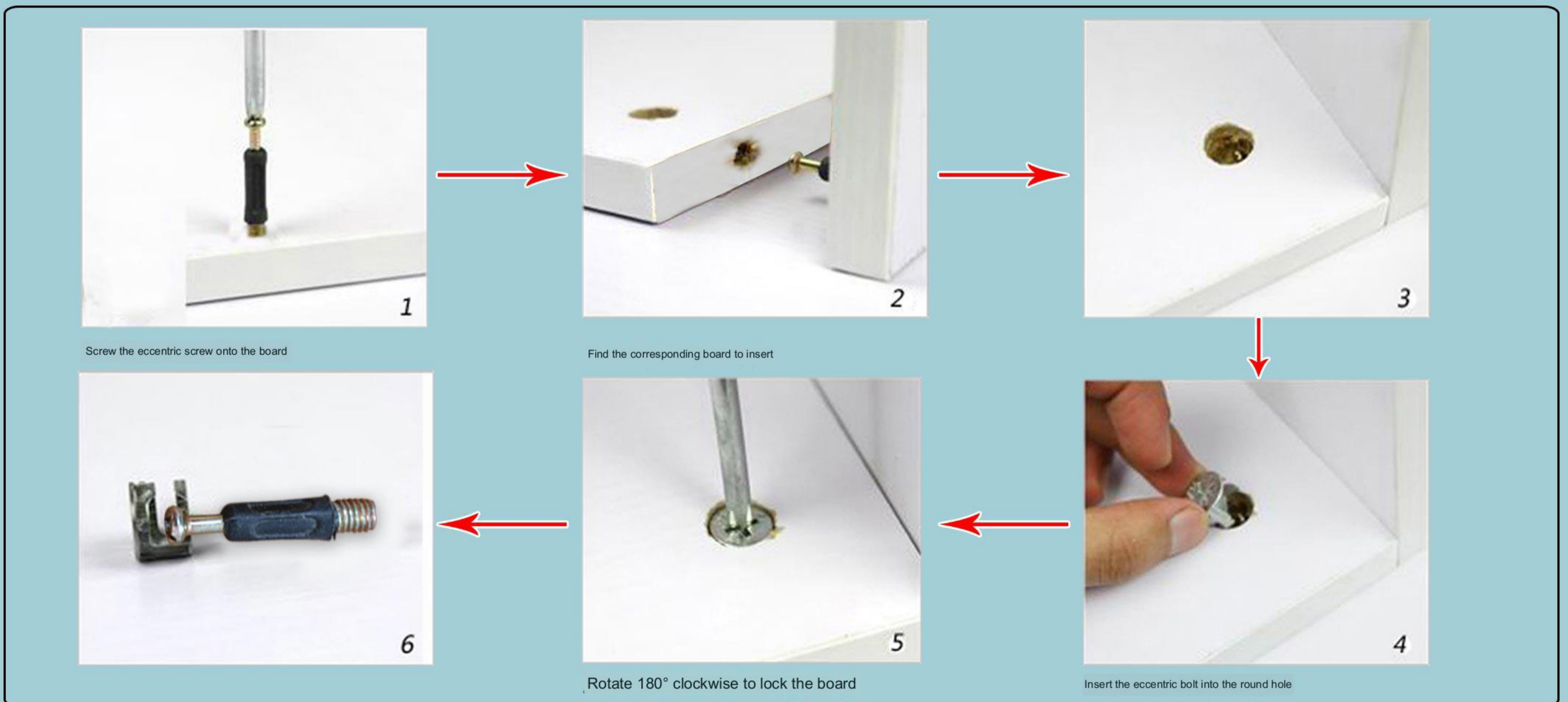


CD002 Installation Instruction

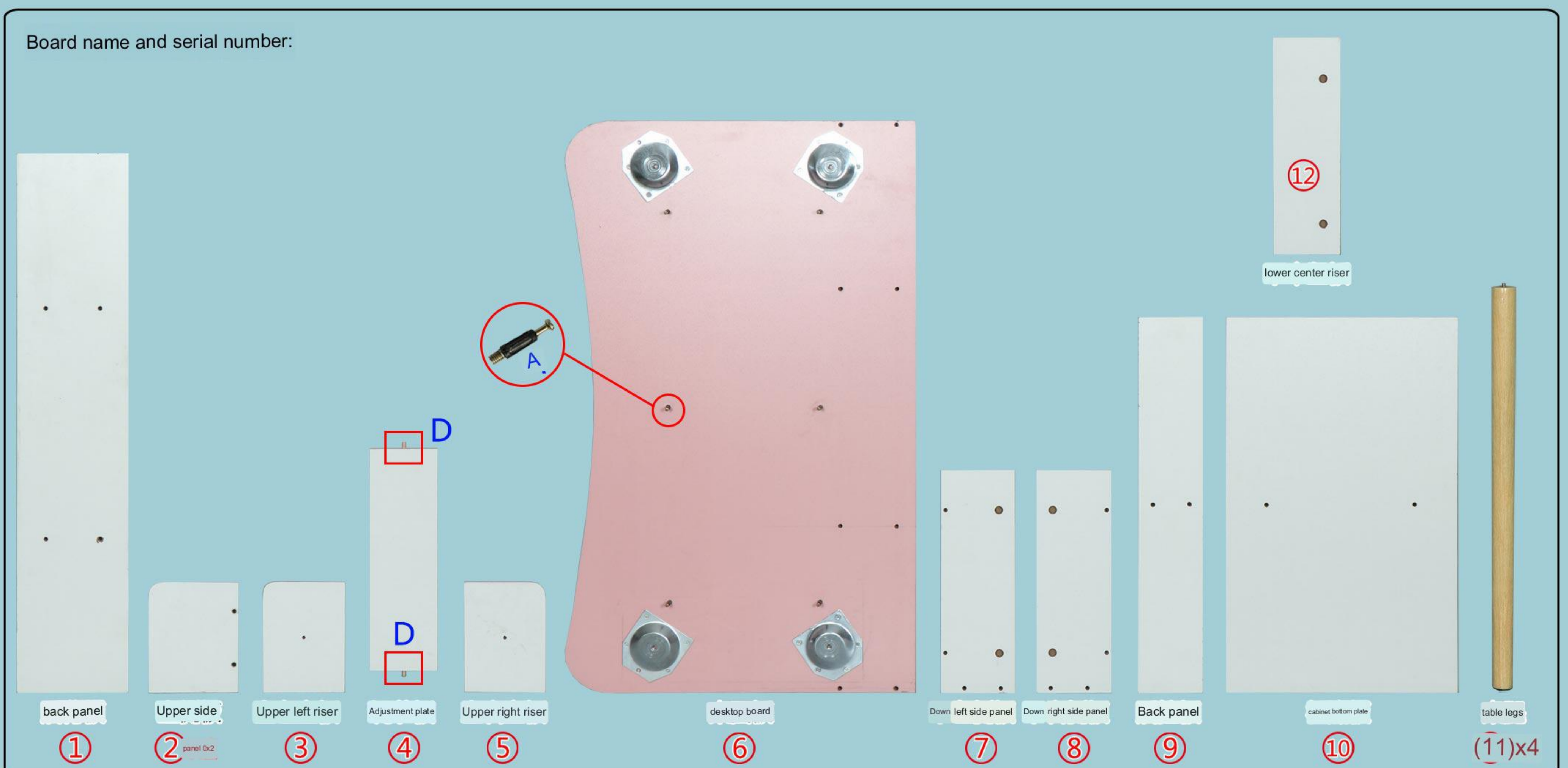
			
A*6	B*6	C*28	D*2
Eccentric screw Eccentric bolt 4CM pointed screw			cork

Kind tips:
Tighten it when you're all done!

Eccentric installation principle:

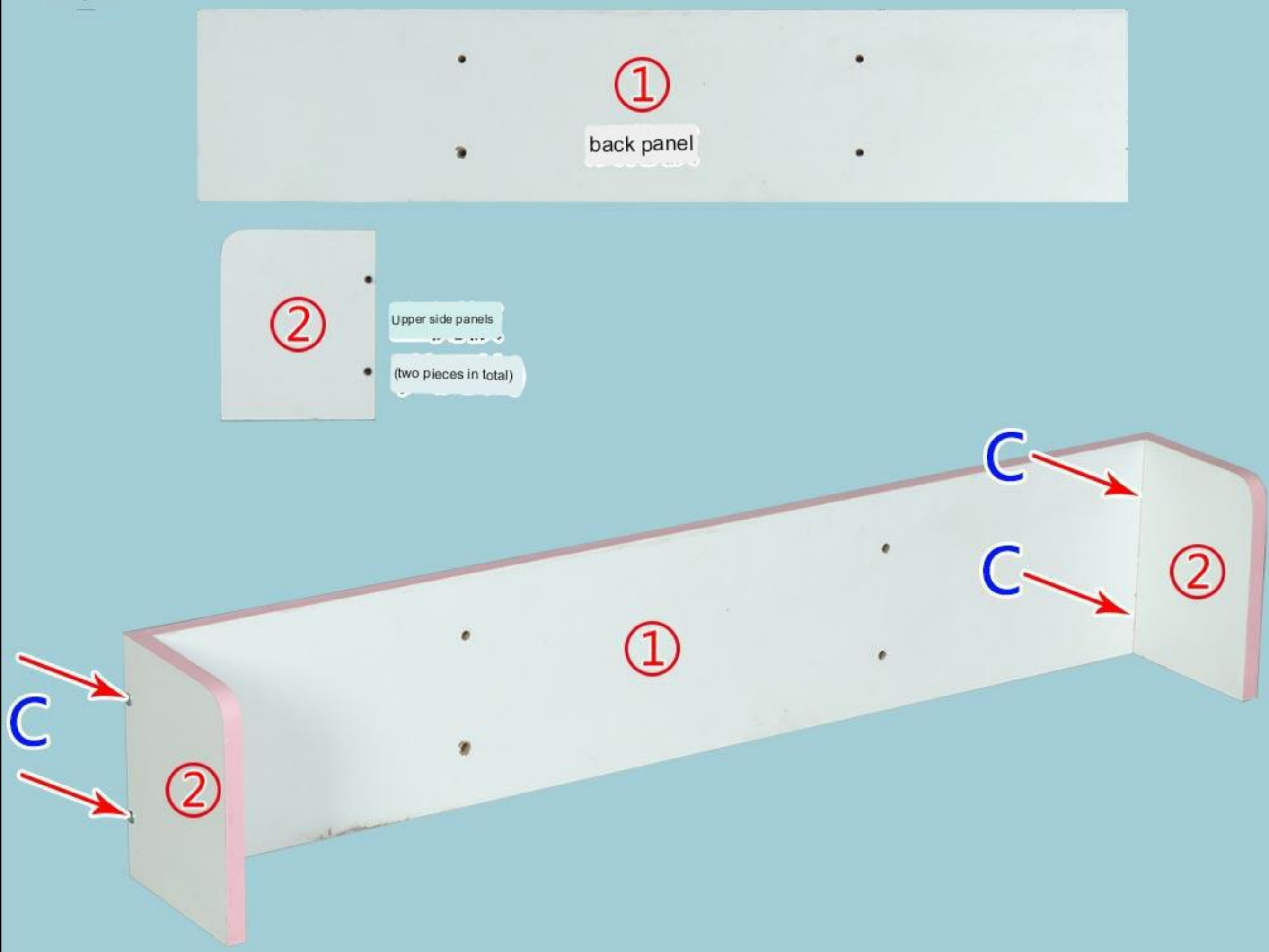


installation steps:

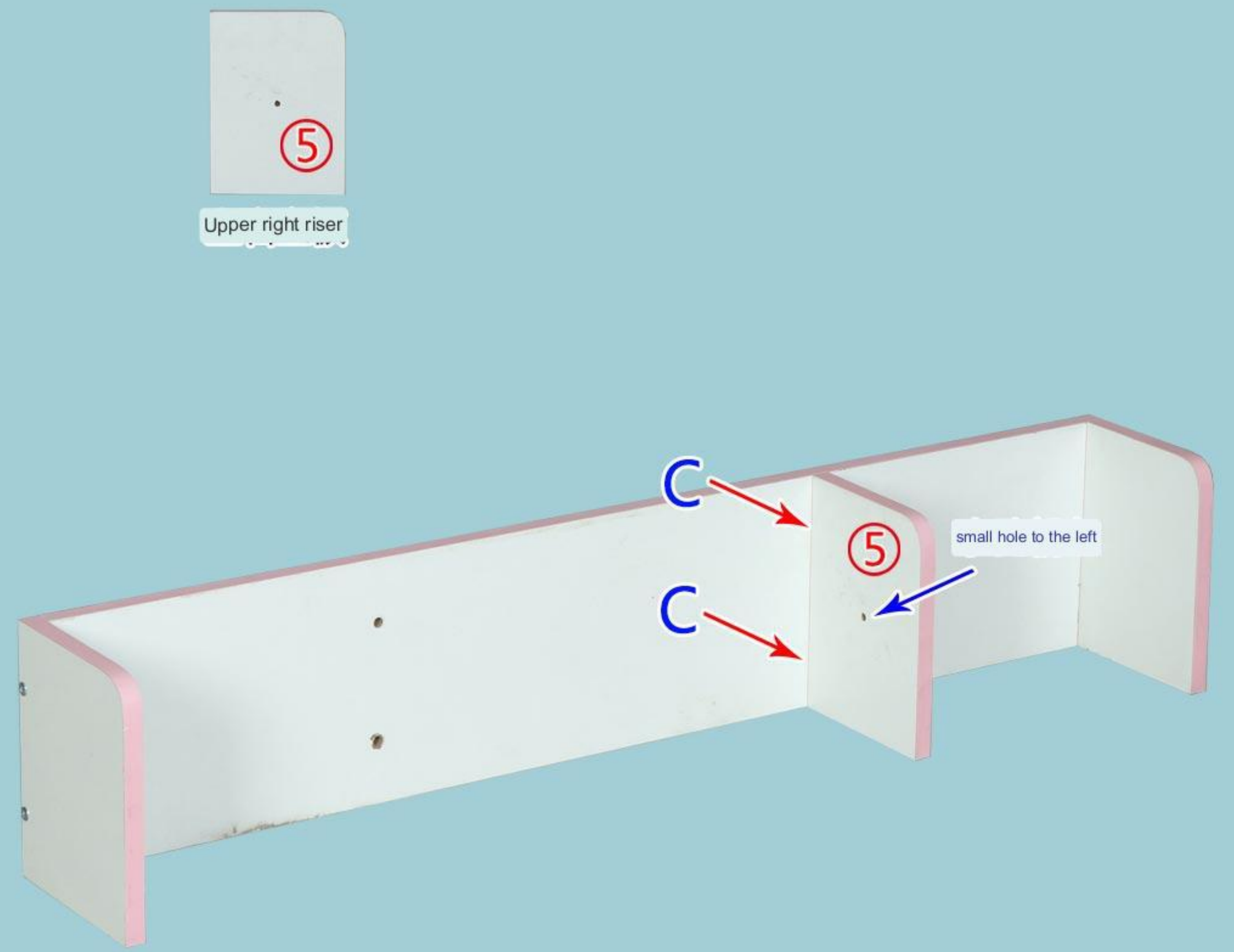


Step 1: Whole Parts Installation

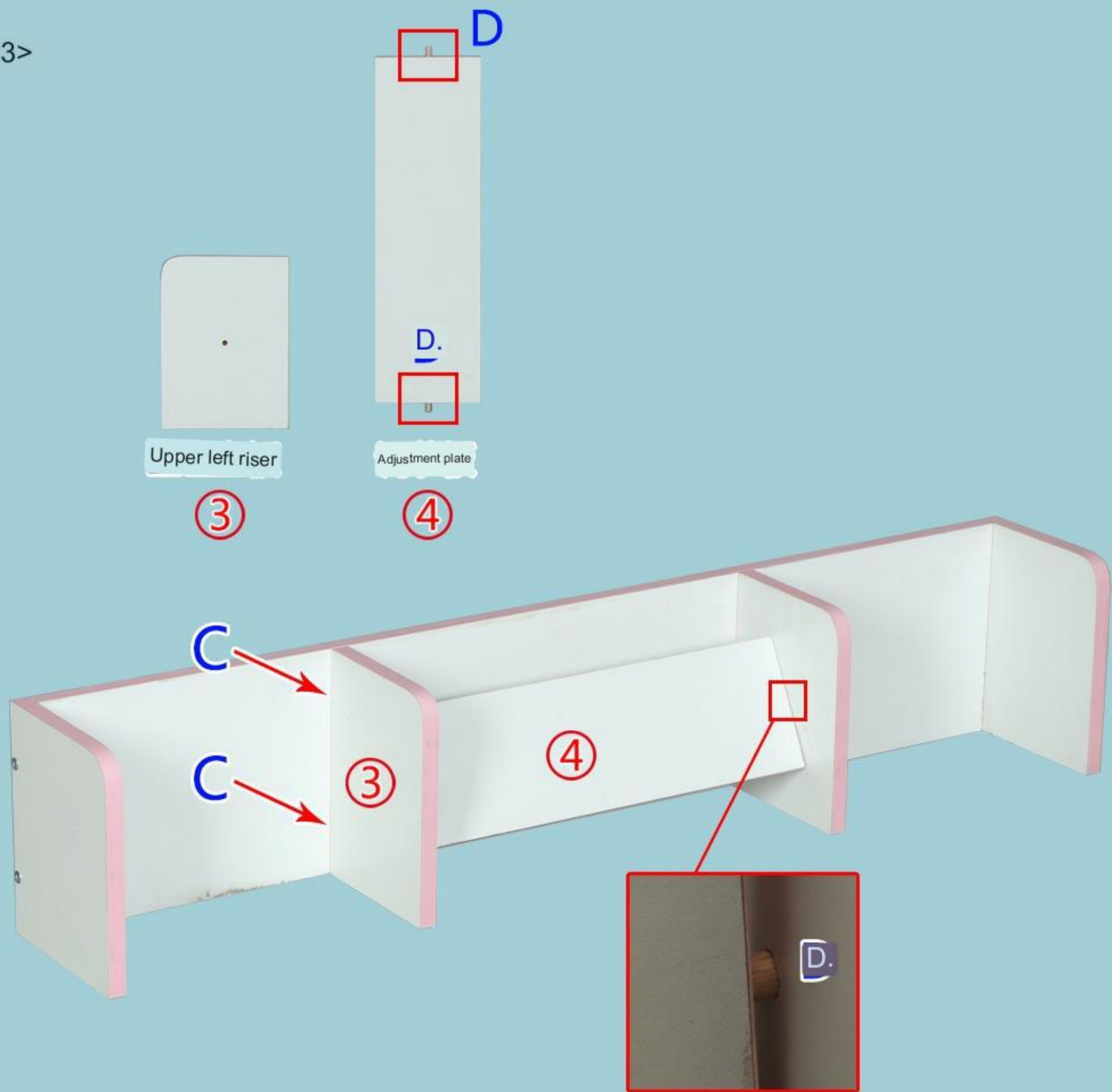
<1>



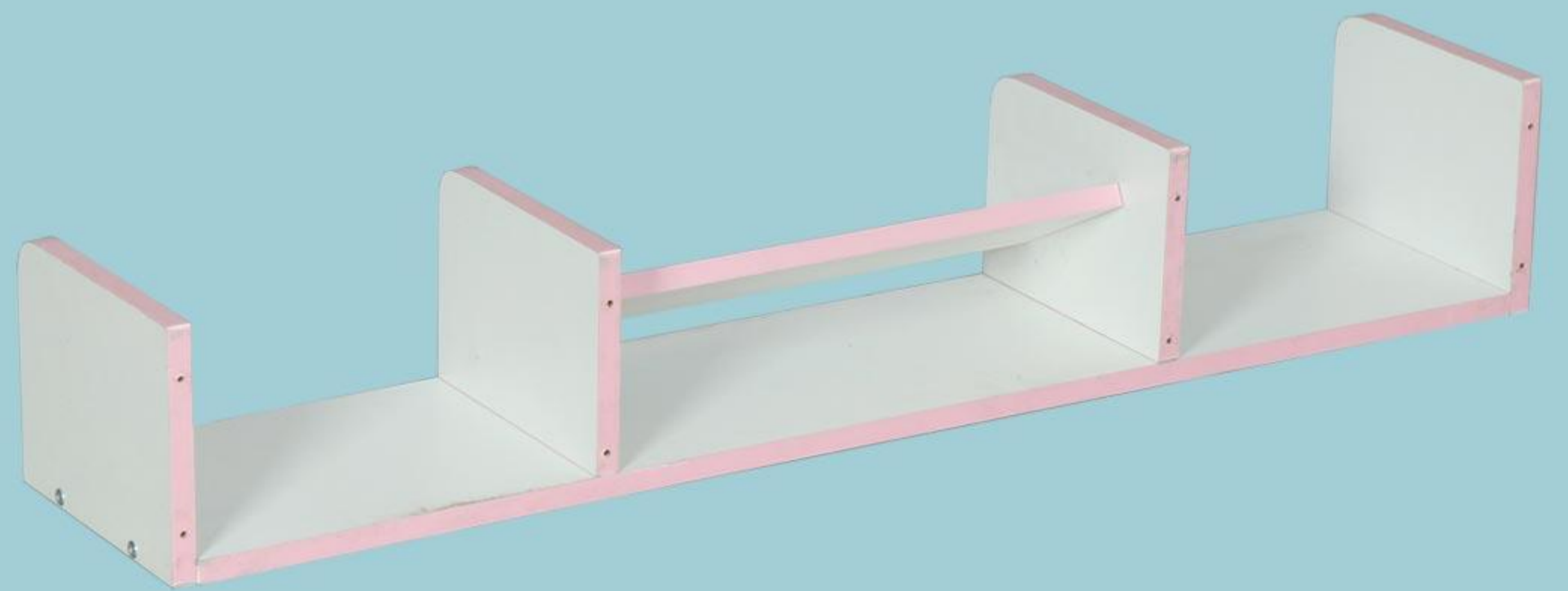
<2>



<3>



<4>Overall backward 90 degrees



<5>

