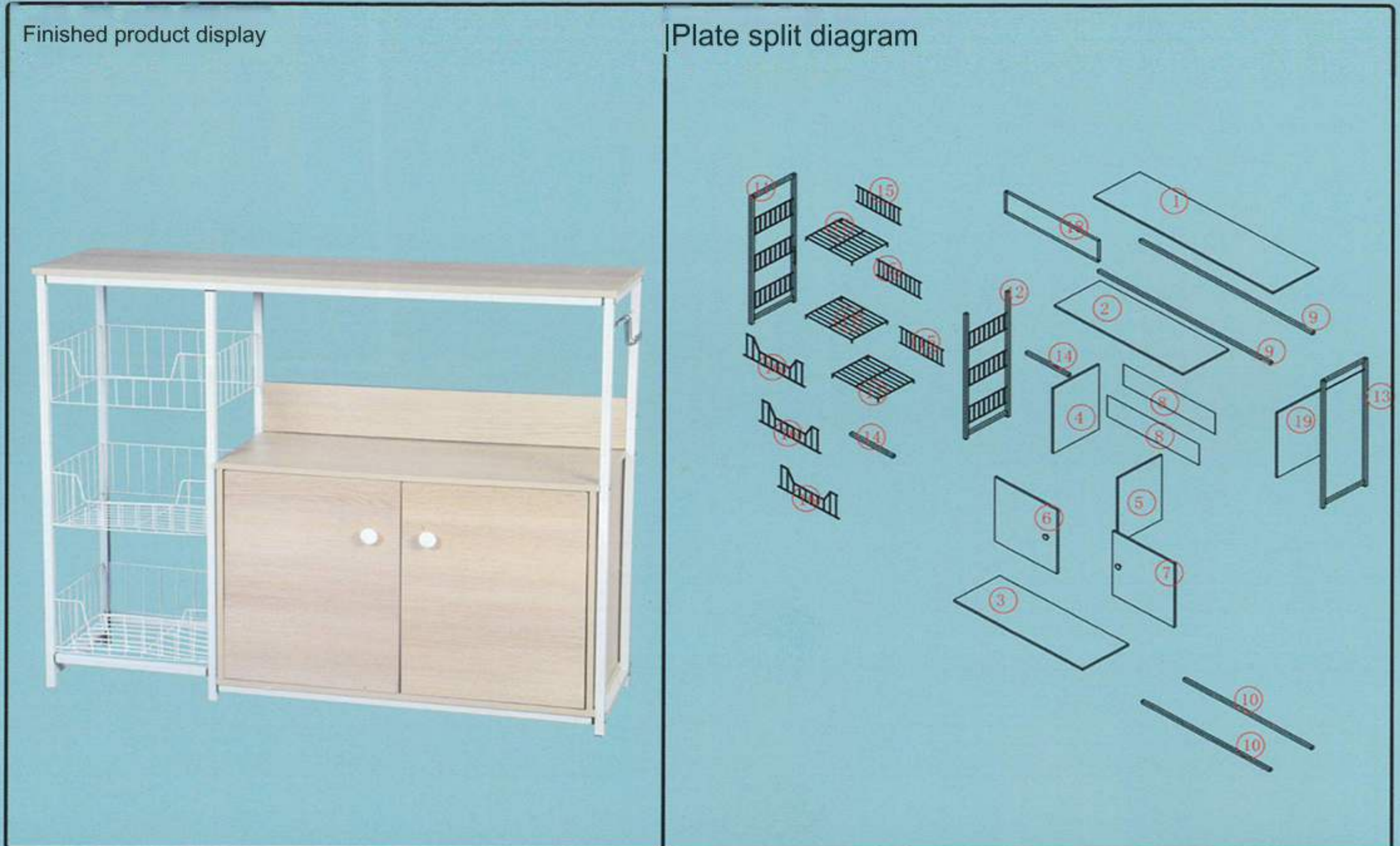


# WCK006-120CM



Please be sure to use a manual screwdriver and refrain from using an electric drill.



Product accessories and quantity:

6*35 flat head screws	6*20 flat head screws	Plastic bulkhead	3.5*12 self-tapping screws	Eccentric wheel + eccentric rod	iron shelf pin	4*16 handle screw	Built-in door catch	Single hole door iron absorber
E6×13	E2×9	N19×7	A1×3	D14×7	K0×3	B8×3	L18×2	L19×2
Spring spacer pin	5*40 pointed screws	small nails	hook up	Xiaobai holds hands	4*40 self-tapping screws	screwdriver		
L8×2	C1×14	K20×20	S29×4	J0×2	B4×7	1		

## Kind tips:

1. Please distinguish the boards according to the drawings when installing.
2. Tighten the screws 70%, and then tighten them again after everything is completed!
3. Some boards have a red side, and the red side faces down or inward. 4. Please refer to the actual product for product color. The contents shown in the manual are for reference only.

Screw the D14 (eccentric rod) into the non-penetrating holes on the No. 2 board. Do not tighten any screws in the small holes circled in blue.

Use A1 to fix L19 at the pinhole mark on the door panel, and insert KO at the top of the door panel.

Note: Board No. 5 is narrower than Board No. 4.

① Cover plate (one piece in total)

② Door upper panel (one piece in total)

③ Base plate (one piece in total)

④ Left side panel (one piece in total)

⑤ Middle vertical board (one piece in total)

⑥ Left door panel (one piece in total)

L8 is inserted under the door panel.

Insert N19 plastic bulkheads under No. 11, 12, and 13 steel frames.

short steel pipes

⑦ Right door panel (one piece in total)

⑧ Back panel (two pieces in total)

⑨ Upper steel pipe (two in total)

⑩ Lower steel pipe (two in total)

⑪ Left steel frame (one in total)

⑫ Medium steel frame (one in total)

⑬ Right steel frame (one in total)

⑭ short steel pipes (two in total)

⑮ H-shaped grid (three in total)

U-shaped grid

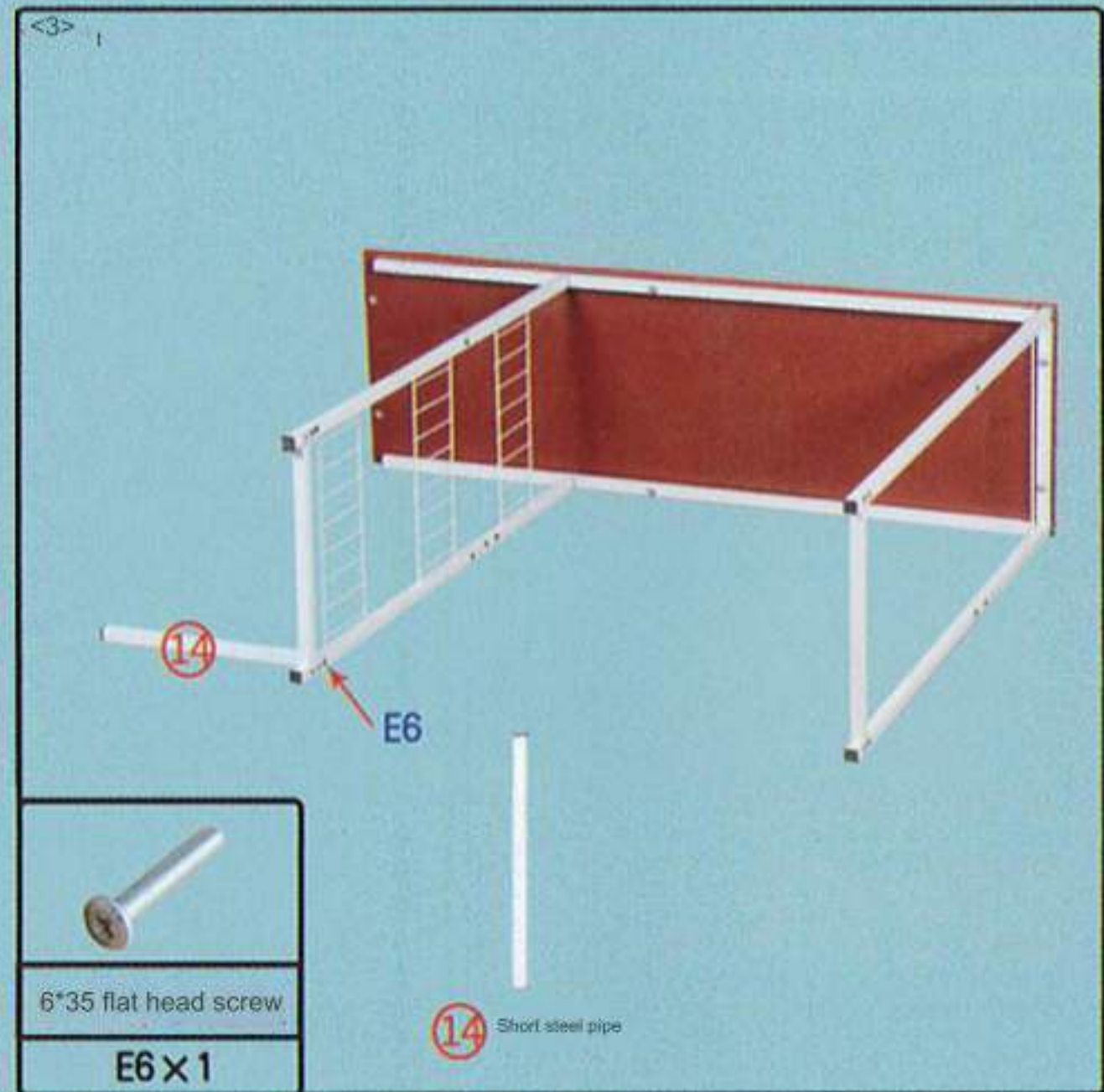
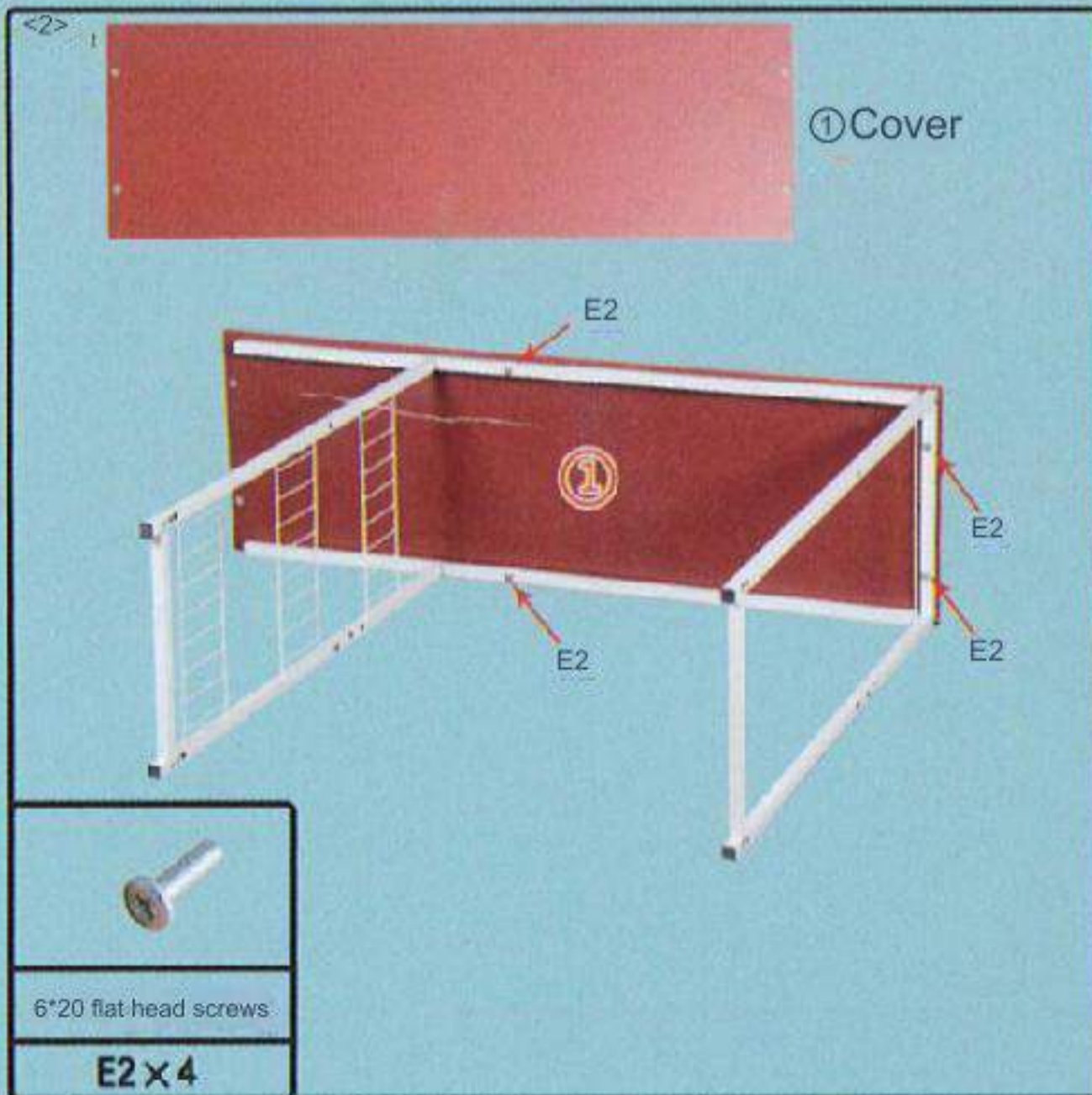
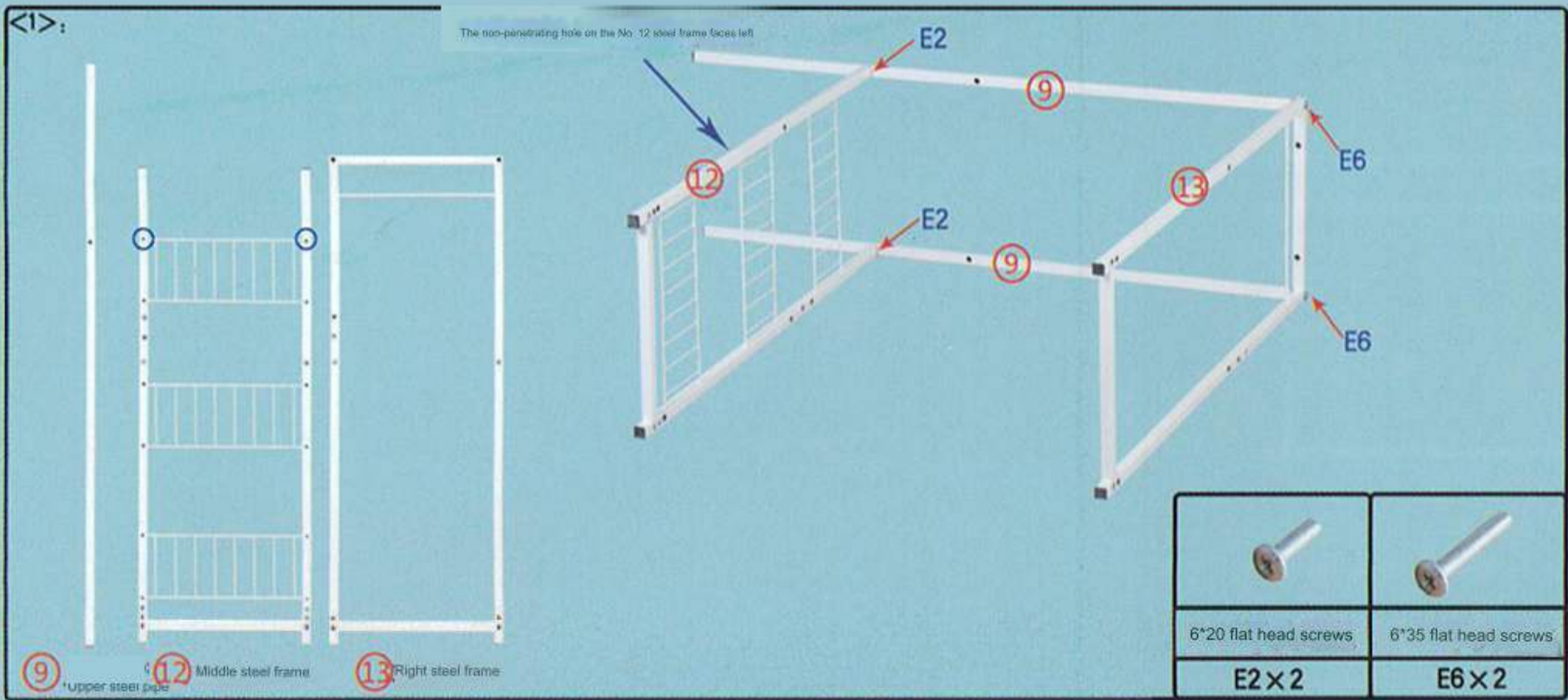
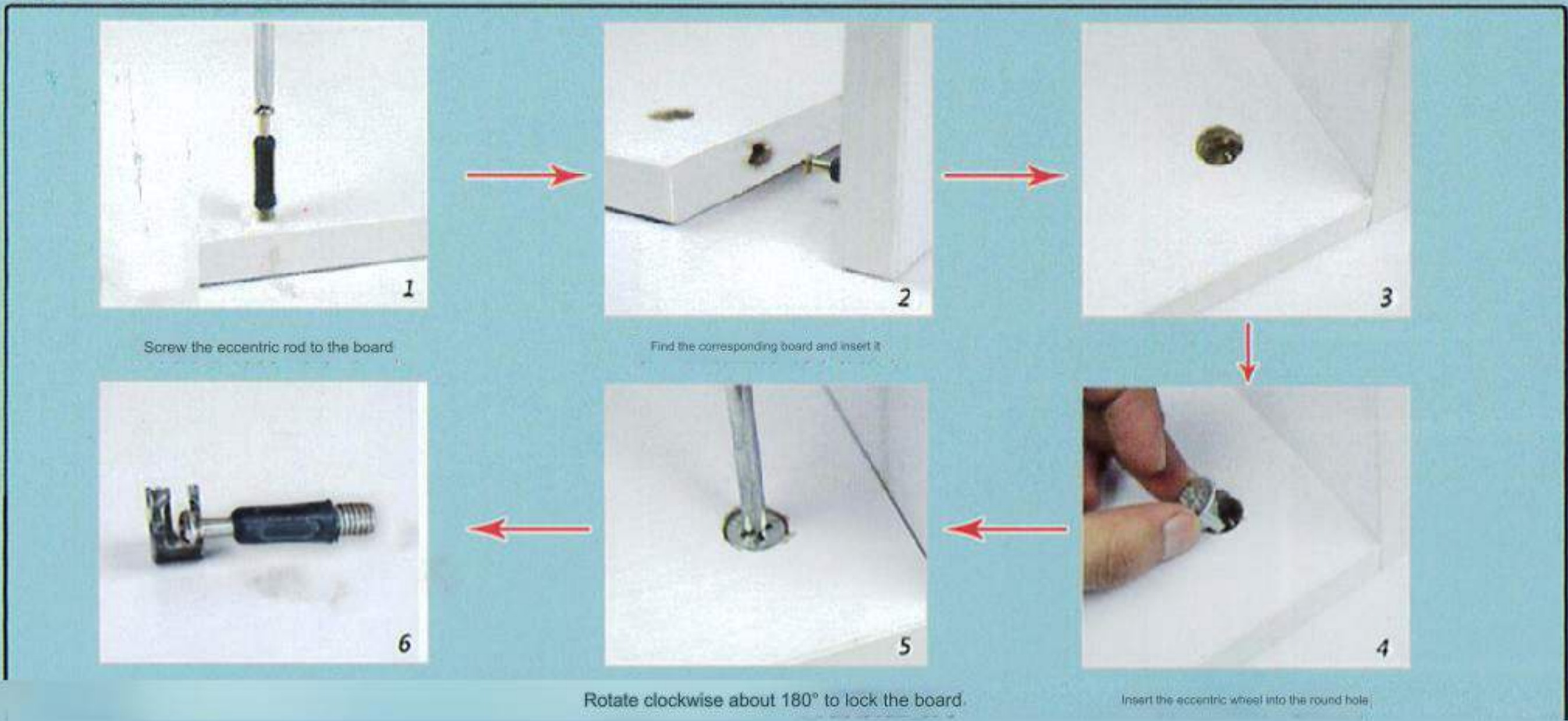
⑯ U-shaped grid (three in total)

⑰ Net negatives (three in total)

⑱ Rear pull plate (one piece in total)

⑲ Right side panel (one piece in total)

Installation principle of eccentric parts:



<<4>: Insert the No. 15 H-type grid into the non-penetrating hole of the No. 12 steel frame:

**15** H-shaped grid

<<5>:

**14** short steel pipes

First fix the No. 11 steel frame, and then fix the No. 14 steel pipe. The non-penetrating holes on the No. 11 steel frame are facing to the right.

Note: Tighten the screws 70% to facilitate inserting the grid in the next step

**E6** **E2**

**11** Left steel frame

6*35 flat head screws	6*20 flat head screws
<b>E6 × 5</b>	<b>E2 × 2</b>

<<6> Insert the No. 16 U-shaped grid into the non-penetrating holes of the No. 11 and No. 12 steel frames and finally tighten all screws:

**16** U-shaped grid

<<7>:

**18** back pull plate

5*40 pointed screws
<b>C1 × 4</b>

The steel frame part is installed

Step 2: Install the cabinet part as follows:

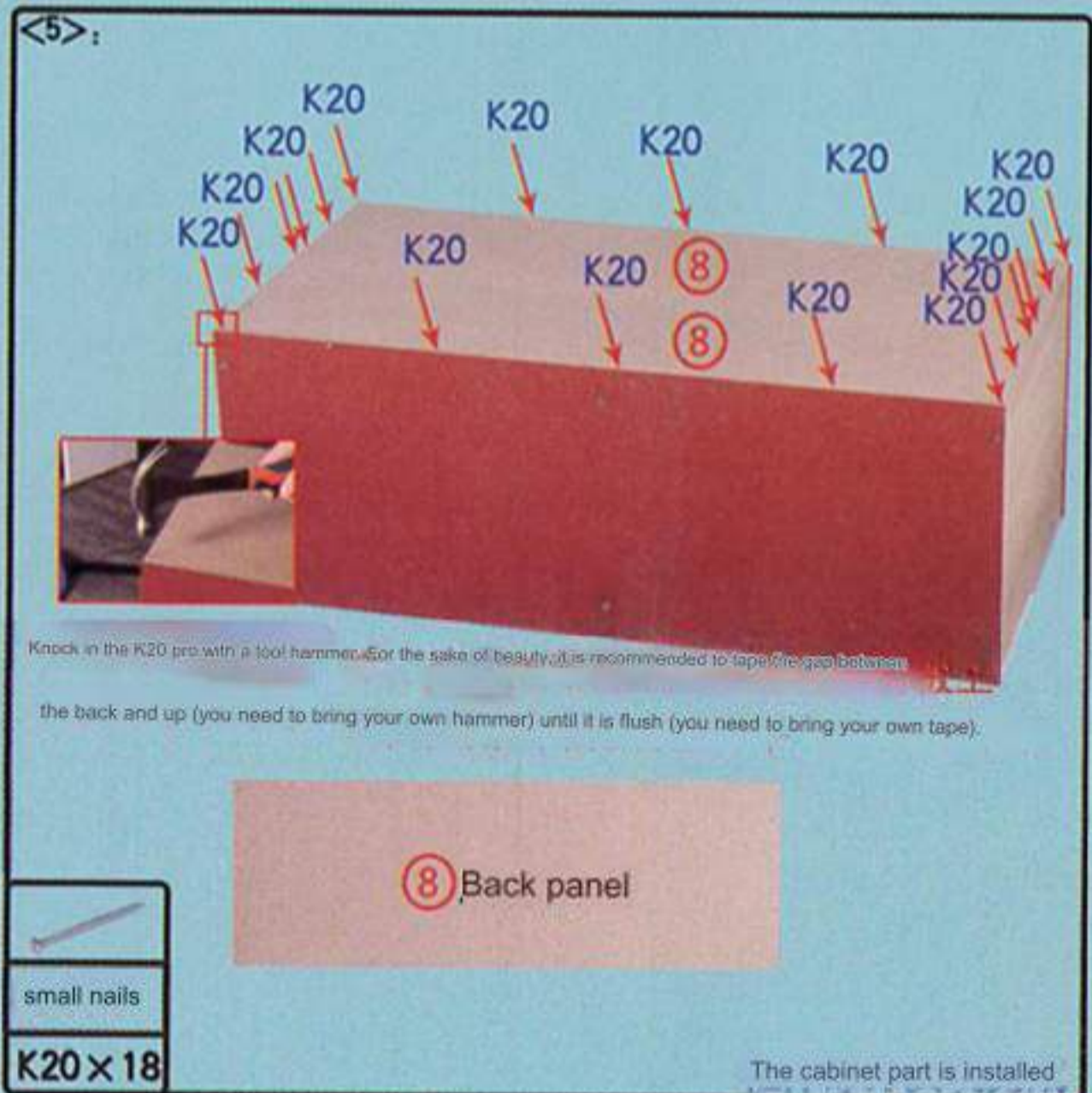
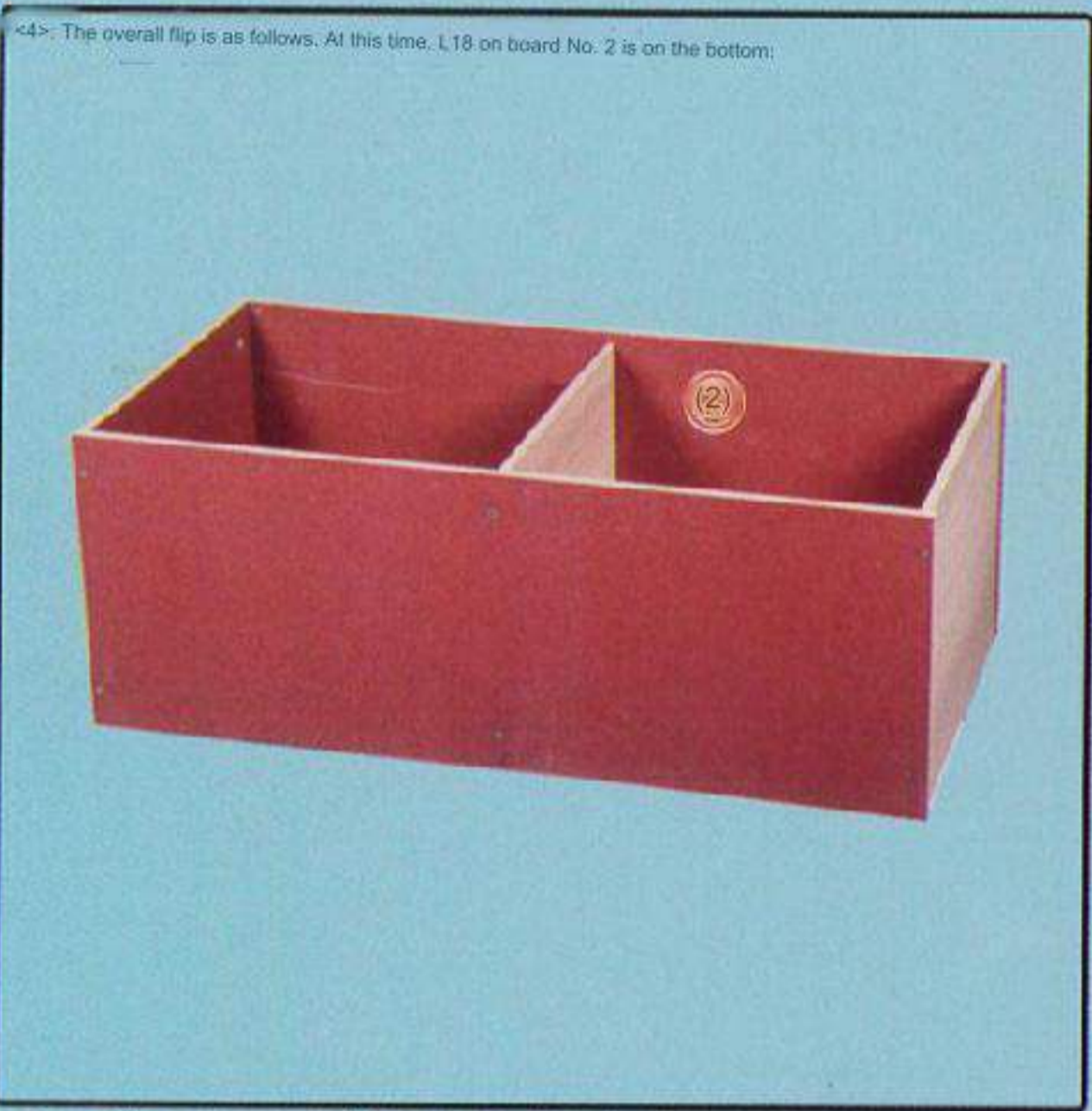
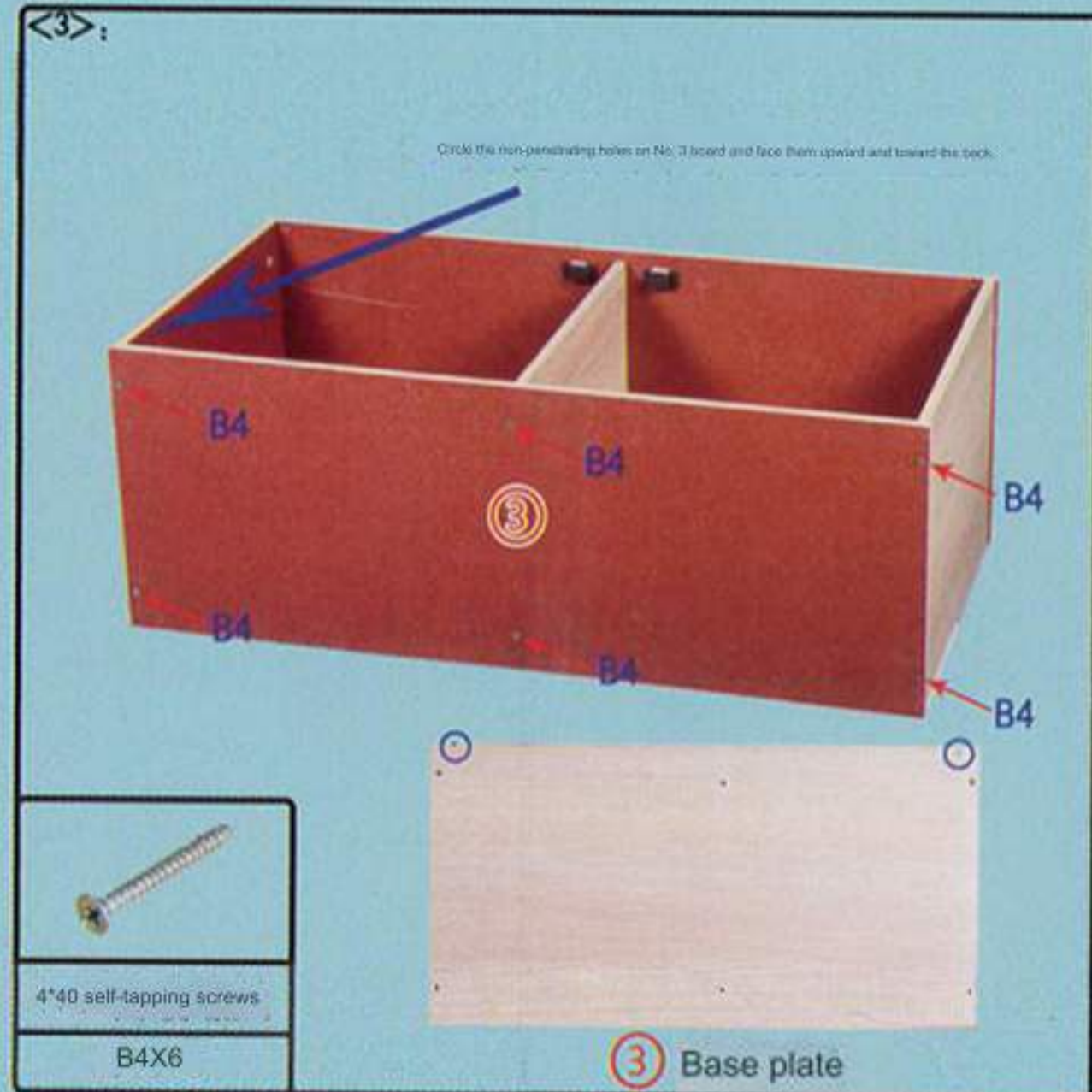
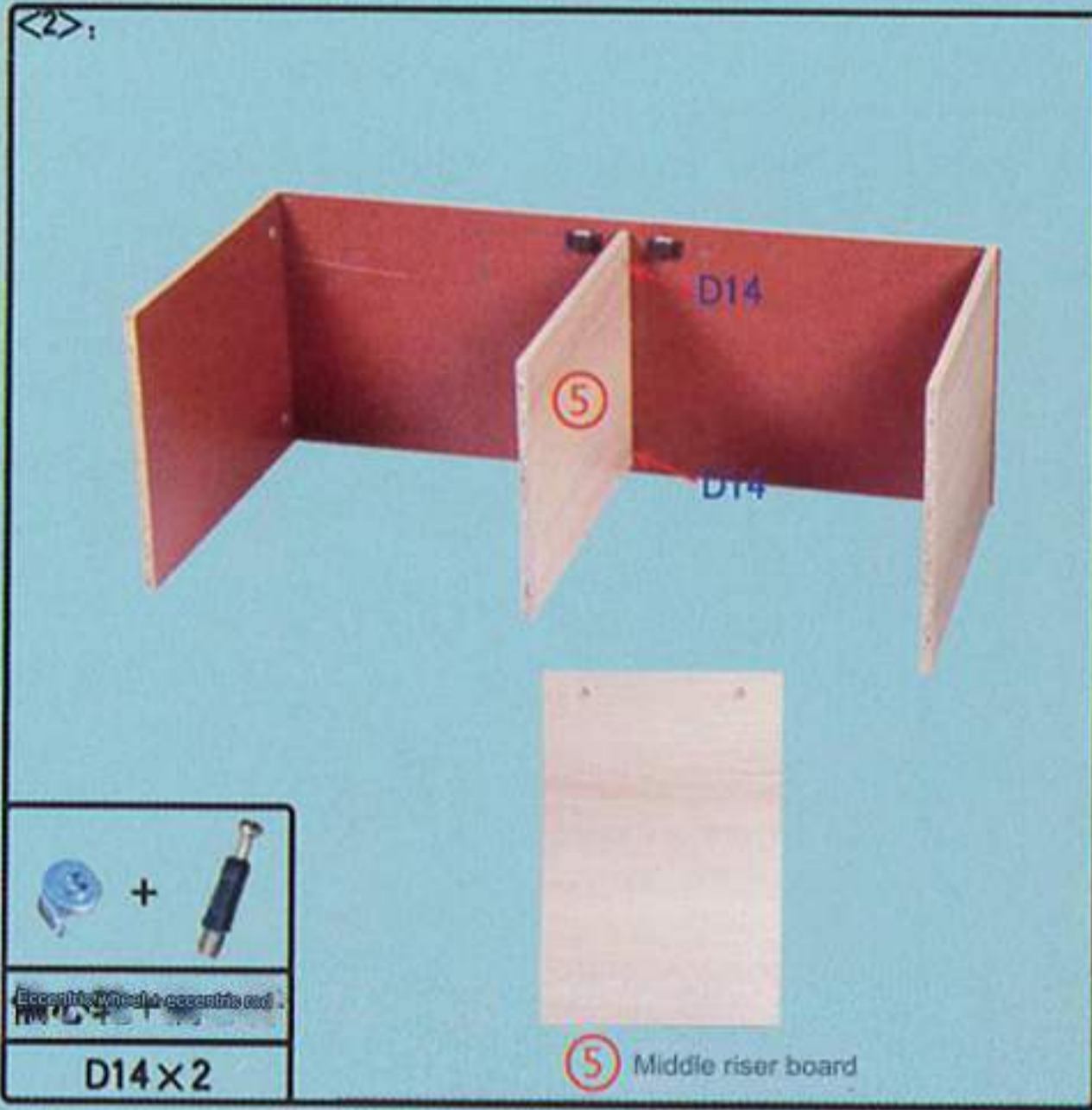
<<1>:

L18 on board No. 2 is up and facing forward.

**2** Door upper panel **4** Left side panel **19** right side panel

Put in D14 (eccentric wheel)  
Turn clockwise again to lock the board

Eccentric wheel + eccentric rod
<b>D14 × 4</b>



Step 3: The overall installation is as follows:

