





BS006 Installation Instruction 60CM

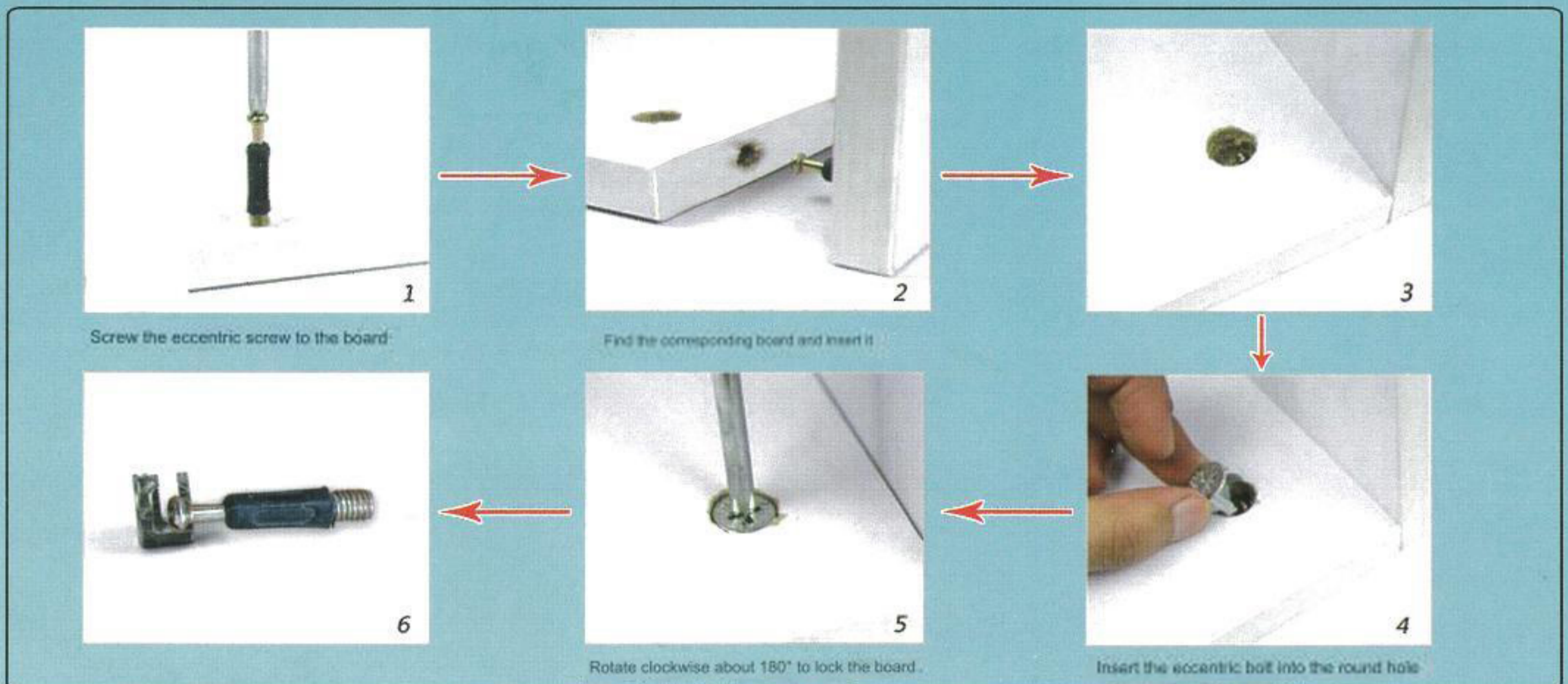
Please be sure to use a manual screwdriver and refrain from using an electric drill.



			
Eccentric screw-	Eccentric bolt	3.5CM self-tapping screws	small nails
A*18	B*18	C*2	D*16

Warmth Tip: Tighten the screws 70% during installation, and then tighten them again after everything is completed!

Installation principle of eccentric parts:



Board name and serial number:

